

**Guide to Equipment and Installation of Event Facilities
(EXPO Hall, EXPO Dome and EXPO Plaza)**

Table of Contents

	Page
Introduction	1
I. Equipment and Installations in Event Facilities	2
1. EXPO Hall	3
2. EXPO Dome	13
3. EXPO Plaza	24
II. Points concerning Use of Event Facilities	41
III. Stage Management and Event Operation Management	45
1. EXPO Hall and EXPO Dome	
2. EXPO Plaza	

Introduction

At the 2005 World Exposition, Aichi Japan (hereinafter “the Exhibition”), various events organized by official participating countries and international organizations (hereinafter “the Official Participants”) are expected to perform the extremely important function of putting into action the EXPO theme (“Nature’s Wisdom”) and project concept, “grand intercultural symphony—the linking of many different cultures and peoples in exchange.”

To help Official Participants hold meaningful and attractive events, the Japan Association for the 2005 World Exposition (hereinafter “Organizer”) will make event facilities within the Exhibition site available free of charge. Of the event facilities within the Exhibition site, this guide covers EXPO Hall, EXPO Dome and EXPO Plaza. This guide outlines equipment and installations available in these event facilities, and points of concern in using such facilities.

Guidelines on use of EXPO Hall, EXPO Dome and EXPO Plaza and the details of equipment and installations available in the event spaces in Global Commons will be announced separately around September 2004.

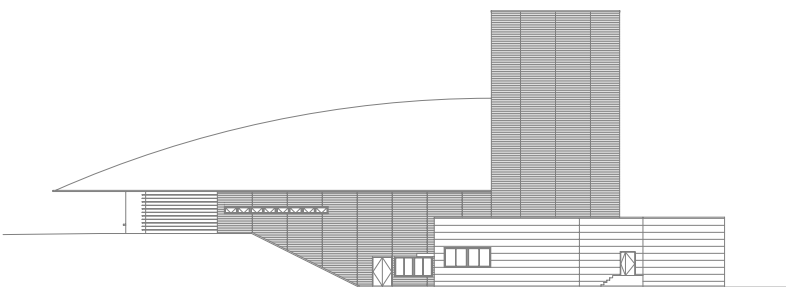
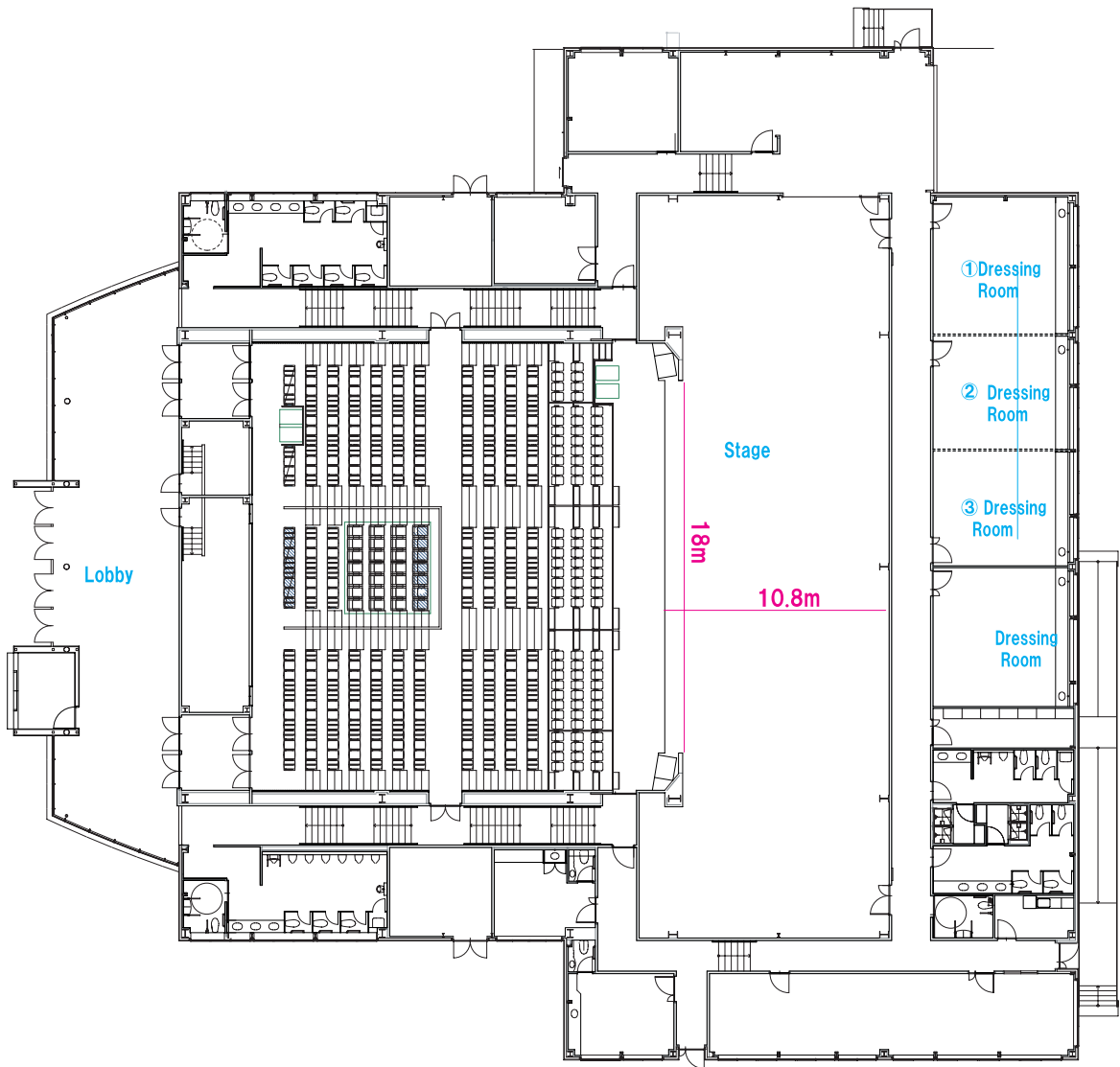
I. Equipment and Installations in Event Facilities

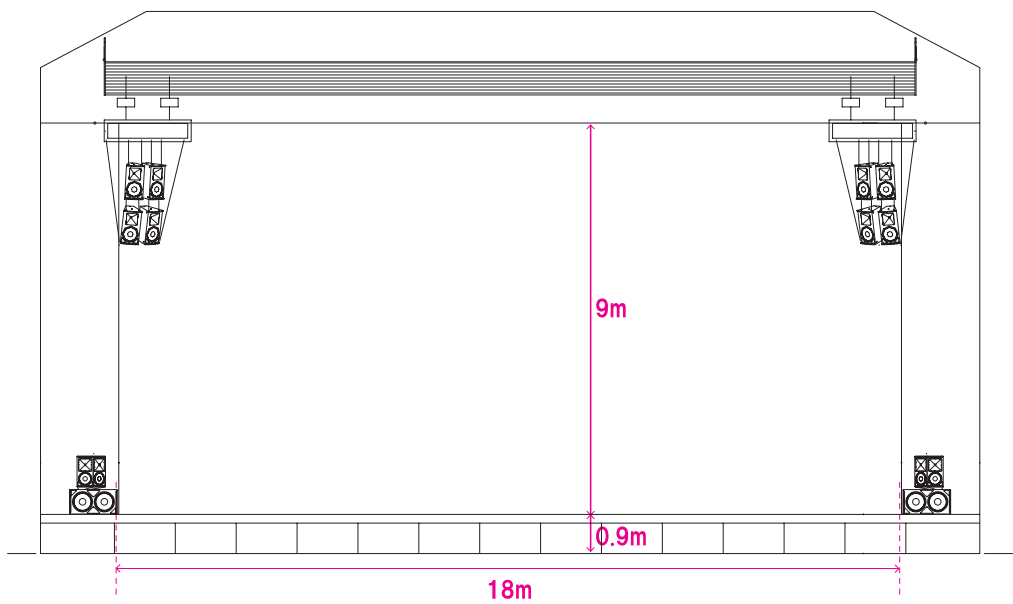
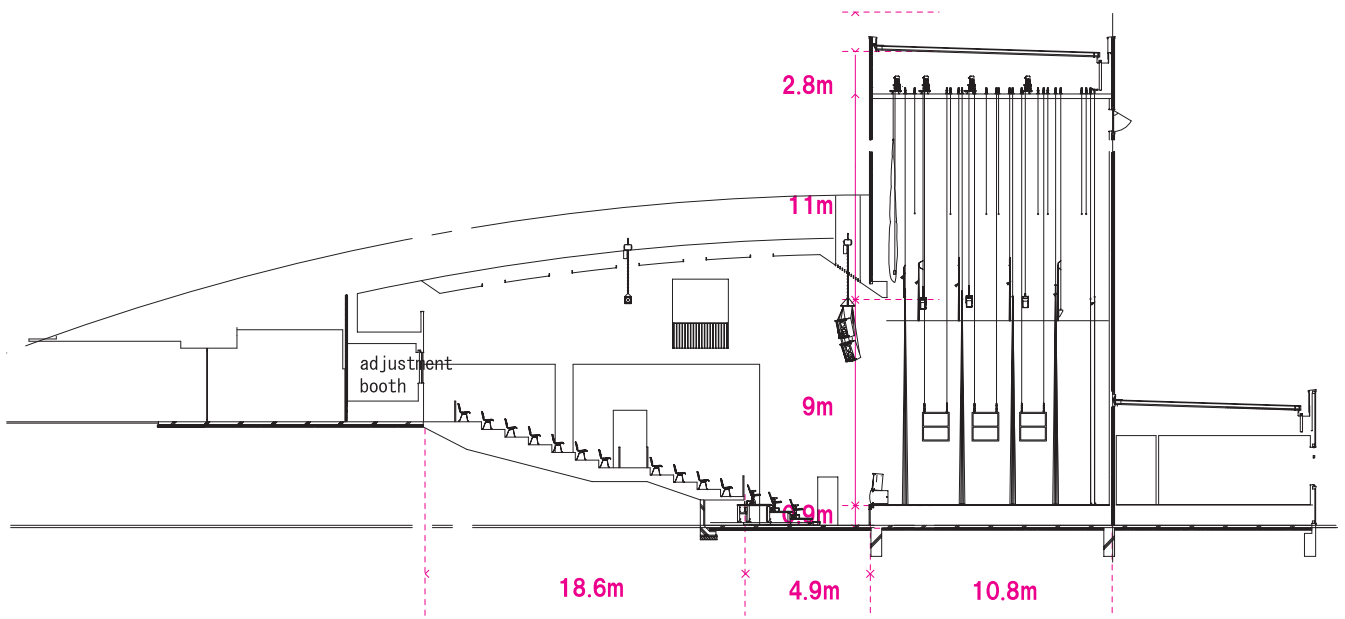
Permanent equipment and installations in EXPO Hall, EXPO Dome and EXPO Plaza will be made available free of charge. Details of equipment and installations are described later in this guide, in the respective sections of the event facilities. Official Participants wishing to use equipment in addition to that available in the event facility shall be responsible for necessary arrangements and expenses.

Facility Outline

Building outline	Building area	2,120.79 m ²
	1 st floor area	1,966.07 m ²
	2 nd floor area	91.08 m ²
	Total floor area	2,057.15 m ²
	Building construction	Steel-frame construction
	Number of floors	B0/2F
	Number of seats	436
	Breakdown: fixed seats (336), movable seats (100), spaces for wheelchairs (4)	
Stage	Stage width	18 m
	Length	10.8 m
	Eave height	9 m
	Stage height	0.9 m
	Sound system	See page 7-8
	Lighting	See page 9
Waiting rooms etc.	Dressing room 1 (* This room can be divided into 3 rooms with an area of: ① 47.6 m ² , ② 49.2 m ² , and ③ 39.2 m ²)	136 m ²
	Dressing room 2	47.6 m ²
	Waiting room for VIP 1	22.8 m ²
	Waiting room for VIP 2	approx. 23 m ²
	Office 1	73 m ²
	Office 2	approx. 23 m ²
	Meeting room	22.5 m ²
	Restrooms (audience area/men)	Urinals: 6, restrooms: 3
	Restrooms (audience area/women)	Restrooms: 7
	Restrooms (backstage/men)	Urinals: 2, restrooms: 2
	Restrooms (backstage/women)	Restrooms: 4
	Shower rooms	2
	Administration office	11 m ²
Parking area	Motor coach	To be determined
	11-t truck (for TV relay work)	To be determined
	4-t trucks (for carrying equipment and materials in and out)	To be determined
	Vans (for technical/operation staff)	To be determined
	Passenger cars (for performers)	To be determined
	VIP	To be determined

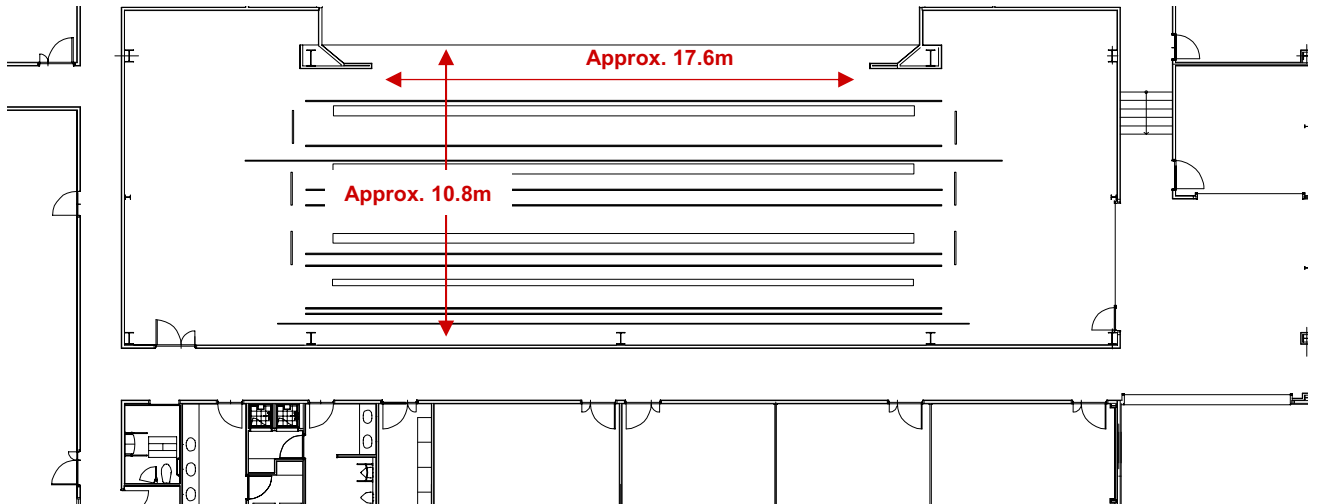
The 2005 World Exposition. Aichi. Japan
EXPO HALL



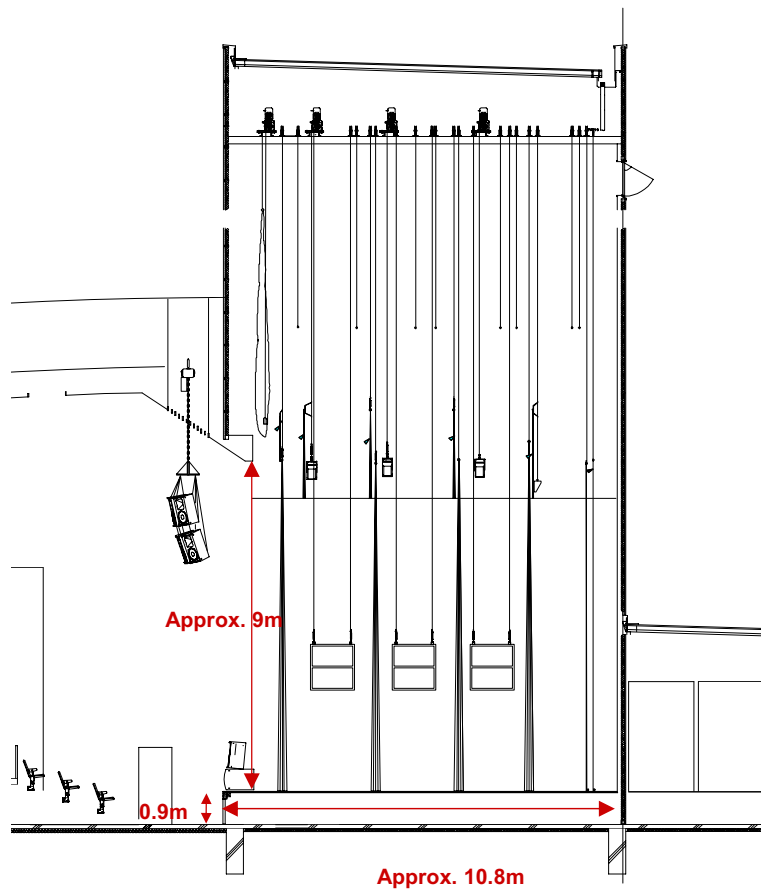


Stage

Floor plan



Side view



1. EXPO Hall

Permanent Equipment and Fixtures

(A) List of permanent audio equipment and specifications [1]

* Equipment planned as of May 25, 2004. These are subject to change.

No	Equipment Name	Specification/ Model No.	Qty.	Unit	Note
01	FOH digital mixing console	YAMAHA	1	set	Including controls, cables, etc.
02	CD player	TASCAM CD450+LA450	2	sets	Including case, cables, etc.
03	MD recorder	TASCAM MD-350	2	sets	Ditto
04	FOH peripheral equipment		1	set	
	(1)Digital processor	YAMAHA	1	unit	
	(2)Network HUB	Cisco Systems WS-C2950G12-E	2	Units	
	(3)Control HUB		1	Unit	
	(4)Media converter		1	Unit	
	(5)Sync. generator	Rosendahl Nanocyncs	1	Unit	
	(6)Word clock distributor	Rosendahl Nanocyncs	1	Unit	
	(7)Power control unit	YST	1	Unit	
05	MONI digital mixing console	YAMAHA	1	Set	Including controls, cables, etc. (left wing)
06	Digital processor rack		1	Set	
	(1)Digital processor	YAMAHA Talisman	2	unit	
	(2)Word clock distributor	Rosendahl Nanocyncs	1	Unit	
	(3)Network HUB	Cisco Systems WS-C2950G12-E	2	Units	
	(4)Control HUB		1	Unit	
	(5)Media converter		1	Unit	
	(6)Power control unit	YST	1	Unit	
07	Power amplifier rack A (FOH side-fill)		1	Set	
	(1) Power amplifier	YAMAHA PC9500N	2	units	
	(2) Power amplifier	YAMAHA PC4800N	8	units	
	(3) Amplifier control unit	YAMAHA ACU16-C	2	units	
08	Power amplifier rack B (general use)		1	set	2-rack set in wing
	(1) Power amplifier	YAMAHA PC3300N	6	units	
09	FOH speaker		2	sets	Stage trusses & stage
	(1) 2 way speaker (15'LF)	JBL AM4215/64	8	units	
	(2) 2 way speaker (12'LF)	JBL AM4212/64	16	units	
	(3) Sub-wooher speaker (18'W)	JBL ASB6128	2	units	

1. EXPO Hall

Permanent Equipment and Fixtures

(A) List of permanent audio equipment and specifications [2]

* Equipment planned as of May 25, 2004. These are subject to change.

No	Equipment Name	Specification/ Model No.	Qty.	Unit	Note
10	Side-fill speaker		2	sets	Stage
	(1) 2 way speaker(15'LF)	JBL AM4215/64	4	units	
11	FB speaker		1	set	Stage
	(1) FB speaker	Turbosound TXD-12M	12	units	
	(2) Powered speaker	MS300	4	units	
12	Control room monitor speaker		1	set	Control room
	(1) Powered speaker	YAMAHA MSP10STUDIO	2	units	
13	Wireless tuner rack		1	set	Mobile equipment
	(1) Wireless tuner	SHURE U4D-ABJ	3	units	
	(2) Antenna distributor	SHURE UA845US	1	unit	
	(3) Antenna booster	SHURE UA830WB	2	units	
14	Wireless microphones		1	set	Mobile equipment
	(1) Wireless microphone (hand-held)	SHURE U2/58-A24	6	units	
	(2) Wireless microphone (belt pack)	SHURE U1-A24+WL51	6	units	
15	Microphones				
	(1) Dynamic microphone 1	SHURE SM58-LCE	15	units	
	(2) Dynamic microphone 2	SHURE SM57-LCE	10	units	
	(3) Condenser microphone 1	AKG C451B	4	units	
	(4) Condenser microphone 2	AKG C414B-ULS	4	units	
16	Microphone stands				
	(1) Floor boom type	K&M ST210/2B	20	units	
	(2) Floor short boom type	K&M ST259B	10	units	
	(3) Floor type	K&M ST200	20	units	
	(4) Tabletop type	SUGI-PRO DS-30M	10	units	
17	Incomes		1	set	
	(1) Master station	Clear-COM MS-440	2	units	
	(2) Remote station with speaker	Clear-COM KB-223	6	units	
	(3) Belt pack station	Clear-COM RS-501	14	units	
	(4) Head set	Clear-COM CC-100	16	units	
18	Others				
	(1) Direct box	BSS AR-133	6	units	
	(2) Headphone	SONY MDR-CD900ST	2	units	

1. EXPO Hall

Permanent Equipment and Fixtures

(B) List of permanent lighting equipment and specifications

* Equipment planned as of May 25, 2004. These are subject to change.

No	Equipment Name	Specification/ Model No.	Qty.	Unit	Note
01	General light control console	Diamond 4	1	unit	Ethernet-ready
02	Ethernet-ready dimmer rack	2 kW - 24 ch	7	units	
03	PAR light	PAR64	156	units	
04	Fresnel lens spot	Marumo Highvex HQE250	54	units	Including barn doors
05	Horizontal light (for upper)	Marumo UCQ-2	64	units	
06	Horizontal light (for lower)	Color kinetics 1800mm	10	units	
07	Xenon pin 2 kW		3	units	
8	Xenon rectifier		1	set	
9	Flat convex lens, spot	Marumo CSQ-1000W	88	units	
10	Signal distributor		4	units	
11	Step-up transformer		18	units	
12	Hanger		1	set	
13	Base		20	units	
14	Stand		20	units	
15	Floor outlet		18	units	Flush-mount
16	Batten for lighting				
	(1) Lighting 1 suspension light	21000mm/48.6mm Φ	1		Hanging load 500kg
	(2) Lighting 2 suspension light	21000mm/48.6mm Φ	1		Hanging load 500kg
	(3) Lighting 3 suspension light	21000mm/48.6mm Φ	1		Hanging load 500kg
	(4) Lighting upper light	21000mm/48.6mm Φ	1		Hanging load 500kg
17	Side ladder				
	(1) Left stage front	W1200mm · H1200mm 48.6mm Φ	1		Hanging load 300kg
	(2) Left stage center	W1200mm · H1200mm 48.6mm Φ	1		Hanging load 300kg
	(3) Left stage back	W1200mm · H1200mm 48.6mm Φ	1		Hanging load 300kg
	(4) Right stage front	W1200mm · H1200mm 48.6mm Φ	1		Hanging load 300kg
	(5) Right stage center	W1200mm · H1200mm 48.6mm Φ	1		Hanging load 300kg
	(6) Right stage back	W1200mm · H1200mm 48.6mm Φ	1		Hanging load 300kg

1. EXPO Hall

Permanent Equipment and Fixtures

(C) List of permanent video equipment and specifications

* Equipment planned as of May 25, 2004. These are subject to change.

No	Equipment Name	Specification/ Model No.	Qty.	Unit	Note
01	Liquid crystal projector		2	units	* One unit for backup
02	RGB matrix switcher		2	units	* One unit for backup
03	RGB seamless switcher		2	units	* One unit for backup
04	Video matrix switcher		1	unit	
05	Multi-converter		3	units	
06	RGB distributor		1	unit	
07	VHS video deck		1	unit	
08	DVD player		1	unit	
09	Hard disk recorder		1	unit	
10	DV-cam player		1	unit	
21	Relaying switcher		1	unit	
12	Digital beta-cam player		1	unit	
13	BS digital tuner		1	unit	
14	Frame synchronizer		1	unit	
15	Above-stage monitor		1	unit	
16	TFT liquid crystal 15' monitor TV		2	units	
17	Video camera		2	units	
18	Camera control unit		2	units	One unit at wing
19	Interchangeable lens 1				
20	Interchangeable lens 2				
21	PC		2	units	For control & others
22	Beta-cam SP recorder for recording		1	unit	
23	DV-cam recorder for recording		1	unit	
24	S-VHS recorder for recording		1	unit	
25	A/D converter for optical transmission system		1	set	
26	PC for controlling RS-422		1	unit	
27	PC for cross point switching		1	unit	
28	LAN-dedicated PC		1	unit	

1. EXPO Hall

Permanent Equipment and Fixtures

(D) List of permanent decor trusses, curtains & fixtures and their specifications [1]

* Equipment planned as of May 25, 2004. These are subject to change.

No	Equipment Name	Specification/ Model No.	Qty.	Unit	Note
01	Décor batten		1	set	
	(1) Décor batten 1	23000mm/ 48.6mm Φ	1		Hanging load 300kg
	(2) Décor batten 2	23000mm/ 48.6mm Φ	1		Hanging load 300kg
	(3) Décor batten 3	23000mm/ 48.6mm Φ	1		Hanging load 300kg
	(4) Décor batten 4	23000mm/ 48.6mm Φ	1		Hanging load 300kg
	(5) Décor batten 5	23000mm/ 48.6mm Φ	1		Hanging load 300kg
	(6) Décor batten 6	23000mm/ 48.6mm Φ	1		Hanging load 300kg
	(7) Décor batten 7	23000mm/ 48.6mm Φ	1		Hanging load 300kg
	(8) Décor batten 8	23000mm/ 48.6mm Φ	1		Hanging load 300kg
02	wooden platform	900 × 1,800 × 120 mm	20	units	
03	900 × 1,800 mm wooden platform wagon		2	units	
04	wooden platform	1,200 × 1,800 × 120 mm	20	units	
05	1,200 × 1,800 mm wooden platform wagon		2	units	
06	wooden platform	600 × 1,800 × 120 mm	16	units	
07	600 × 1,800 mm wooden platform wagon		1	unit	
08	Wooden platform	900 × 900 × 120 mm	2	units	
09	wooden platform	1,200 × 900 × 120 mm	2	units	
10	Box leg	180 × 300 × 510 mm	100	units	
11	Folding support legs	H: 630 × W: 900 mm	10	units	
	Folding support legs	H: 630 × W: 1,200 mm	10	units	
	Folding support legs	H: 840 × W: 900 mm	10	units	
	Folding support legs	H: 840 × W:1,200 mm	10	units	
12	Platform-clamping fitting		100	pieces	
13	Gray riser cloth for raised platform (grommet)	300-30 (overlay) × 2700	6	pieces	
		300-30 (overlay) × 9000	6	pieces	
		600-60 (overlay) × 9000	6	pieces	
14	Stage chair		120	units	
15	Stage chair wagon		4	units	
16	Music stand		70	units	
17	Music stand wagon		3	units	
18	Music stand light		70	units	
19	Storing box wagon for music stand light		1	unit	

1. EXPO Hall

Permanent Equipment and Fixtures

(D) List of permanent decor trusses, curtains & fixtures and their specifications [4]

* Equipment planned as of May 25, 2004. These are subject to change.

No	Equipment Name	Specification/ Model No.	Qty.	Unit	Note
20	Extension code for music stand light				
21	Storing box wagon for extension code		1	unit	
22	Contrabassist chair		12	units	
23	Contrabassist chair wagon		1	unit	
24	Podium		2	units	
25	Music stand for podium		2	units	
26	Wide table on stage	W1,800 × D600 × H700	10	units	
27	White cloth for wide table		10	pieces	
28	Laser pointer		1	unit	
29	Black tray	W550 × D397 × H45	2	pieces	
30	Pitcher		1	unit	
31	Silver tray for pitcher		1	unit	
32	Hand-towel rest		TBD	units	Available
33	Center podium		1	unit	
34	Podium for MC		1	unit	
35	Vase table		1	unit	
36	Tatami mat	Simplified mat	20	pieces	
37	Steps behind platform	900-mm one step	2	units	
	Steps behind platform	900-mm two steps	2	units	

2. Expo Dome

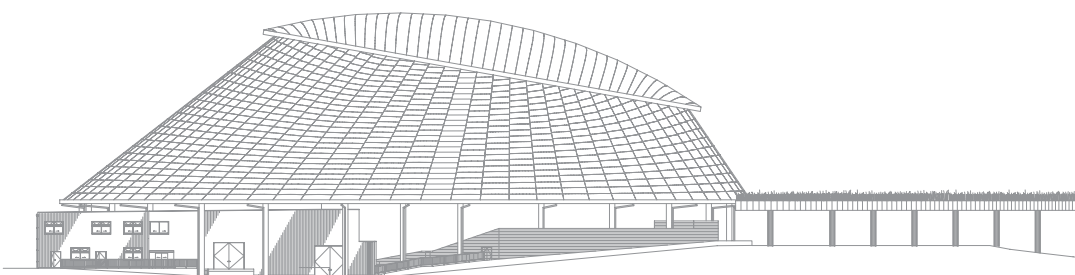
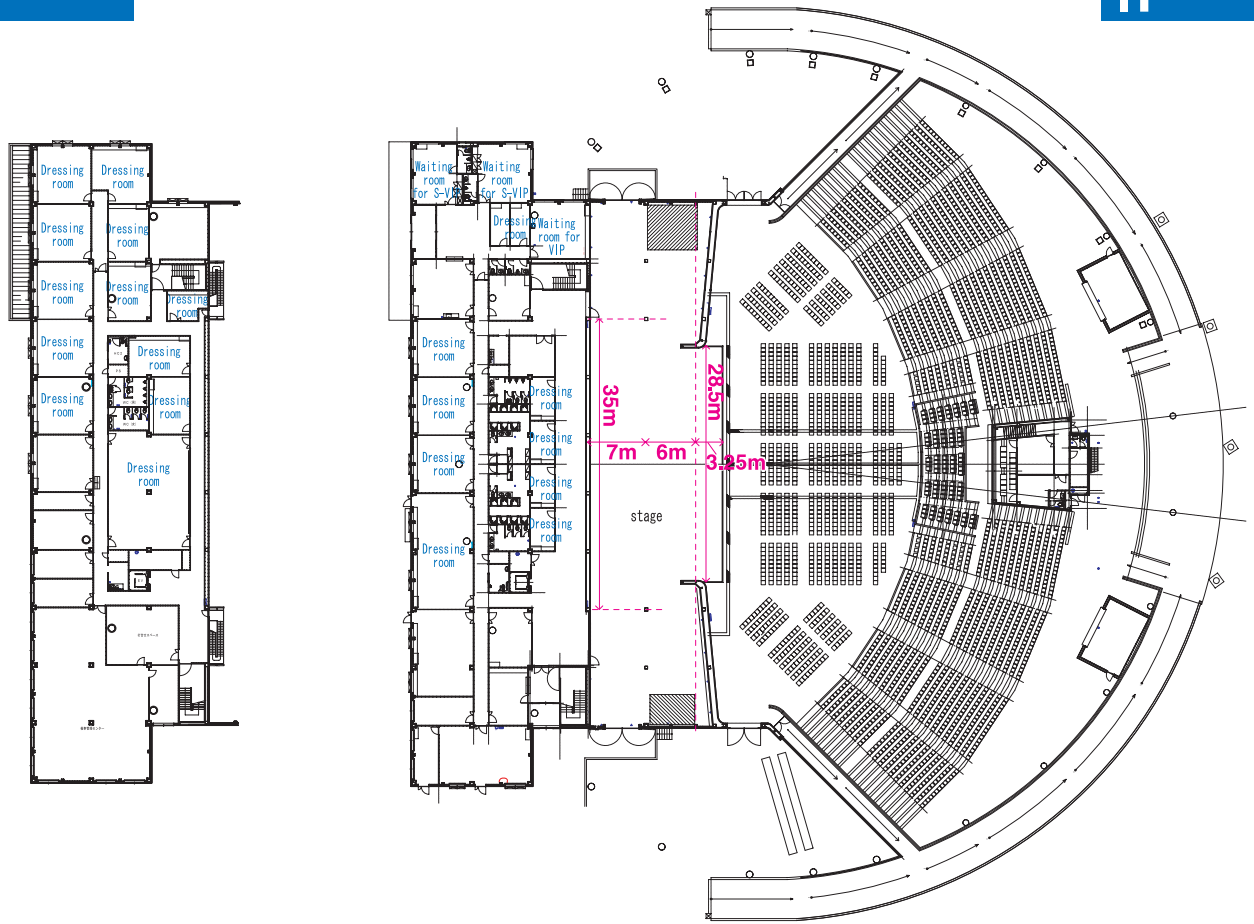
Facility Outline

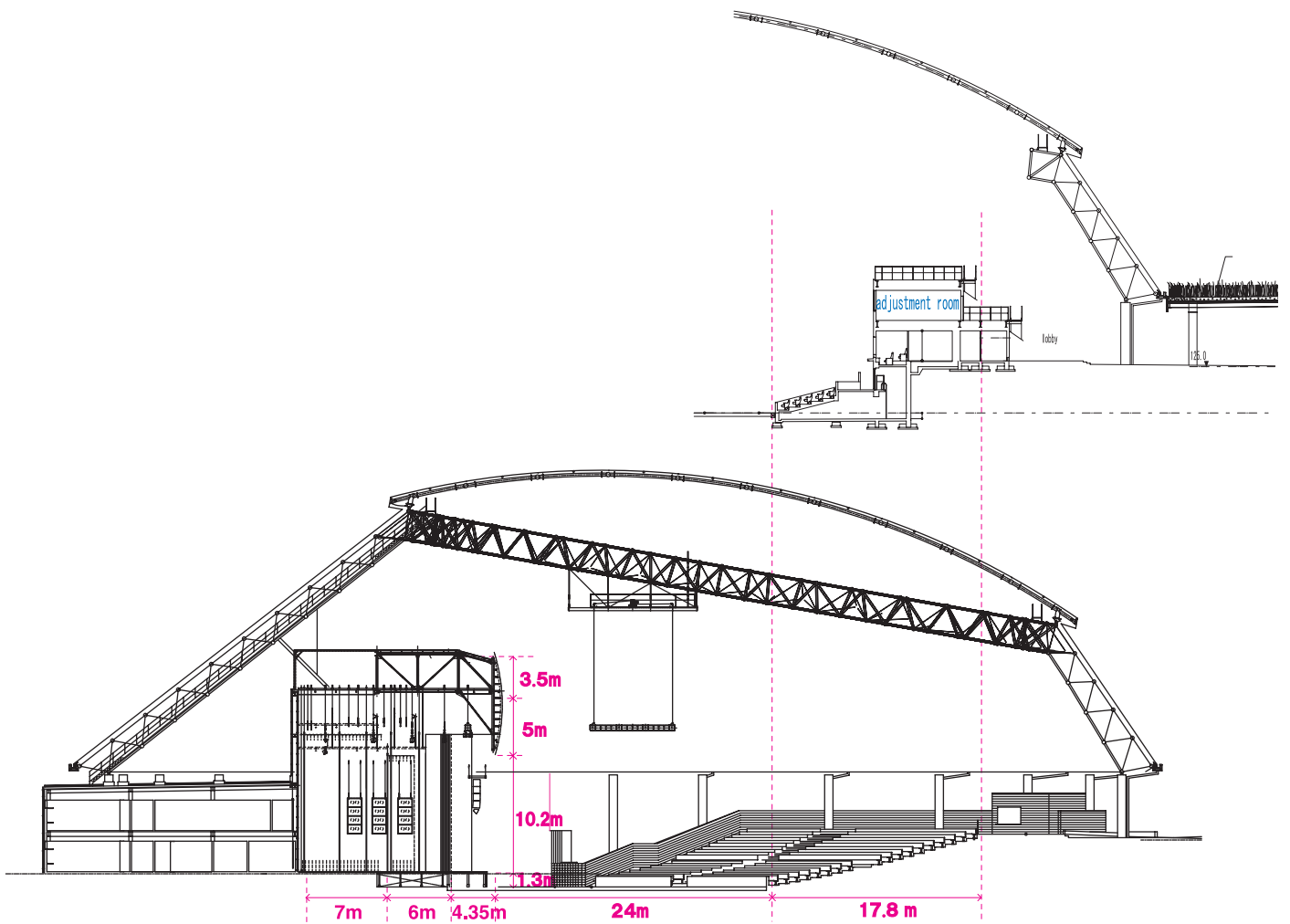
Building outline	Building area		7,991.38 m ²
	Total floor area		8,030.52 m ²
	Building construction		Steel-frame construction
	Number of seats		3,047
	Breakdown: arena seats (1,006), stand seats (1,926), VIP seats (100), VIP/Royal seats (15)		
Stage	Stage width		28.5 m
	Length		16.25m
	Eaves height		10.2m
	Stage height		1.3 m
	Sound system		See page 17-18
	Lighting		See page 19-20
Waiting rooms etc.	1F	Dressing room for performers 1 - 4	23.5 m ²
		Dressing room for performers 6 - 8	27.5 m ²
		Waiting room for Special VIP 1-2	49 m ²
		Waiting room for VIP 1 - 2	12.4 m ²
		Waiting room for VIP 3	49 m ²
		VIP office	49 m ²
	2F	Dressing room for performers 9	17.6 m ²
		Dressing room for performers 10	37.5 m ²
		Dressing room for performers 11	35 m ²
		Dressing room for performers 12 (and Rehearsal room)	196 m ²
		Dressing room for performers 13 -15	49 m ²
		Dressing room for performers 16	35 m ²
		Dressing room for performers 17	49 m ²
		Dressing room for performers 18	35 m ²
		Dressing room for performers 19- 20	49 m ²
		Dressing room for National Day staff	15.4 m ²
		Meeting rooms 1	33.6 m ²
	1F	Restrooms (backstage/men)	Urinals: 4, restrooms: 2
		Restrooms (backstage/women)	Restrooms: 3
		Restrooms (VIP/men)	Urinals: 1, restrooms: 1
		Restrooms (VIP/women)	Restrooms: 1
		Shower room (men)	7 units
		Shower room (women)	7 units
Dressing room (men)		17.5 m ²	
Dressing room (women)		17.5 m ²	
2F	Restrooms (backstage/men)	Urinals: 4, restrooms: 2	
	Restrooms (backstage/women)	Restrooms: 3	
Parking area	Large cars		To be determined
	Passenger cars		To be determined
	Outside broadcast vans		To be determined
	VIP		To be determined



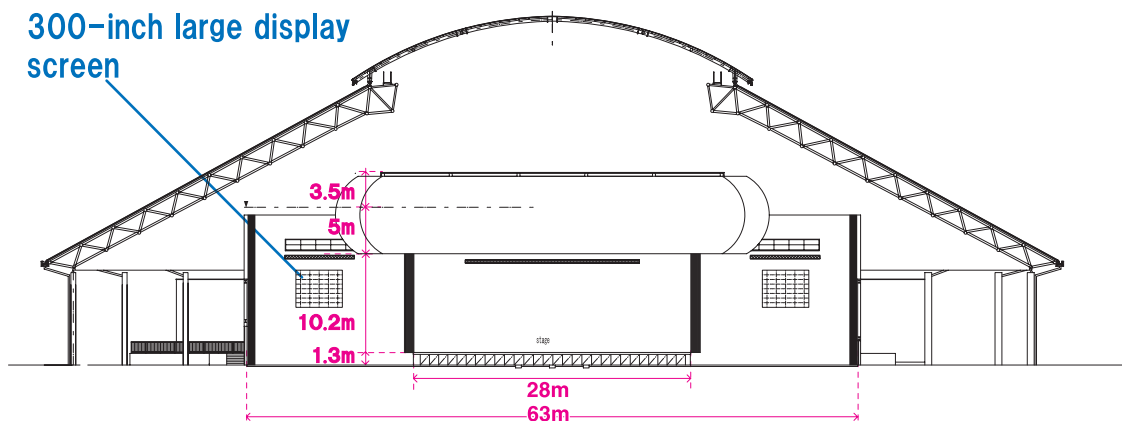
2F

1F



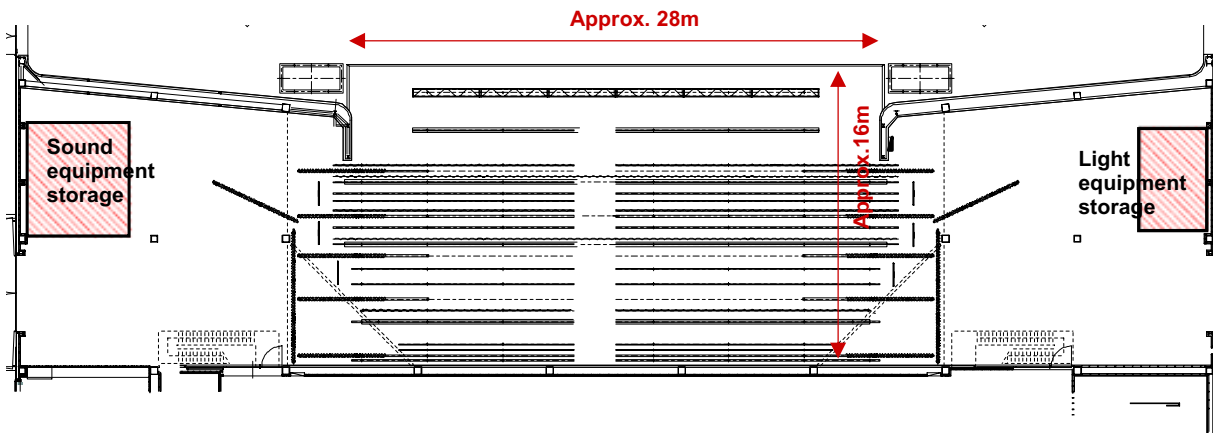


300-inch large display screen

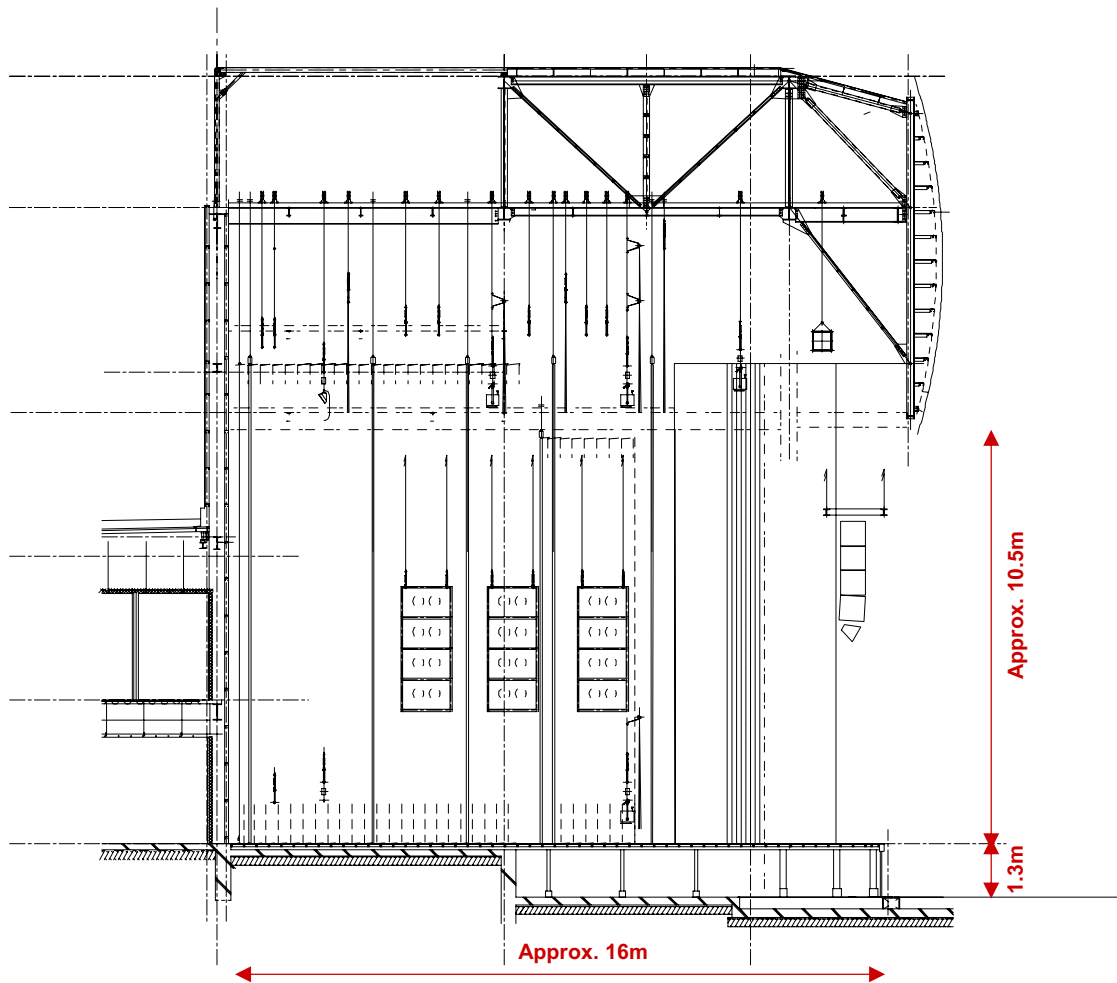


Stage

Floor plan



Side view



2. EXPO Dome

Permanent Equipment and Fixtures

(A) List of permanent audio equipment and specifications [1]

* Equipment planned as of May 25, 2004. These are subject to change.

No	Equipment Name	Specification/ Model No.	Qty.	Unit	Note
01	FOH digital mixing console	YAMAHA PM1D	1	set	Including controls, cables, etc.
02	CD player	TASCAM CD450+ LA450	2	sets	Including case, cables, etc.
03	MD recorder	TASCAM MD-350	2	sets	Ditto
04	Control room peripheral equipment		1	set	See the System Diagram for details
05	MONI digital mixing console	YAMAHA PM1D	1	set	Including controls, cables, etc. (left wing)
06	FOH digital mixing console DSP	YAMAHA DSP1D-EX	1	set	Including peripheral devices, etc. (left wing) See the System Diagram for details.
07	MONI digital mixing console DSP	YAMAHA DSP1D-EX	1	set	Ditto
08	Power amplifier rack A (FOH)		1	set	2-rack set in wing
	(1) Digital TD controller	NEXO NX241	2	units	
	(2) PS15TD controller	NEXO PS15TD MK II	2	units	
	(3) Power amplifier	YAMAHA PC9500N	10	units	
	(4) Amplifier control unit	YAMAHA ACU16-C	2	units	
	(5) Power control unit	YST	2	units	
09	Power amplifier rack B (FOH)		1	set	2-rack set in wing
	(1) Digital TD controller	NEXO NX241	2	units	
	(2) Power amplifier	YAMAHA PC9500N	8	units	
	(3) Power control unit	YST	2	units	
10	Power amplifier rack C (FB_PS15)		1	set	2-rack set in wing
	(1) Digital TD controller	NEXO NX241	2	units	
	(2) PS15TD controller	NEXO PS15TD MK II	4	units	
	(3) Power amplifier	YAMAHA PC9500N	8	units	
	(4) Amplifier control unit	YAMAHA ACU16-C	4	units	
	(5) Power control unit	YST	2	units	
11	Power amplifier rack C (general use)				
	(1) Power amplifier	YAMAHA PC3300N	6	units	
	(2) Power control unit	YST	2	units	
12	FOH speaker		2	sets	Stage trusses & stage
	(1) Mid & high-range cabinet	NEXO α M3-CF	16	units	
	(2) Low-range cabinet	NEXO α B1-CF	16	units	
	(3) Sub-space cabinet	NEXO α S2-CF	8	units	
	(4) Full-range cabinet	NEXO α PS15	6	units	

Permanent Equipment and Fixtures

(A) List of permanent audio equipment and specifications [2]

* Equipment planned as of May 25, 2004. These are subject to change.

No	Equipment Name	Specification/ Model No.	Qty.	Unit	Note
13	Side-fill speaker		2	sets	Stage
	(1) Full-range cabinet	NEXO α EF-C	4	units	
14	FB speaker		1	set	Stage
	(1) FB cabinet	NEXO PS15WEDGE	4	units	
	(2) FB cabinet	NEXO PS15WEDGE/M	4	units	
	(3) 15" speaker	YAMAHA	12	units	
	(4) Powered speaker	YAMAHA MS300	8	units	
15	Control room monitor speaker		1	set	Control room
	(1) Powered speaker	YAMAHA SP10STUDIO	2	units	
16	Wireless tuner rack		1	set	Mobile equipment
	(1) Wireless tuner	SHURE U4D-ABJ	3	units	
	(2) Antenna distributor	SHURE UA845US	1	unit	
	(3) Antenna booster	SHURE UA830WB	2	units	
17	Wireless microphones		1	set	Mobile equipment
	(1) Wireless microphone (hand-held)	SHURE U2/58-A24	6	units	
	(2) Wireless microphone (belt pack)	SHURE U1-A24+WL51	6	units	
18	Microphones				
	(1) Dynamic microphone 1	SHURE SM58-LCE	20	units	
	(2) Dynamic microphone 2	SHURE SM57-LCE	10	units	
	(3) Condenser microphone 1	AKG C451B	6	units	
	(4) Condenser microphone 2	AKG C414B-ULS	6	units	
19	Microphone stands				
	(1) Floor boom type	K&M ST210/2B	30	units	
	(2) Floor short boom type	K&M ST259B	20	units	
	(3) Tabletop type	SUGI-PRO DS-30M	10	units	
20	Incomes		1	set	
	(1) Master station	Clear-COM MS-440	2	units	
	(2) Remote station with speaker	Clear-COM KB-223	6	units	
	(3) Belt pack station	Clear-COM RS-501	14	units	
	(4) Head set	Clear-COM CC-100	16	units	
21	Others				
	(1) Direct box	BSS AR-133	8	units	
	(2) Headphone	SONY MDR-CD900ST	2	units	

Permanent Equipment and Fixtures

(B) List of permanent lighting equipment and specifications [1]

* Equipment planned as of May 25, 2004. These are subject to change.

No	Equipment Name	Specification/ Model No.	Qty.	Unit	Note
01	General DMX light control console	Diamond 4 (Vision)	1	unit	Ethernet-ready
	Backup console for the above	Ditto	1	unit	
02	Moving light control console	Grand MA Full size	1	unit	Ethernet-ready
	Backup console for the above	Ditto	1	unit	
03	Portable dimmer (light controller)	SENSOR portable dimmer 24 ch	14	units	2 kW × 24 CH
04	DMX Ethernet system	Temporary DMX out 48-system	1	unit	Including PC
05	PAR64 (silver)		400	units	
06	Fresnel lens spot	Marumo Highvex HQE250	50	units	Including barn doors
07	Horizontal light (for upper) 300 W		100	units	
08	Horizontal light (for lower)	Color Kinetics 1,800 mm	10	units	
09	Follow pin spot 3,000 W	XENON	4	units	
10	Moving light Wash-type	Studio Color (yolk type)	10	units	
11	Moving light Spot-type	Xspot (yolk type)	10	units	
12	Source Four (426)	ETC Co. Cutter Light	10	units	
13	Source Four (436)	Ditto	10	units	
14	Flat convex lens, spot	Marumo CSQ-1,000 W	30	units	
15	Color Commander		80	units	For background lighting inside stage
16	Power supply unit for the above		6	units	
17	Turbo 700	Metal Halide Lamp 700 W	18	units	Equipment for ceiling
18	Cables				For extension, conversion, branching etc.
19	Color filters		1	set	
20	Rolling tower 8.62 m		2	units	
21	Desk for portable console		2	units	
22	Lighting stand	Folding leg type	20	units	
23	Lighting stand	Base plate type	20	units	
24	Truss for hanging lighting equipment				
	(1) Proscenium truss	22000 mm/ aluminum truss	1	unit	Hanging load 900Kg
	(2) Proscenium light batten	22000 mm/48.6 mm ϕ double batten	1	unit	Hanging load 900Kg
	(3) Lighting SL batten (1)	30000 mm/48.6 mm ϕ double batten	1	unit	Hanging load 900Kg
	(4) Lighting SL batten (2)	30000 mm/48.6 mm ϕ double batten	1	unit	Hanging load 900Kg
	(5) Lighting upper batten	28000 mm/48.6 mm ϕ double batten	1	unit	Hanging load 900Kg

Permanent Equipment and Fixtures

(B) List of permanent lighting equipment and specifications [2]

* Equipment planned as of May 25, 2004. These are subject to change.

No	Equipment Name	Specification/ Model No.	Qty.	Unit	Note
25	Side tower for lighting				
	(1) Left stage (1)	1200 mm/48.6 mm ϕ pipe frame	1	unit	Hanging load 200Kg
	(2) Left stage (2)	1200 mm/48.6 mm ϕ pipe frame	1	unit	Hanging load 200Kg
	(3) Left stage (3)	1200 mm/48.6 mm ϕ pipe frame	1	unit	Hanging load 200Kg
	(4) Right stage (1)	1200 mm/48.6 mm ϕ pipe frame	1	unit	Hanging load 200Kg
	(5) Right stage (2)	1200 mm/48.6 mm ϕ pipe frame	1	unit	Hanging load 200Kg
	(6) Right stage (3)	1200 mm/48.6 mm ϕ pipe frame	1	unit	Hanging load 200Kg

Permanent Equipment and Fixtures

(C) List of permanent video equipment and specifications

* Equipment planned as of May 25, 2004. These are subject to change.

No	Equipment Name	Specification/ Model No.	Qty.	Unit	Note
01	Large LED display		2	units	About 300 inches
02	RGB matrix switcher		2	units	
03	RGB seamless switcher		2	units	
04	Video matrix switcher		1	unit	
05	Multi-converter		6	units	
06	RGB distributor		1	unit	
07	VHS video deck		2	units	
08	DVD player		2	units	
09	Hard disk recorder		2	units	
10	DV-cam player		2	units	
11	Relaying switcher		1	unit	
12	Digital beta-cam player		2	units	
13	BS digital tuner		1	unit	
14	HD-cam player		1	unit	
15	Frame synchronizer		1	unit	
16	Above-stage monitor		2	units	
17	TFT liquid crystal 15' monitor TV		6	units	
18	Video camera		4	units	
19	Camera control unit		4	units	One unit at wing
20	Interchangeable lens 1				
21	Interchangeable lens 2				
22	PC		4	units	For control & others
23	Beta-cam SP recorder for recording		2	units	
24	DV-cam recorder for recording		2	units	
25	S-VHS recorder for recording		2	units	
26	A/D converter for optical transmission system		2	sets	
27	Multi-format converter		2	units	
28	PC for controlling RS-422		1	unit	
29	PC for cross point switching		1	unit	
30	LAN-dedicated PC		1	unit	

2. EXPO Dome

Permanent Equipment and Fixtures

(D) List of permanent decor trusses, curtains & fixtures and their specifications [1]

* Equipment planned as of May 25, 2004. These are subject to change.

No	Equipment Name	Specification/ Model No.	Qty.	Unit	Note
01	Décor batten		7	units	
	①	30000 mm/48.6 mm ϕ double batten	3	units	Hanging load 500Kg
	②	28000 mm/48.6 mm ϕ double batten	2	units	Hanging load 500Kg
	③	23000 mm/48.6 mm ϕ double batten	2	units	Hanging load 500Kg
02	wooden platform	900 × 1,800 × 120 mm	20	units	
03	900 × 1,800 mm wooden platform wagon		2	units	
04	wooden platform	1,200 × 1,800 × 120 mm	20	units	
05	1,200 × 1,800 mm wooden platform wagon		2	units	
06	wooden platform	600 × 1,800 × 120 mm	20	units	
07	600 × 1,800 mm wooden platform wagon		1	unit	
08	Wooden platform	900 × 900 × 120 mm	4	units	
09	wooden platform	1,200 × 900 × 120 mm	4	units	
10	Box leg	180 × 300 × 510 mm	84	units	
11	Folding support legs	H: 630 × W: 900 mm	10	units	
	Folding support legs	H: 630 × W: 1,200 mm	10	units	
	Folding support legs	H: 840 × W: 900 mm	10	units	
	Folding support legs	H: 840 × W:1,200 mm	10	units	
12	Platform-clamping fitting		70	pieces	
13	Gray riser cloth for raised platform (grommet)	300-30 (overlay) × 2700	6	pieces	
		300-30 (overlay) × 9000	6	pieces	
		600-60 (overlay) × 9000	6	pieces	
14	Stage chair		120	units	
15	Stage chair wagon		4	units	
16	Music stand		70	units	
17	Music stand wagon		3	units	
18	Music stand light		70	units	
19	Storing box wagon for music stand light		1	unit	
20	Extension code for music stand light				
21	Storing box wagon for extension code		1	unit	

Permanent Equipment and Fixtures

(D) List of permanent decor trusses, curtains & fixtures and their specifications [3]

* Equipment planned as of May 25, 2004. These are subject to change.

No	Equipment Name	Specification/ Model No.	Qty.	Unit	Note
22	Contrabassist chair		12	units	
23	Contrabassist chair wagon		1	unit	
24	Podium		2	units	
25	Music stand for podium		2	units	
26	Wide table on stage	W 1,800 × D 600 × H 700	10	units	
27	White cloth for wide table		10	pieces	
28	Laser pointer		1	unit	
29	Black tray	W 550 × D 397 × H 45	2	pieces	
30	Pitcher				
31	Silver tray for pitcher				
32	Hand-towel rest				
33	Center podium				
34	Podium for MC				
35	Vase table				
36	Tatami mat	Simplified mat	20	pieces	
37	Steps behind platform	900-mm one step	2	units	
	Steps behind platform	900-mm two steps	2	units	

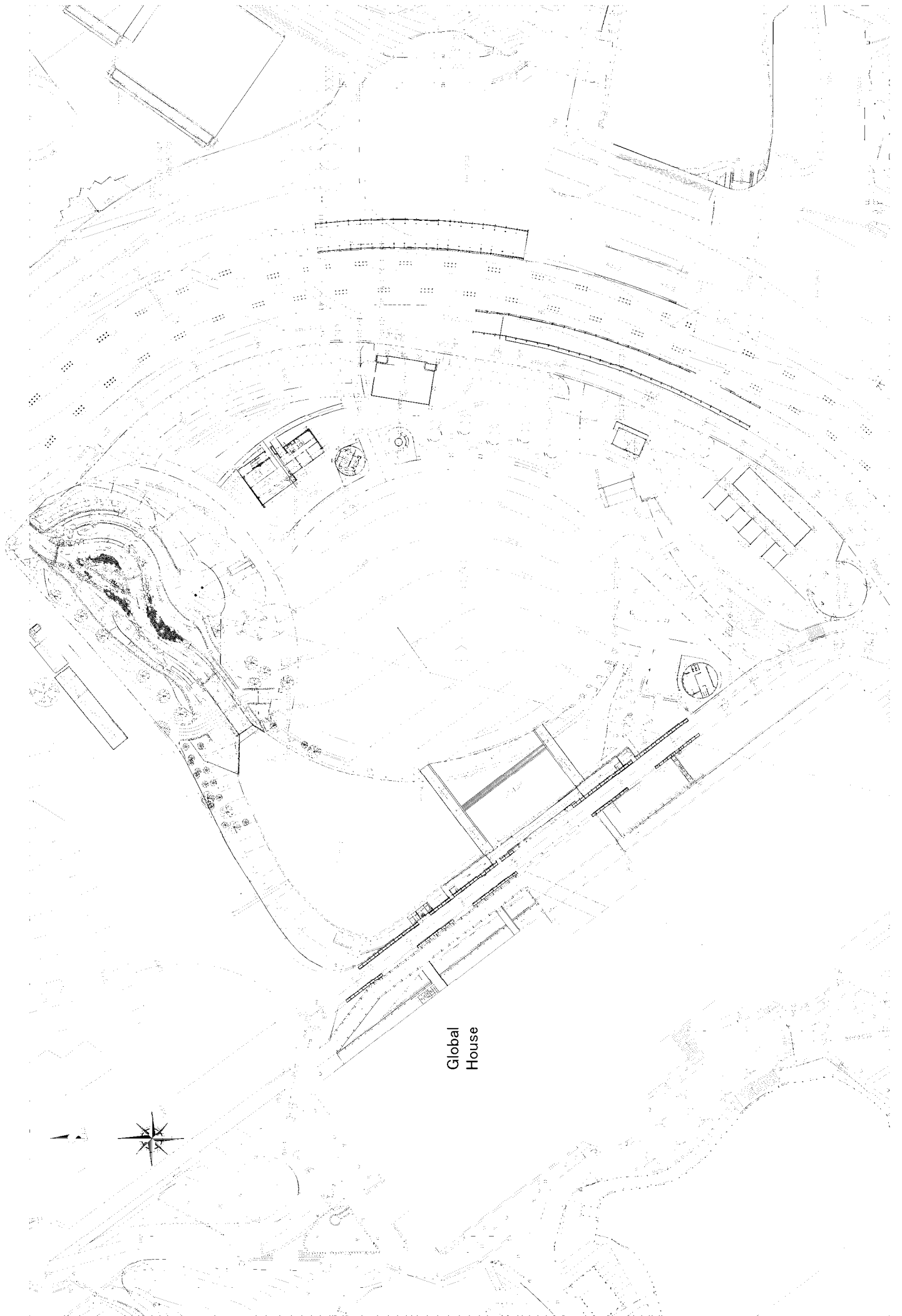
Facility Outline

Plan	Total area of EXPO Plaza		about 10,000 m ²
	Area covered with artificial turf		about 6,300 m ²
	Capacity		5,000 persons
	Capacity of area covered with artificial turf		3,000 persons
Image Display	Name		HD-LBD AstroVision
	Model name		AZ-LE080Z
	Light emission method		R-PG-B light emitting diodes
	Screen size		7,680 mm × 19,968 mm (840 inches)
	Screen area		153.3 m ²
	Aspect ratio		8 : 3
	Dot pitch		8 mm
	Number of dots		980 x 2,496 dots
	Number of scanlines		960 lines
	Brightness adjustment		16 steps
	Display gradation		1,024 shades
	Viewing angle	Horizontal	Right & left: 65° each
		Vertical	Top: 25° Down: 30°
	Input signal		HD-SDI
	Power source		3-phase, 3-wire AC 200V
	Equipment power capacity		260 k VA
Average power consumption		124 kW	
Stage	Stage width		31.5 m
	Length		14.5 m
	Eaves height (until lighting equipment)		12.5 m
	Stage height		0.8 m
Waiting Room 1 (on right-stage side)	Dressing room, meeting room, administrative office, warehouse etc. (To be determined on usage/floor area)		43.5 m ²
	Restroom		1
Waiting Room 2 (on left-stage side)	Dressing room, meeting room, administrative office, warehouse etc. (To be determined on usage/floor area)		48.2 m ²
	Restroom		1
Parking area	11-t truck (for TV relay work)		1
Usage time for events	12:00 - 14:00 (120 minutes) (scheduled)		
	17:00 - 19:00 Organizer's events (scheduled)		
	Details are depending on the schedule that will be organized later.		
Others	Stakes are not allowed to be planted into the artificial turf.		
	Depending on the result of environmental assessment, restrictions can be imposed on the use of the Plaza.		
	It is possible to use an 11-t or smaller truck to carry equipment and materials into the stage.		

3. EXPO Plaza

Artist's rendition





Global
House

List of Constituent Devices of Audio Equipment

3. EXPO Plaza

*Equipment Planned as of May 25, 2004. These are subject to change.

1 Control room

Item	Description/Model	Qty.	Unit	Manufacturer	Note
1 Audio control desk A	Digital set	1	set		
1-1 Control desk	WR-D600	(1)		Matsushita Electric	2*5 unit
1-2 Signal processor rack	64*32*48	(1)		Matsushita Electric	
1-3 Control software	Custom software	(1)		Matsushita Electric	
1-4 CPU control unit for preparation (GUI controlling CPU)		(1)		Matsushita Electric	
2 Optical signal transmitter rack		1	set		
2-1 Monitor amplifier	WP-9150	(1)		Matsushita Electric	
2-2 Optical transmission unit	LW-55	(1)		Otari	
2-3 Controlling PC for the above		(1)		Otari	Including 15" display
2-4 Uninterruptible power supply	SMU-HA152R	(1)		SANKEN Electric	
2-5 Power controlling unit	WU-L67	(1)		Matsushita Electric	
2-6 Housing rack	Special unit	(1)		Matsushita Electric	
3 Peripheral devices wagon		2	unit		
3-1 Cassette tape deck	122MK3	(2)		TASCAM	
3-2 MD recorder	MD-801RMK2	(2)		TASCAM	
3-3 CD recorder	CD-RW750	(1)		TASCAM	
3-4 CD player	CD-450	(1)		TASCAM	
3-5 Digital equalizer	WZ-DE45	(2)		Matsushita Electric	
3-6 Intercom parent unit	MS-232	(1)		CLEARCAM	
3-7 Power distributor	WU-L61	(2)		Matsushita Electric	
3-8 Patch connector unit	Special unit	(3)		Canare Electric	
3-9 Housing wagon	Special type	(2)		ARMOR	
3-10 16ch multi box	16J12F2	1		Canare Electric	For backup circuit
4 Monitor speaker		2	set		
4-1 2-way speaker G	WS-N20	(2)		Matsushita Electric	

List of Constituent Devices of Audio Equipment

3. EXPO Plaza

*Equipment Planned as of May 25, 2004. These are subject to change.

2 Anteroom 2

No.	Item	Description/Model	Qty.	Unit	Manufacturer	Note
5	Stage wing controller rack		1	set		
5-1	Antenna mixer/distributor	WX-R900	(1)		Matsushita Electric	
5-2	Wireless receiver	WX-R821	(3)		Matsushita Electric	
5-3	Optical transmission unit	LW-55	(1)		Otari	
5-4	Patch unit for output & input	Special unit	(1)		Matsushita Electric	
5-5	Power control unit	WU-L67	(1)		Matsushita Electric	
5-6	Housing rack	Special type	(1)		Matsushita Electric	EIA19" 42U
5-7	16ch multi box	16J12F12	(1)		Canare Electric	For backup circuit
6	Digital signal processor rack	Set up in equipment room	1	set		
6-1	Processor unit	Special unit	(2)		Matsushita Electric	
6-2	AD-DA conversion unit	Special unit	(1)		Matsushita Electric	
6-3	Uninterruptible power supply	SMU-HA152R	(2)		SANKEN Electric	
6-4	Power control unit	WU-L67	(1)		Matsushita Electric	
6-5	Housing rack	Special unit	(1)		Matsushita Electric	EIA19" 42U
7	Power amplifier rack		5	unit		
7-1	600W 2ch power amplifier	WP-9600	(26)		Matsushita Electric	
7-2	300W 2ch power amplifier	WP-9300	(12)		Matsushita Electric	
7-3	120W 2ch power amplifier	WP-H062	(1)		Matsushita Electric	
7-4	Digital multi-processor	WZ-DM35	(17)		Matsushita Electric	
7-5	Digital multi-equalizer	WZ-DE45	(4)		Matsushita Electric	
7-6	Power control unit	WU-L67	(18)		Matsushita Electric	
7-7	Housing rack	Special type	(5)		Matsushita Electric	EIA 19" 42U
7-8	16ch multi box	16J12F1	1		Canare Electric	For backup circuit

List of Constituent Devices of Audio Equipment

3. EXPO Plaza

*Equipment Planned as of May 25, 2004. These are subject to change.

3 Stage and Speaker Tower

No.	Item	Description/Model	Qty.	Unit	Manufacturer	Note
8	Connection terminal board					
8-1	Connection terminal board(outlet for audio)	customized	2		Matsushita Electric	stage right & left
9	Main speaker		2	set		
9-1	3-way speaker A	WS-LA1 special type	(16)		Matsushita Electric	8 each for stage right & left
9-2	Sub-woofer	WS-LSB special type	(8)		Matsushita Electric	4 each for stage right & left
10	Side fill monitor		4	set		
10-1	Speaker	WS-P294VD special type	(4)		Matsushita Electric	
10-2	Stationary speaker unit	With casters	(4)		Matsushita Electric	
11	Floor monitor speaker					
11-1	2-way speaker F	WS-A200	8		Matsushita Electric	
11-2	Stand for the above	W2-SS200	4		Matsushita Electric	
12	Backyard speaker					
12-1	Wall type (3W)	WS-2135A	6	unit	Matsushita Electric	
13	Microphone					
13-1	Several types	WM-D150	6		Matsushita Electric	
13-2		WM-D150SW	6		Matsushita Electric	
13-3		WM-C40	2		Matsushita Electric	
14	Wireless microphone device					Receiver is set up in stage wing rack
14-1	Wireless antenna	WX-RB922	4		Matsushita Electric	
14-2	Transmitter	WX-TB815	6		Matsushita Electric	
		WX-TB830	4		Matsushita Electric	
15	Microphone stand					
15-1	On-floor free stop type	WN-5120	6		Matsushita Electric	
15-2	Boom type	WN-5360	6		Matsushita Electric	
15-3	Desktop type	WN-275	4		Matsushita Electric	
15-4	Mini-boom type	WN-5310	4		Matsushita Electric	

List of Constituent Devices of Audio Equipment

3. EXPO Plaza

*Equipment Planned as of May 25, 2004. These are subject to change.

16	Intercom device				
16-1	Belt pack	RS-502	3		CLEARCAM
16-2	Headset	CC-100	4		CLEARCAM
17	Noise microphone		2	set	
17-1	Omnidirectional condenser microphone	WM-C75	(2)		Matsushita Electric

4 Backup Supplies & Accessories

No.	Item	Description/Model	Qty.	Unit	Manufacturer	Note
18	Backup supplies					
18-1	Audio Control Desk B	Digital type	1	unit		
(a)	Control desk	WR-DA7	(1)		Matsushita Electric	
18-2	Main speaker					
(a)	3-way speaker A	WS-LA1 special type	4		Matsushita Electric	
(b)	Sub-woofer	WS-LSB special type	2		Matsushita Electric	
19	Accessories					
19-1	Video patch cord	TBD	1	set		Details are separately shown
19-2	Microphone cable A	EC15	15		CANARE	
19-3	Microphone cable B	EC20	15		CANARE	
19-4	Speaker cable A	SC20-NL	6		CANARE	
19-5	Speaker cable B	SC30-NL	6		CANARE	
19-6	Multi cable	16C30-E3	2		CANARE	
19-7	Multi box	16J12F12	2		CANARE	
19-8	Separate cable	1 male & 1 female	2		CANARE	
19-9	Line transformer box	TFB066-12	2		TOMOKA	
19-10	Headphone	HD-270	2		SENNHEISER	
19-11	Desk chair	SNC-EC01BLN	1		Sanwa Supply	
19-12	Manual for how to operate the equipment	equipment for audio transmission	3	copy	Matsushita Electric	

List of Constituent Equipment of the Image Transmission System

EXPO Plaza

*Equipment Planned as of May 25, 2004. These are subject to change.

1 Live Production Camera System

Item	Model number or Specification	Qty.	Unit	Manufacturer	Note
1 Live Production Large Camera System		1	set		Installed in the controll room
1-1 HD studio camera head	AK-HC980	(1)		Matsushita Electric	
1-2 7" color VF	AK-HVF985	(1)		Matsushita Electric	
1-3 HD 72x zoom lens	MJ72X9.3BISS	(1)		CANON	HD box type
1-4 Intercom headset	HRM-201D	(1)		ASHIDA SOUND	
2 Stage Handy Camera System		2	set		For field operation
2-1 HD Handy camera head	AK-HC930	(2)		Matsushita Electric	
2-2 2" B&W VF	AJ-HVF20	(2)		Matsushita Electric	
2-3 7"LCD color VF	AK-HVF930	(2)		Matsushita Electric	
2-4 HD 21x zoom lens	HJ21eX7.8IASD	(2)		CANON	
2-5 UV filter	UV/105	(2)		CANON	
2-6 Intercom headset	HRM-201D	(2)		ASHIDA SOUND	
2-7 Connection terminal board(outlet for camera)	Custom-made board	2		Matsushita Electric	One each for stage right & left
3 Rooftop Remote Control Camera System		1	set		Set up on the rooftop of the controll room
3-1 HD handy camera head	AK-HC930	(1)		Matsushita Electric	
3-2 HD 21x zoom lens	HJ21eX7.8IASD/U4	(1)		CANON	
3-3 Outdoor remote control camera platform head	HU-4R10	(1)		CANON	
3-4 Outdoor camera housing	CH-4R20	(1)		CANON	
4 Remote-control Closeup Camera System on Stage Wall		1	set		Installed on the wall of the stage
4-1 Multi-purpose camera	AK-HC912	(1)		Matsushita Electric	
4-2 1080i format converter	AK-HFC912	(1)		Matsushita Electric	To be attached to camera
4-3 HD 21x zoom lens	HJ21eX7.8IASD/U4	(1)		CANON	
4-4 Outdoor remote-control camera platform head	HU-4SP10	(1)		CANON	
4-5 Outdoor camera housing	CH-4SP10	(1)		CANON	

List of Constituent Equipment of the Image Transmission System

EXPO Plaza

*Equipment Planned as of May 25, 2004. These are subject to change.

5 VE Desk Equipment (controlling room equipment)						
5-1	Camera control unit	AK-HCU930	4		Matsushita Electric	CCU
5-2	Remote operation panel	AK-HRP930	4		Matsushita Electric	ROP
5-3	VE desk master monitor		1	set		
	a) 20"HDTV color monitor	HTM-2070R	(1)		Ikegami Tsushinki	
5-4	Color picture monitor		5	set		
	a) 10"HDTV color monitor	HTM-1005RA2	(5)		Ikegami Tsushinki	
5-5	HD-SDI wave monitor	WFM700HD-opt.02	1		Tektronix Japan	
5-6	Audio monitor speaker		1	set		
	a) Main unit of monitor speaker	AMS-100	(1)		SONY	
5-7	VE monitor MTX selection panel	An equivalent of AV-RC1110	1		Matsushita/FVA	16-assigned buttons×1BUS
5-8	Intercom selection panel	Custom-made panel (AS-Z8022)	1		Matsushita Electric	Selection of COMM/PRIV
5-9	2ch intercom remote station	RM-220	1		CLEARCAM	
5-10	Gooseneck microphone	GM-18	1		CLEARCAM	
5-11	Headset	CC-26K	1		CLEARCAM	Single-ear open type
5-12	Intercom-camera interface	IF-4B-4	1		CLEARCAM	INC-LINE⇄4W
5-13	Camera platform remote control unit	OP-40AII/HD	2		CANON	
5-14	Camera control unit	ECU-41B (special)	1		CANON	For facial closeup camera
5-15	VE desk	(with pullout operation panel)	3		Matsushita Electric	EIA19" rack H=1,500
5-16	Chair (OA chair)	SNC-ECO1BLN	1		SANWA SUPPLY	
6 Other Camera Accessories						
6-1	Optical camera cable	HDOP03009T1	3		HIRAKAWA HEWTECH	30m for mobile production
6-2	Optical camera cable	HDOP10009T1	2		HIRAKAWA HEWTECH	100m for mobile production
6-3	Small HD gray scale chart	GS-HD S-type (192x108mm)	2		Murakami Color Tech. Inst.	Affixed to vinyl chloride case
6-4	Large HD gray scale chart	GS-HD L-type (512x288mm)	2		Murakami Color Tech. Inst.	Affixed to plywood board

List of Constituent Equipment of the Image Transmission System

EXPO Plaza

*Equipment Planned as of May 25, 2004. These are subject to change.

2 Production-related Equipment for Program Components

Item	Model number or Specification	Qty.	Unit	Manufacturer	Note
1 Recording & Replaying Equipment (VTR)					
1-1 HD-D5 VTR		2	set		
a) VTR main unit	AJ-HD3700B	(2)		Matsushita Electric	
b) HD-SD format converter for the above	AJ-UDC3700AG	(2)		Matsushita Electric	Mounted to the VTR main unit
1-2 HDCAM VTR		1	set		
a) VTR main unit	HDW-M2000	(1)		SONY	
1-3 VTR control circuit changer		1	set		
a) RS-422A changer	SWW-21SP	(3)		SANWA SUPPLY	DB9 2:1changer
1-4 Recording & replaying equipment rack (mini-rack)	(not including caster height), D=810	1		NICCABI	With EIA19"casters
2 3-D Real-time CG System					
2-1 HD-R/T graphics processor	AG-CGP500	1		Matsushita Electric	Main unit of OAG device
2-2 OAG transmission device-controlling WS		1	set		
a) Work station computer	An equivalent of xw8000CT	(1)		HP	Dual Xeon 3.2GHz
b) Graphics engine	FX1100	(1)		Quadro	Installed in W/S
2-3 CG production & transmitting operation unit		1	set		
a) Work station computer	An equivalent of xw8000CT	(1)		HP	Dual Xeon 3.2GHz
b) Graphics engine	FX1100	(1)		Quadro	Installed in W/S
2-4 17" TFT liquid crystal display	An equivalent of LCD-AD173CW	1		IIO-DATA	
2-5 CPU changer	SW-KVM2T	1		SANWA SUPPLY	PS/2 2:1 selection
2-6 OAG real-time software		1	set		
a) Graphics control system	Viz trio-HD	(1)		Vizrt	
b) 3-D character tool	Kaydara-O/L5.0 Panasonic	(1)		Kaydara	
2-7 VW1/2 BUS MTX selection panel	Custom-made panel (AS-Z8021)	1		Matsushita Electric	16 assigned buttons×2BUS
2-8 OAG output preview monitor		1	set		
a) 15"HDTV color monitor	HTM-1505CS2	(1)		Ikegami Tsushinki	
2-9 Intercom belt pack station	RS-501	1		CLEARCAM	
2-10 Headset	CC-26K	1		CLEARCAM	Single ear open type
2-11 Uninterruptible power supply(UPS)	SMU-HA152R	1		SANKEN Electric	1.5kVA rack mount
2-12 Equipment-mounting rack (with EIA 19"casters)	EIA19"*20U D=810	1		Matsushita Electric	
2-13 OAG desk		1	set		
a) Main part of OAG desk (OA desk)	An equivalent of GD-1081K	(1)		SANWA SUPPLY	W=1,000, D=800
b) Chair (OA chair)	SNC-ECO1BLN	(1)		SANWA SUPPLY	

List of Constituent Equipment of the Image Transmission System

EXPO Plaza

*Equipment Planned as of May 25, 2004. These are subject to change.

3 Remote Station Equipment (input & output equipment of remote system/others)

Item	Model number or Specification	Qty.	Unit	Manufacturer	Note
1 Input & output signal interface device					
1-1 Synchronization conversion device		1	set		
a) HD-SDI FS unit	AV-PF10M30	(4)		Matsushita Electric	
1-2 Video format conversion device		1	set		
a) Up-converter HD-SDI sound-multiplex/separation device	AV-UC100	(2)		Matsushita Electric	D1-SDI→HD-SDI
1-3		1	set		
a) HD-SDI A/V-MUX unit	AV-PF10M33	(2)		Matsushita Electric	
b) HD-SDI A/V-DMUX unit	AV-PF10M34	(4)		Matsushita Electric	
2 Interface equipment for IP transmission image display system					
2-1 Network gateway		2	set		
a) Rack mount WS	An equivalent of 322544-291	(2)		HP	ProLiant DL320-G2
b) Hard disk drive for the above	An equivalent of 230534-B21	(2)		HP	40GB-HDD
c) MPEG-TS I/O card	An equivalent of CX-565-MUX-ASI	(2)		ASTRODESIGN	Inserted in WS slot
d) G/W system software	Custom application software	(2)		Matsushita Electric	
2-2 HDTV MPEG-DECODER	An equivalent of DM-D4600	1		JVC	
2-3 HDTV MPEG-DECODER	An equivalent of MV-400	1		JVC	
2-4 Monitor/keyboard changer		1	set		
a) CPU changer	PShare EX	(1)		Plat'Home	PS/2;4:1 selection

List of Constituent Equipment of the Image Transmission System

EXPO Plaza

*Equipment Planned as of May 25, 2004. These are subject to change.

3 Large image display board equipment(Constituent equipment is included in the large image display board equipment.)					
Operation unit for large image display board		1	set		
3-1 a) Desktop personal computer	An equivalent of d530MT	(1)		HP	
3-2 Screen operation panel	TBD (AZ_****)	(2)		Matsushita Electric	SOP
4 Remote station equipment for signals to & from composite terminal board inside relay mobile (provided separately)					Installation space to be provided
5 Remote station equipment for signals to & from equipment in major event venue (provided separately)					Installation space to be provided
6 Peripheral system equipment in remote station desk					
6-1 Video jack board (VJ)	An equivalent of 261U-DVJW-HDG	1		CANARE	
6-2 Uninterruptible power supply	SMU-HA152R	1		SANKEN Electric	1.5kVA rack mount
6-3 Equipment-housing rack (remote station rack 1 & 2)	EIA19"43U W=570, H=2,100,D=800	2		Matsushita Electric	

List of Constituent Equipment of the Image Transmission System

EXPO Plaza

*Equipment Planned as of May 25, 2004. These are subject to change.

4 Video racks 1 to 4

Item	Model number or Specification	Qty.	Unit	Manufacturer	Note
1 Synchronizing signal equipment					
1-1 Synchronizing signal generator		2	set		
a) HDTV-SG main frame	TG700	(2)		Tektronix Japan	
b) HDTV-SG module	HDVG7-BK	(2)		Tektronix Japan	With SDI-BLACK
c) BB-GEN module	BG7	(2)		Tektronix Japan	
d) GEN-LOCK module	AGL7	(2)		Tektronix Japan	
1-2 Changeover unit	ECO422D	1		Tektronix Japan	
1-3 Synchronizing signal distributor		1	set		
a) HD-SDI DA unit	AV-PF10M36	(2)		Matsushita Electric	
b) VDA unit	AV-VD01	(8)		Matsushita Electric	
2 Video Audio Input & Output Distribution/Signal Interface Equipment					
2-1 Video input distribution, I/F equipment		1	set		
a) HD-SDI DA unit	AV-PF10M36	(16)		Matsushita Electric	SDI distribution unit
a) HD-SDI A/V-MUX unit	AV-PF10M33	(6)		Matsushita Electric	Sound-multiplex unit
2-2 AES/EBU digital audio distributor		1	set		
a) VDA unit	AV-VD01	(2)		Matsushita Electric	For AES/EBU distribution
2-3 Video output distribution, I/F equipment		1	set		
a) HD-SDI DA unit	AV-PF10M36	(2)		Matsushita Electric	SDI distribution unit
b) HD-SDI AVDL unit	AV-PF10M35	(11)		Matsushita Electric	Automatic phase adjustment unit
c) HD-SDI A/V-DMUX unit	AV-PF10M34	(4)		Matsushita Electric	Audio signal separation unit
3 HD TV digital video switcher system					
3-1 Digital video switcher	AV-HS100	1		Matsushita Electric	Main unit of video switcher
4 HD-SDI routing switcher system					
4-1 HD-SDI matrix switcher	DSR8700-40*24	1		Matsushita/FVA	
4-2 MTX X-Y selecting operation panel (full bus local selection panel)	An equivalent of AV-RC1140	1		Matsushita Electric	16 assigned buttons×2 X-Y selecting operation panel

List of Constituent Equipment of the Image Transmission System

EXPO Plaza

*Equipment Planned as of May 25, 2004. These are subject to change.

5 OA tally system						
5-1	Tally process & relay device	Custom-made device (AV-Z8019)	1		Matsushita/FVA	
6 Video Server System						
6-1	MSS900 dual server system		2	set		
	a) Main unit of video server	MSS900si-8 server	(2)		PINNACLE	
	b) 960GB storage array	Palladium 1000/960GB	(2)		PINNACLE	120GB-HDD(8+2P)
	c) MSI-PC		(2)		PINNACLE	
6-2	HD-SDI real-time encoder	E5780	2		TANDBERG	
6-3	Uninterruptible power supply(UPS)	SMU-HA302R	2		SANKEN Electric	3kVA rack mount
6-4	Network equipment		2	set		
	a) Switching hub	FS708XL	(2)		Allied Telesis	100BASE-T
7 Standard clock equipment						
7-1	Master clock equipment	TDC-100	1		SEIKO	Time Data Clock
7-2	RS-2332C distributor	Custom-made unit (AS-Z8018)	1		Matsushita/FVA	
8 APC Control Equipment						
8-1	APC data processor		1	set		APC-DP
	a) Rack mount WS	An equivalent of 349201-291	(1)		HP	ProLiant DL380 G3
	b) Hard disk drive	An equivalent of 286714-B22	(2)		HP	72.8GB HDD
	c) Redundant power unit	An equivalent of 313054-001	(1)		HP	Redundant power
	d) Windows2000 Server O/S	C11-02912	(1)		Microsoft	With 5 clients
	e) APS-DP application software	Custom application software	(1)		Matsushita Electric	
8-2	APC-Real Time Controller		1	set		APC-RTC
	a) System controller	AV-SA2000	(1)		Matsushita Electric	
8-3	Uninterruptible Power Supply(UPS)	SMU-HA152R	1		SANKEN Electric	1.5kVA rack-mounted
8-4	Network equipment		2	set		
	a) Switching hub	FS708XL	(2)		Allied Telesis	100BASE-T
9 System Peripheral Equipment in Video Equipment Rack						
9-1	Video jack board (VJ)	An equivalent of 261U-DVJW-HDG	6		CANARE	
9-2	Equipment-housing racks (video racks 1 to 4)	EIA19**43U W=570,H=2,100,D=800	4		Matsushita Electric	

List of Constituent Equipment of the Image Transmission System

EXPO Plaza

*Equipment Planned as of May 25, 2004. These are subject to change.

5 Operation desk

Item	Model number or Specification	Qty.	Unit	Manufacturer	Note
1 Video Operation Desk (TD desk)					
1-1 Video switcher operation panel VF-RET1/2, SEL1/2 BUS MTX	AV-HS100	1		Matsushita Electric	Operation panel unit
1-2 selecting operation panel	Custom-made panel (AS-Z8020)	1		Matsushita/FVA	16 assigned buttons ×2 4BUS control
1-3 Intercom equipment		1	set		
a) 2ch intercom remote station	RM-220	(1)		CLEARCAM	
b) Gooseneck microphone	GM-18	(1)		CLEARCAM	
c) Headset	CC-26K	(1)		CLEARCAM	Single-ear open type
1-4 Operation desk		1	set		
a) Desk (OA desk)	An equivalent of GD-881K	(1)		SANWA SUPPLY	W=800, D=800
b) Equipment-housing rack mount box for the above	Custom-made desktop mount box	(1)		Matsushita Electric	
c) Chair (OA chair)	SNC-ECO1BLN	(1)		SANWA SUPPLY	
2 PD/Transmission Desk					
2-1 Large image transmission 1/2BUS MTX selecting operation panel	Custom-made panel (AS-Z8021)	1		Matsushita/FVA	16 assigned buttons×2 4BUS
2-2 APC scheduling terminal unit		1	set		
a) Terminal unit (PC)	An equivalent of d330SF	(1)		HP	
b) Additional memory	256MB SDRAM kit	(1)		HP	Installed in PC
c) APC terminal unit application software	Custom application software	(1)		Matsushita Electric	
d) 19" TFT liquid crystal display	An equivalent of LCD-AD192CWH	(1)		IIO-DATA	SXGA display
e) Uninterruptible power supply	SMU-HA751	(1)		SANKEN Electric	750VA stationary type
2-3 Editing control device	AJ-A900	1		Matsushita Electric	
2-4 Intercom equipment		1	set		
a) 2ch intercom remote station	RM-220	(1)		CLEARCAM	For PD
b) Gooseneck microphone	GM-18	(1)		CLEARCAM	
c) Belt pack station	RS-501	(1)		CLEARCAM	For AD
d) Headset	CC-26K	(2)		CLEARCAM	Single-ear open type
2-5 Operation desk		1	set		
a) Desk (OA desk)	An equivalent of GD-1281K	(1)		SANWA SUPPLY	W=1,200 , D=800
b) Equipment-housing rack mount box for the above	Custom-made mount box	(1)		Matsushita Electric	
c) Chair (OA chair)	SNC-ECO1BLN	(2)		SANWA SUPPLY	

List of Constituent Equipment of the Image Transmission System

EXPO Plaza

*Equipment Planned as of May 25, 2004. These are subject to change.

3 APC Scheduling Desk					
3-1	APC scheduling terminal unit		1	set	
	a) Terminal unit	An equivalent of d330SF	(1)		HP
	b) Additional memory	256MB SDRAM kit	(1)		HP
	APC terminal unit application	Custom application software	(1)		Matsushita Electric
	c) software				
	d) 19" TFT liquid crystal display	An equivalent of LCD-AD192CWH	(1)		IIO-DATA
	e) Uninterruptible power supply	SMU-HA751	(1)		SANKEN Electric
					750VA stationary type
3-2	Network printer		1	set	
	a) Laser shot printer unit	An equivalent of LP-7900	(1)		EPSON
	b) Network card (LAN card)	PRIFNW3S	(1)		EPSON
	c) Universal cassette unit	LUP3UC1	(1)		EPSON
					Installed in printer unit Inserted in printer for 250, A3-size sheets
3-3	Cabinet for printer	LPCBN4	1		EPSON
3-4	Operation desk		1	set	
	a) Desk (OA desk)	An equivalent of GD-1281K	(1)		SANWA SUPPLY
	b) Chair (OA chair)	SNC-ECO1BLN	(1)		SANWA SUPPLY
					W=1,200 , D=800
4 Video server operation desk (program component recording/backing-up operation terminal)					
4-1	Video server recording terminal		2	set	
	a) Terminal unit	An equivalent of d330SF	(2)		HP
	b) 2ch-SIO card (RS-422A)	An equivalent of DSC-200/300	(2)		Quatech
	Video server terminal application	Custom application software	(2)		Matsushita Electric
	c) software				
	d) 17" TFT liquid crystal display	An equivalent of LCD-AD173CW	(2)		IIO-DATA
	e) Uninterruptible power supply(UPS)	SMU-HA751	(2)		SANKEN Electric
					750VA stationary type
4-2	Transmitted image preview monitor		2	set	
	a) 15"HDTV color monitor	HTM-1505CS2	(2)		Ikegami Tsushinki
4-3	Operation desk		1	set	
	a) Desk (OA desk)	An equivalent of GD-1081K	(1)		SANWA SUPPLY
	b) Chair (OA chair)	SNC-ECO1BLN	(1)		SANWA SUPPLY
					W=1,000, D=800

List of Constituent Equipment of the Image Transmission System

EXPO Plaza

*Equipment Planned as of May 25, 2004. These are subject to change.

6 Image monitoring equipment

Item	Model number or Specification	Qty.	Unit	Manufacturer	Note
1 Device for combining 16 segmented video images					Installed in video racks 1& 2
1-1 Device for segmenting images into 16 screen divisions	HS-7041HD	2		ASTRODESIGN	
1-2 HD-SDI DA converter	DA-1643A	2		ASTRODESIGN	
2 Suspended PDP monitor					
2-1 42"PDP monitor	TH-42PHD6	2		Matsushita Electric	
3 Audio desk monitor equipment					
3-1 Audio desk monitor equipment		2	set		
a) 17" multi-format monitor	An equivalent of BT-H1700A	(2)		Matsushita Electric	
3-2 Monitor wagon	An equivalent of LTV-110	2		AURORA	

7 Backup Supplies & Accessories

Item	Model number or Specification	Qty.	Unit	Manufacturer	Note
1 Accessories					
1-1 Video patch cord	TBD	1	set		Details are separately presented
1-2 Transfer/terminal jack	TBD	1	set		Details are separately presented
1-3 Manual for how to operate the equipment	and transmission of visual image	3	copy	Matsushita Electric	

II. Points concerning Use of Event Facilities

In using event facilities, you are requested to pay attention to the matters described below.

Please note that EXPO Plaza is a project operated jointly by the Organizer and sponsors. In planning events to be held in EXPO Plaza, due consideration must be given to the themes and concepts established by the two parties. EXPO Plaza will be made available for events organized by the Official Participants only when there is no showing on the large display screen installed in the Plaza. There are more restrictions on use of EXPO Plaza, in terms of time and work operation, than on other event spaces, including EXPO Hall and EXPO Dome. For details, refer to the Guidelines on Use of EXPO Plaza for Events, which will be sent to you at a later date.

(1) Carrying into and out of, and access to, Exhibition site

For access to the Exhibition site when carrying equipment and materials into or out of the site or for other purposes, Accreditation Pass and/or Vehicle Pass issued by the Organizer will be required. Information on these passes, including application procedures and issuance process, refer to *GL13-1 Guidelines concerning the Handling of Accreditation and Vehicle Passes*, to be published separately.

(2) Installation and arrangement (EXPO Plaza)

As for EXPO Plaza, there are designated time blocks when the Plaza is available for special events (12:00 – 14:00). During the remainder of EXPO opening hours, video shows will be presented on the large display screen. For this reason, installations or arrangements that may hinder these showings will not be allowed. Official Participants must consult the Organizer in advance regarding the heights and locations of their installations. Users must also pay attention to installation safety measure against rain and weather, not to mention earthquake, in due consultation with the Organizer regarding installation methods, special treatment of materials and other necessary works.

(3) Rehearsal

1) Time restriction

EXPO Hall

There is no time restriction on rehearsals, as a rule.

However, the hall will become available after removal of a previous event. In performing works outside the hall in connection with carrying equipment and materials in or out, and preparations in the nighttime (22:00 - 7:00), special care should be taken so as not to make loud noises outside the hall.

Users will be required to communicate the carrying-in/out time in advance.

EXPO Dome

Official Participants will be allowed to conduct rehearsals using audio equipment from 7:00 to 22:00, in principle.

However, the dome will become available after removal of a previous event.

If, due to unavoidable circumstances, an Official Participant needs to conduct a rehearsal sometime between 22:00 and 7:00, the Organizer will discuss it with the Official Participant (rehearsal time, loudness level etc.) and make a decision. Stage lighting rehearsals may be conducted at night, in principle. Special care should be taken not to let light out of the dome.

There is no time restriction in carrying in and out or preparations, as a rule.

However, Official Participants will be required to serve advance notice of the carrying-in/out time. From 22:00 to 7:00, special care should be taken to prevent the escape of loud noises from the dome.

The above guidelines also apply to rehearsals conducted using special effects in the nighttime (22:00 – 7:00). Official Participants are expected to follow the policy of environmental consideration, in terms of light and sound.

EXPO Plaza

There will be some restrictions due to environmental considerations at certain times of day (particularly, late night and early morning). For details, refer to the Guidelines on Use of EXPO Plaza for Events, which will be sent to you at a later date.

If, through unavoidable circumstances, an Official Participant must conduct a rehearsal sometime during the above hours, the Organizer will discuss with the Official Participant (rehearsal time, loudness level etc.) and make a decision.

There is no time restriction in carrying in and out or preparations, as a rule.

Note, however, that carrying in or out by vehicle will not be permitted during, and 30 minutes before and after, EXPO opening hours.

2) Restriction of audience admission

EXPO Hall

When rehearsing during EXPO open hours, it is possible to restrict visitor admission to the hall. When a rehearsal is open to visitors, attention should be paid to audience safety. The Official Participant and Organizer shall decide the specifics of each rehearsal through discussion.

EXPO Dome

When rehearsing during EXPO opening hours, visitor admission to the dome can be restricted. It should be noted, however, that it is impossible to completely close a rehearsal, since the dome is a semi-outdoor facility. When a rehearsal is made open to visitors, attention should be paid to audience safety.

The Official Participant and Organizer shall decide the specifics of each rehearsal through discussion.

EXPO Plaza

It is not possible to conduct a closed rehearsal, since EXPO Plaza is an open-air facility. When rehearsing, attention should be paid to audience safety. The Official Participant and Organizer shall decide the specifics of each rehearsal through discussion.

- (4) Use of inflammables, transportation of dangerous objects
It is necessary to apply for a permit in advance through prescribed procedures.
Use of smoke machines also requires a prior permit through prescribed procedures.
For details, please consult with the Organizer.
- (5) Use of balloons, laser and other special effects equipment
 - 1) Use of balloons
Distribution of balloons to visitors is prohibited. (EXPO Hall and EXPO Dome)
Use of helium or hydrogen gas is prohibited, even if necessary for your stage presentation.
 - 2) Use of lasers
Consult the Organizer in advance.
 - 3) Other
For use of carbon dioxide or dry ice machines, consult the Organizer in advance.
- (6) Clean-up and waste
Official Participants must carry out all tools and equipment brought in by them, and the materials and waste generated by their events.
- (7) Photography and sound and video recording by visitors
It is within the discretion of Official Participants to permit or prohibit visitor photographing, or sound or video recordings of the events.
In the case of prohibition, Official Participants shall be responsible for the security check and temporary custody of equipment brought in by visitors.
* Please note that the Organizer may take pictures, or make sound or video recordings, of your special events for the purpose of record keeping, in accordance with Article 11 of Special Regulation No. 11, which.

(8) Use of animals

Only when the appearance of animals is necessary for stage presentation may Official Participants send on only trained animals.

* Be sure to comply with the Law of Humane Treatment and Management of Animals.

* For animals designated fierce, an application must be submitted separately to the Animal Protection Center, Aichi Prefectural Government.

(9) Sales of goods

Sale of goods in event facilities is prohibited.

(10) Swords

Official Participants who wish to use swords for stage presentation must consult with the Organizer in advance.

(11) Use of radio equipment

Consult with the Organizer in advance. An application for permission is required.

(12) Interpreters

Interpreters will not be stationed in event facilities.

Official Participants who need interpreters at preliminary meetings and/or on the day of the event must make arrangements for themselves.

III. Stage Management and Event Operation Management

The following works of stage management and event operation management on the day of an event will be performed by staff stationed in the respective event facilities, in consultation with the Official Participant. Other works shall be handled by Official Participants for themselves.

1. EXPO Hall and EXPO Dome

(1) Stage management

- Explanation of how to use permanent equipment items, such as audio-visual and lighting equipment, and support for maintaining such equipment
- Operation of stage machinery systems, such as elevating battens and trusses
- The above permanent equipment may be operated by the stationed staff. The specifics of their work will be decided through prior discussion between the Organizer and each Official Participant.

(2) Event operation management

The scopes of work and responsibility of stationed staff regarding the following works will be decided for each event through prior discussion between the Organizer and the Official Participant.

- Regulating visitor flow in EXPO Hall and EXPO Dome
- Guiding visitors at an event whose space visitors can enter and exit at any time
- Simple cleaning around audience seats
- Management of equipment for event operation

2. EXPO Plaza

(1) Management of plaza, installations and equipment

- Explanation of how to use permanent equipment items, such as audio-visual and lighting equipment; support for maintaining such equipment

(2) Event management

- Management and carrying in and out
- Management of rehearsals and performances
- Management of event operation (such as regulating and guiding of visitor flow)
- Management of equipment for event operation