

## Table of Contents

Introduction	1
1. Fundamental Policy concerning Accommodations	2
2. Qualifications for Living in Accommodations	2
3. General Information on Accommodations	2
(1) List of Accommodations	
(2) Commuting to and from Exhibition Site	
(3) Hotline Center	
(4) Parking Lot	
4. Accommodation Rental	3
(1) Payment Method	
(2) Security Deposit and Bearing of Costs for Restoration Work	
5. Execution of the Tenancy Agreement	5
(1) Rental Period	
(2) Termination before Expiration	
(3) Tenancy Agreement	
6. Application for Accommodations	6
7. Determination of Accommodations	6
8. Rental Furniture	6
Accommodation Application Form	7
Example Accommodation Application Form	8
Rental Furniture Price List (Standard Set)	9
Rental Furniture Application Form (Standard Set and Optional Furniture)	10
9. Linen Service	11
10. Utilities, Fixed-line/Mobile Phones and Internet	11
11. Notes on Living in Accommodations	12
(1) Shoes	
(2) Locks	
(3) Pets	
12. Model Rooms	12
13. Stand-alone House	12
14. Master Key	12
15. Accommodation Guidebook	12
Appendix 1. List of Accommodations	13
Appendix 2. Accommodation Map	14
Appendix 3. Accommodation Guidance	15
Appendix 4. Tenancy Agreement	57



## Introduction

The Japan Association for the 2005 World Exposition (“Organizer”) will provide accommodations for personnel of official participants (“Participants”), who work for their pavilions at the 2005 World Exposition Aichi, Japan (“Exhibition”), so as to ensure Participants’ safe and comfortable living in Japan before, during and after the period of the Exhibition.

In keeping with the Exhibition theme of “an environment-friendly lifestyle,” the Organizer will not construct houses or facilities to accommodate Participants at the Exhibition site and its surroundings. Rather, the Organizer will secure accommodations for Participants mainly in areas along the subway line in Nagoya City.

Participants can also make arrangements for accommodations on their own. In such case, Participants are requested to inform the Organizer of information concerning their accommodations (address, telephone number, etc.) after entering into a tenancy agreement with the landlord.

If there are any questions, feel free to contact the Accommodation Team of the Organizer.

Japan Association for the 2005 World Exposition  
Nagoya Daiya II Bldg. 4F, 3-15-1 Meieki,  
Nakamura-ku, Nagoya, Aichi 450-0002 Japan  
e-mail: [house@expo2005.or.jp](mailto:house@expo2005.or.jp)  
Tel : +81-52-569-2108  
Fax : +81-52-569-2114

Note: Due to the office relocation in September 2004, the above contact address will be changed.

## **1. Fundamental Policy concerning Accommodations**

These guidelines are designed to help Participants with the execution of a tenancy agreement in a prompt, efficient, and secure manner and to ensure smooth operational activities by the Organizer.

The Organizer has secured Aichi Prefectural Government- and Urban Development Corporation (UDC)-built apartment houses, public training center lodging facilities (AOTS Chubu Kenshu Center), weekly rental condominiums, and business hotels as Accommodations for Participants, within one-hour commuting time of the Exhibition site. Thus far, there are approximately 640 housing units with a total of 1,350 rooms. (See "List of Accommodations.") Some 490 of the 640 units are apartment houses currently under construction by Aichi Prefectural Government and UDC. They will be ready for occupancy in February 2005. The remaining facility of about 150 units/rooms, which will be used for Participants from developing countries eligible for assistance, is situated in the AOTS (the Association for Overseas Technical Scholarship) Chubu Kenshu Center.

To those wishing to begin living in such accommodations before February 2005, existing UDC-built and private apartment houses or hotel rooms will be provided or introduced.

Participants are requested to understand the current housing conditions of Japan, and make the contents of these guidelines well known to persons/sections in charge of accommodations in their countries.

## **2. Qualifications for Living in Accommodations**

As far as newly built ones are concerned, those qualified to live in Accommodations prepared by the Organizer are staff members dispatched by Participants from their countries, not including staff members hired in Japan. This does not apply to the existing accommodations.

During the period from March 1 to September 30, 2005, the ATOS Chubu Kenshu Center will accommodate only two people of each developing country eligible for assistance.

## **3. General Information on Accommodations**

### **(1) List of Accommodations**

For general information on accommodations for Participants, see Appendixes 1 (Page 13: List of Accommodations), 2 (Page 14: Accommodation Map) and 3 (Pages 15 – 56: Accommodation Guidance).

### **(2) Commuting to and from the Exhibition Site**

For commuting to and from the Exhibition site, Participants are in principle, required to use public transportation at their own expense. For public transportation, we recommended the purchase of coupon tickets or commuter pass. There are three types of passes: one-month, three-month, and six-month passes. The longer the valid period, the greater the discount. For the combined use of subway and bus services in Nagoya City, the Yurika card is very convenient and economical: it allows you to ride both city buses and subways with transfer discounts. For more information, access the Transportation Bureau City of Nagoya website: <http://www.kotsu.city.nagoya.jp/english/tickettypes-e.htm>

During the period of the Exhibition, shuttle bus services will be provided three times a day (morning, afternoon and evening) from accommodations to the Exhibition site and vice-versa for those staying in accommodations located in the districts that have infrequent local bus service in the morning and evening, or that require more than one-hour commuting.

For shuttle bus fares, see "List of Accommodations" (Page 13).

Further information on shuttle bus services, including timetables and how to pay fares, will be provided in due course.

### (3) Hotline Center

A hotline center will be established by the Organizer. From 8:00 a.m. to 8:00 p.m., the center will provide consulting services concerning accommodations and living in Japan; between 8:00 p.m. to 8:00 a.m., the center will handle mainly matters of urgency. This is a telephone service; but if necessary, center personnel will be sent to the caller's place. According to the situation, the caller may be charged for dispatching personnel; be sure to check in advance whether or not a fee will be charged for such service.

The hotline service will be provided in English language only. The hotline number will be found in the Accommodation Guidebook to be handed out to Participants when they move into Accommodations.

In addition, the Organizer will dispatch its staff to individual Accommodations to hand out keys to Participants and give them instructions and directions as to living in Accommodations.

### (4) Parking Lot

Individual Accommodations have pay parking. For use of the lot, Participants must indicate this preference on the Accommodation Application Form. For parking fees, see "List of Accommodations" (Page 13).

## 4. Accommodation Rental

### (1) Payment Method

Accommodation rental includes common-area management charge. Bills for Accommodations will be sent in written form to Participants. Participants must remit fees to the designated bank account by the designated date.

Time of Payment	Breakdown	Remarks
After execution of the tenancy agreement and one week prior to move-in	* Accommodation rental and parking fee for first month of occupancy: calculated on prorated daily basis * Accommodation rental from second month of occupancy through March 2005 * Security deposit * Furniture rental	After these payments have been confirmed, key to Accommodations will be handed over on first day of occupancy.
March 2005	* Accommodation rental and parking fee from April 2005 through June	
June 2005	* Accommodation rental and parking fee from July 2005 to agreement expiration date	
Within one month after vacating accommodations	* Balance of security deposit after liquidating Participant liabilities arising from execution of agreement	Balance will be returned to Participant; if necessary, additional fees will be charged.

\* Example:

Accommodation rental (monthly)	JPY 160,000
Furniture rental	JPY 300,000
Parking fee (monthly)	JPY 20,000
Security deposit	JPY 470,000
Period of Occupancy	Feb. 15 through Oct. 10, 2005

Time of Payment & Breakdown	Numerical Expression	Amount of Payment (unit: JPY)
Early Feb. 2005 (Total of (1) to (5))		
(1) Accommodation rental for first month of occupancy (calculated on prorated daily basis)	$160,000 \times 14 \text{ days} \div 28 \text{ days}$	80,000
(2) Accommodation rental for Mar. 2005		160,000
(3) Furniture rental		300,000
(4) Parking fee for first month of occupancy (calculated on prorated daily basis)	$20,000 \times 14 \text{ days} \div 28 \text{ days}$	10,000
(5) Parking fee for Mar. 2005		20,000
(6) Security deposit		470,000
Subtotal		1,040,000
Mar. 2005 (Total of (1) & (2))		
(1) Accommodation rental from Apr. through Jun. 2005	$160,000 \times 3 \text{ months}$	480,000
(2) Parking fee from Apr. through Jun. 2005	$20,000 \times 3 \text{ months}$	60,000
Subtotal		540,000
Jun. 2005 (Total of (1) to (4))		
(1) Accommodation rental from Jul. through Sept.	$160,000 \times 3 \text{ months}$	480,000
(2) Accommodation rental for Oct. (calculated on prorated daily basis)	$160,000 \times 10 \text{ days} \div 31 \text{ days}$	51,610
(3) Parking fee from Jul. through Sept.	$20,000 \times 3 \text{ months}$	60,000
(4) Parking fee for Oct. (calculated on prorated daily basis)	$20,000 \times 10 \text{ days} \div 31 \text{ days}$	6,450
Subtotal		598,060
Grand Total		2,178,060

(2) Security Deposit and Bearing of Costs for Restoration Work

The Organizer has rented Accommodations from their owners on condition of restoration to original condition. The Organizer will check individual accommodations and return them to their original state. Participants must bear the cost of restoration work.

The security deposit paid by Participants upon entering the tenancy agreement will be used to compensate for any damage to the rented accommodations. (For the security deposit, see "List of Accommodation.") The balance of the security deposit, after liquidating costs incurred by restoration work, will be returned to Participants. If the security deposit is insufficient, however, the shortfall must be paid by Participants.

The security deposit is equal to three months' rental, not including common-area management charge.

For the AOTS Chubu Kenshu Center accommodations, no security deposit will be required. If there is any damage to furniture and fixtures and common facilities, however, Participants will have to bear any repair costs.

On the Accommodation Application Form, be sure to enter the bank account number to which the security deposit is to be returned.

## **5. Execution of Tenancy Agreement**

As a rule, the Organizer will rent apartment houses from their owners and provide them to Participants under lease. A tenancy agreement must be executed 30 days prior to occupancy.

Participants who require two or more accommodation facilities must enter a tenancy agreement for each facility. However, Accommodation rental will be collectively charged to Participants.

### **(1) Rental Period**

As a rule, the minimum rental period is three months.

For those wishing to stay for a shorter time, the Organizer will provide information on hotels and other accommodations.

### **(2) Termination before Expiration**

Participants wishing to terminate their tenancy agreement before expiration of the rental period must submit the notification of cancellation designated by the Organizer, giving 14 days or more notice. After receiving the key from Participants, the Organizer will check Accommodations and restore them to their original condition. Accommodation rental will be calculated on a prorated daily basis; the Organizer will return the balance of the security deposit and the refunded rental after subtracting the sum necessary for restoring the Accommodation. If the cost of restoration work exceeds the security deposit and rental refunded, Participants will be charged the difference.

### **(3) Tenancy Agreement**

For Tenancy Agreement contents, see pages 57 to 64 of Appendix 4.

## **6. Application for Accommodations**

If Participants wish to use Accommodations prepared by the Organizer, please complete the attached Accommodation Application Form and submit it to the Organizer on or after April 1, 2004. Since there may be multiple applications for the same accommodations, be sure to enter your first to third choices of accommodations. Based on BIE Special Regulation No. 6, applications will be accepted between April 1, 2004 and October 15, 2004. The application form can be sent by e-mail (house@expo2005.or.jp), post or fax.

The AOTS Chubu Kenshu Center will be used as accommodations for developing countries eligible for assistance. Participants who are eligible for assistance and wish to use the Center must submit the application form attached to the Guidelines for Assistance to Developing Countries, which will be provided in due course, for occupancy between March 1 and September 30, 2005.

To use the AOTS Chubu Kenshu Center as accommodations for any time period other than the above, submit the Accommodation Application Form (Page 7) attached to these Guidelines.

## **7. Determination of Accommodations**

Accommodation applications will be compiled at the end of each month, and accommodations will be allocated to Participants in the order of receipt. If there are multiple applications for the same accommodations, tenants will be selected in the order of receipt.

If there are no vacancies in Accommodations that Participants desire, alternate accommodations will be suggested with 30 days of receipt of their applications. Participants are required to reply within 30 days of such suggestion by the Organizer; otherwise, the suggestion will become invalid.

## **8. Rental Furniture**

No Aichi Prefectural government- and UDC-built apartment houses are furnished.

Participants will be able to rent furniture from the Organizer. If desired, the Organizer will make arrangements for furniture installation before Participants move in.

A standard furniture set is available for Participants. Other furniture items are optional.

Please complete the information form (item, quantity and amount), and submit it to the Organizer.

The rental period for the standard furniture set and optional furniture is eight months. To extend that term, additional charges will be required; even for a shorter rental period, Participants are required to pay eight-months' rental fees.

Participants must pay rental fees in advance. Bills for rental furniture will be sent in written form to Participants prior to move-in. Participants must remit fees to the designated bank account by the designated date.

Refer to page 9 for information on rental furniture price list (standard set); page 10 for rental fees for optional furniture. For furniture rental, complete the Rental Furniture Application Form (Standard Set and Optional Furniture) on page 10, and submit it to the Organizer by e-mail (house@expo2005.or.jp), post or fax.

Note: An air Conditioner is included in the standard furniture set.

In most areas of Japan, it is very rainy and humid in June and July, and from late July through August, it is very hot. Air conditioning is essential for summer in Japan. Some Aichi prefectural government-built apartment houses, however, cannot be equipped with air conditioners in every room, for electrical capacity reasons.



## Accommodation Application Form

Accommodation Application Form for Official Participants in the Expo 2005 Aichi, Japan

Japan Association for the 2005 World Exposition

Accommodation Team: Hiroshi KITAHARA, Nobuyuki MURAI, Eiji TAKAHASHI (Messrs.)

Tel: +81-52-569-2108 Fax: +81-52-569-2114

E-mail: house@expo2005.or.jp

We hereby apply for accommodations for Official Participants:

First Choice		Second Choice		Third Choice	
Name of Accommodation:		Name of Accommodation:		Name of Accommodation:	
Type	Unit(s)	Type	Unit(s)	Type	Unit(s)
Parking Lot	Unit(s)	Parking Lot	Unit(s)	Parking Lot	Unit(s)
No. of Residents (estimated)					
Move-in date (planned)					
Move-out date (planned)					
Bank Account Number for Refund					
Rental furniture (standard set)					

Note: For "No. of Residents," please enter total number of residents in Accommodations.

Date :

Country :

Contact Person :

Contact Address  
:

\* For use of the AOTS Chubu Kanshu Center (whose accommodations will be allocated to developing countries eligible for assistance) during the assistance period (March 1 through September 30, 2005), please use the application form attached to the Guidelines for Assistance to Developing Countries that will be provided in due course. To apply for other times, use this application form.

**Example: Accommodation Application Form**

First Choice : (1) Chikusaeki-minami (3LDK-1: 2 units, 2LDK-2: 3 units, 2DK: 4 units)

Second Choice : (7) Urbania-Shiga-Koen (3LDK: 2 units, 2LDK: 7 units)

Third Choice : (6) Miwa (2DK: 3 units, 3DK: 4 units)

Parking Lot : 5 cars

No. of Residents : 20

Move-in date : Feb. 10, 2005

Move-out date : Oct. 5, 2005

Rental furniture : Necessary

—Example—

First Choice		Second Choice		Third Choice	
Name of Accommodation (1)		Name of Accommodation (7)		Name of Accommodation (6)	
Type	Unit(s)	Type	Unit(s)	Type	Unit(s)
3LDK-1	2	3LDK	2	2DK	3
2LDK-2	3	2LDK	7	3DK	4
2DK	4				
Parking Lot	5	Parking Lot	5	Parking Lot	5
No. of Residents (estimated)		20			
Move-in date (planned)		2005・02・10			
Move-out date (planned)		2005・10・05			
Bank Account Number for Refund					
Rental furniture (standard set)		Necessary			

**Rental Furniture Price List (Standard Set) (for One Person)**

Name of Item	Qty.
Lighting fixtures	2
Air conditioner (including standard installation and removal expenses) (2.2 kW)	1
Fridge-freezer (150 L)	1
Automatic washing machine (4.2 kg)	1
Single bed with mattress and set of bedclothes (210 cm)	1
Dining table (1,200 x 750) with 4 chairs	1
Gas stove with 2 burners and grill	1
Total rental fee (including delivery, set up/removal, and installation/removal expenses)	¥ 208,300

\* Total rental fee shown above is for reference in case where rental is for less than 8 months.

\* It is necessary to apply for a standard set of rental furniture per accommodation unit.

\* If BS antenna set up etc. is required, separate estimates will be provided.

\* Consumption tax will be added to all rental fees above.

### Rental Furniture Application Form (Standard Set and Optional Furniture)

	Name of Item	Unit Price (¥)	Desired Qty.
1	Rental furniture price list (standard set) (for one person)	208,300	1
2	Lighting fixtures	3,800	
3	Air conditioner (including standard installation and removal expenses) (2.2 kW)	48,400	
4	Fridge-freezer (300 L)	66,000	
5	Clothes drier (4 kg) with dedicated stand	44,000	
6	25 in. color TV with built-in BS tuner (BS antenna excluded)	33,000	
7	21 in. TV with built-in VCR	33,000	
8	TV stand (for 21 - 25 in. TV)	5,500	
9	Single bed with mattress (210 cm) (not including set of bedclothes)	20,900	
10	Double-decker single pipe beds (with mattress) (not including set of bedclothes)	20,900	
11	Set of bedclothes ((1) to be used on bed, (2) to be use on tatami mats)	32,700	(1) (2)
12	Kitchen cabinet (W = 600)	16,500	
13	Dining table (1,200 x 750) with 4 chairs	17,600	
14	Stand mirror (with wheels)	5,500	
15	Writing desk (with chair)	37,700	
16	Electric fluorescent desk lamp	3,000	
17	Wardrobe (W = 600)	22,000	
18	Storage box (chest of drawers) (W = 600)	22,000	
19	Sofa (for three persons)	16,500	
20	Sofa (for two persons)	13,200	
21	Sofa table	5,500	
22	Bookshelf (W = 600)	22,000	
23	Domestic electric fan	5,500	
24	Domestic vacuum cleaner	14,000	
25	Microwave oven (with toaster function)	15,000	
26	Toaster oven	3,200	
27	Curtains (including curtain rails and lace curtains)	20,900	
28	Rice cooker with keep-warm function (1 L)	6,100	
29	Electric kettle with keep-warm function (2.2 ?)	5,500	

Accommodation (Name & No.): \_\_\_\_\_

Country: \_\_\_\_\_

Contact person: \_\_\_\_\_

Tel: \_\_\_\_\_

E-mail: \_\_\_\_\_

\* Please enter desired values in far right column.

\* Above table is used only when articles in table are delivered together with standard set.

\* Rental fees shown above are available if rental is for less than 8 months.

\* Rental fees shown above are for reference.

\* If additional orders are placed at later date, delivery expenses therefore will be charged separately.

\* Please note that in prefectural government-built apartment housing, it may be impossible to install air conditioners in all rooms of each condominium.

\*If BS antenna set up etc. is required, separate estimates will be provided.

\* For information on items not shown above, please contact us.

\* Consumption tax will be added to all rental fees above.

## **9. Linen Service**

The Organizer does not provide linen service in Accommodations. Information on linen service provider will be given upon request.

## **10. Utilities, Fixed-line/Mobile Phones and Internet**

Participants are responsible for paying utility charges and costs arising from accommodation use, such as electricity, gas, water and fixed-line/mobile phone fees. When moving into Accommodations, Participants must take the necessary procedures for utility start-ups.

Notify the electricity and waterworks companies by phone during business hours on weekdays; those utilities will be ready for use on that day. For gas, however, Participants should contact the gas company a few days before moving in, since gas company staff must come to Accommodations to start the gas supply, and accommodation residents must be present.

Regarding fixed-line and mobile phone services, contact phone companies directly.

For cable TV or Internet service, directly contact service providers. Such services usually take about one week.

For detailed information on applications for various services and contract changes, refer to the guidebook given to Participants upon signing a tenancy agreement.

## **11. Notes on Living in Accommodations**

### **(1) Shoes**

Most houses in Japan, including prefectural government- and UDC-built apartments and private apartments, are designed for shoe removal upon entry; residents must change to room shoes or slippers that will not damage the floor.

Note that Participants are responsible for costs incurred in restoring Accommodations to their original condition.

### **(2) Locks**

Excepting for the main entrance to Accommodations, the door of each room cannot be locked. If it is necessary that a room be lockable, please rent Accommodations for one person.

### **(3) Pets**

No pets (dog, cat, etc.) can be kept in Accommodations.

## **12. Model Rooms**

There are no model rooms for Accommodations currently under construction by the prefectural government and UDC. However, some existing apartment rooms are open for observation by Participants. If such is necessary, consult the Organizer.

## **13. Stand-alone House**

Participants wishing to live in a stand-alone house, should consult the Organizer; they will be introduced to a real-estate company dealing with such houses.

## **14. Master Key**

For Accommodations owned by the prefectural government and UDC, three keys will be given to individual Participants. The owners of Accommodations do not have a master key; care should be taken so as not to lose any of the keys, so as to prevent intrusion by outsiders.

If a key is lost, Participants must bear the cost of having it replaced with a new one.

At the AOTS Chubu Kenshu Center, there are master keys; when required, AOTS staff may check rooms to ensure resident safety.

## **15. Accommodation Guidebook**

When a tenancy agreement is signed Participants will be given the Accommodation Guidebook, which provides various information such as utility service contacts, how to use Accommodation facilities, notes on living in Accommodations, and major facilities in the neighborhood.

## List of Accommodations

\*\*\*Each accommodation is available as of February 2005\*\*\*

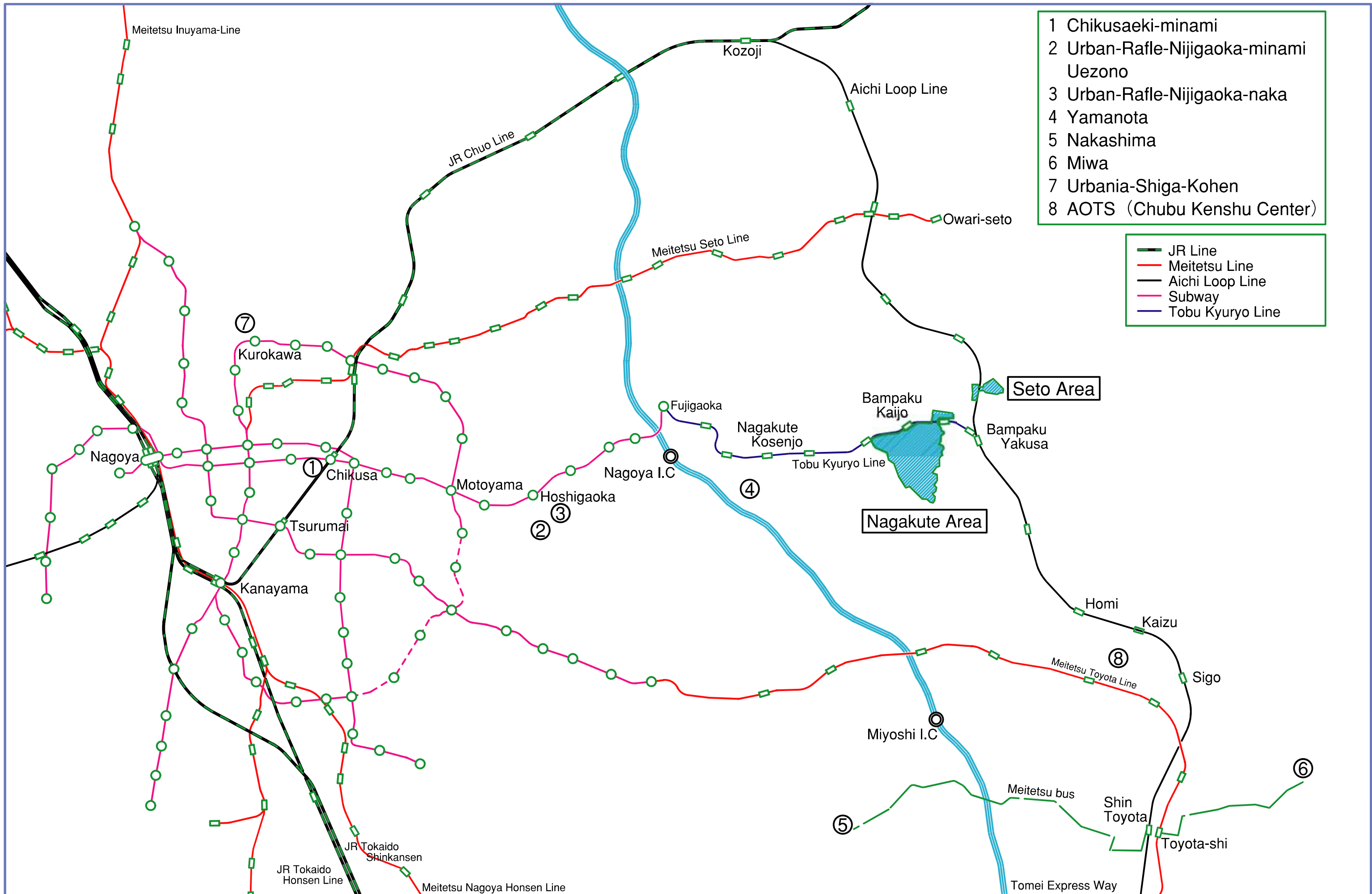
## Appendix 1

No.	Address	Room type	No. of units	Floor area (m <sup>2</sup> )	Monthly rent (yen)	Security deposit (yen)	Parking fee (yen)	Shuttle bus (one way fare/yen)
	<b>Location: Chikusaeki-minami</b>  3-20 Sinsakae, Naka-ku Nagoya City, Aichi Prefecture	1DK*	7	46	¥100,800	¥288,000	¥20,000	————
		1LDK	6	51	¥109,200	¥312,000	¥20,000	————
		2DK	21	57-59	¥120,800	¥345,000	¥20,000	————
		2LDK-1	7	61	¥123,900	¥354,000	¥20,000	————
		2LDK-2	27	71-73	¥137,600	¥393,000	¥20,000	————
		3LDK-1	14	79-80	¥167,000	¥477,000	¥20,000	————
		3LDK-2	1	97	¥184,800	¥528,000	¥20,000	————
		4LDK	7	94	¥206,900	¥591,000	¥20,000	————
	<b>Location: Uezono</b>  2-1 Uezono-cho, Meito-ku Nagoya City, Aichi Prefecture							
		2DK	18	54	¥73,300	¥209,400	¥9,000	————
		3DK	30	69	¥91,800	¥262,200	¥9,000	————
	<b>Location: Urban-Raffle-Nijigaoka-minami</b>  2-1 Uezono-cho, Meito-ku Nagoya City, Aichi Prefecture							
		2LDK	14	66	¥95,600	¥273,000	¥10,000	————
		3LDK	14	75	¥112,400	¥321,000	¥10,000	————
	<b>Location: Urban-Raffle-Nijigaoka-naka</b>  3-11 Daiman-cho, Meito-ku Nagoya City, Aichi Prefecture	1LDK-1	5	58	¥88,400	¥252,600	¥10,000	————
		1LDK-2	5	59	¥89,900	¥256,800	¥10,000	————
		2LDK-1	10	64	¥94,500	¥270,000	¥10,000	————
		2LDK-2	10	68	¥100,400	¥286,800	¥10,000	————
		2LDK-3	5	68	¥100,400	¥286,800	¥10,000	————
		3LDK	5	74	¥112,400	¥321,000	¥10,000	————
		4LDK	5	92	¥128,100	¥366,000	¥10,000	————
	<b>Location: Yamanota</b>  Yamanota, Nagakute-cho Aichi-gun, Aichi Prefecture	2LDK-1	6	54	¥73,900	¥211,200	¥5,000	————
		2LDK-2	24	54	¥81,800	¥233,700	¥5,000	————
		3DK	34	69	¥88,100	¥251,700	¥5,000	————
		3LDK	16	74	¥95,000	¥271,500	¥5,000	————
	<b>Location: Nakashima</b> 26 Aza Nishinakashima, Oaza Miyoshi Miyoshi-cho, Nishikamo-gun Aichi Prefecture	2DK	12	53	¥69,900	¥199,800	¥5,000	¥1,010
		3DK	24	69	¥83,400	¥238,200	¥5,000	
		3LDK	6	74	¥90,400	¥258,300	¥5,000	
	<b>Location: Miwa</b> 3-25 Miwa-cho Toyota City, Aichi Prefecture	2DK	20	53	¥70,000	¥200,100	¥5,000	¥850
		3DK	50	68	¥82,500	¥235,800	¥5,000	
		4DK	10	79	¥92,100	¥263,100	¥5,000	
	<b>Location: Urbania-Shiga-Kohen</b> 3 Chumaru-cho, Kita-ku Nagoya City, Aichi Prefecture	1LDK	11	52	¥85,700	¥244,800	¥10,000	¥670
		2LDK	44	62-64	¥99,100	¥283,200	¥10,000	
		3LDK	19	72	¥110,300	¥315,000	¥10,000	
	<b>Location: AOTS (Chubu Kensyu Center)</b> 37-12 Mukaihata, Kaizu-cho Toyota City, Aichi Prefecture		150	17	¥180,000	————	————	————
	<b>Total</b>		637					

\* "DK" means the unit has a combined kitchen/dining room

"LDK" means the unit has a living/dining room separate from the kitchen

Number in front of "DK" or "LDK" indicates number of bedrooms





## 1. Urban Development Corporation (UDC)-built apartment housing: Chikusaeki-minami

Address : 3-20 Shinsakae, Naka-ku, Nagoya City, Aichi Prefecture

No. of Units : 90

Structure : Steel-reinforced concrete (SRC)

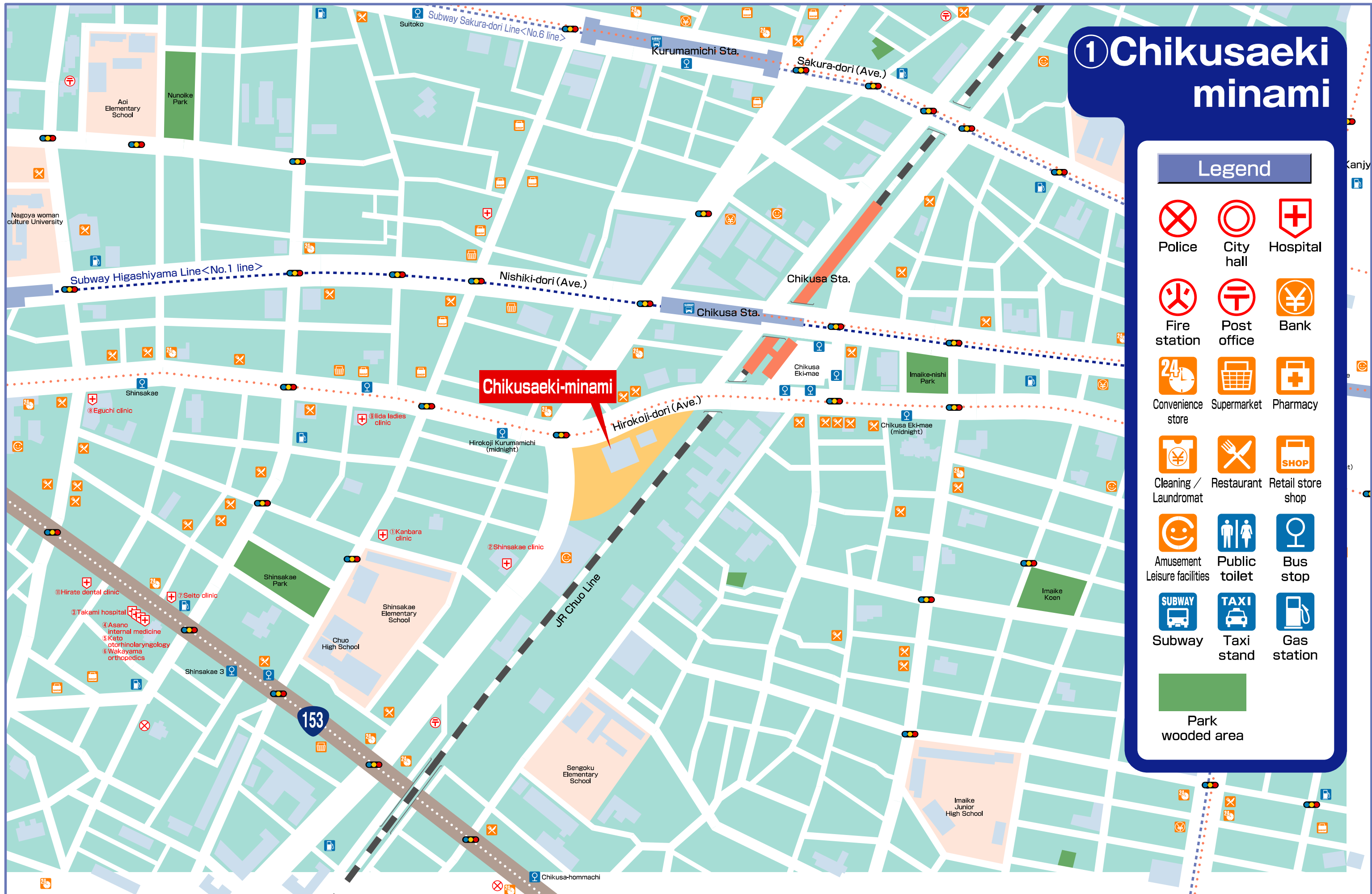
Size : 18 to 24 stories of a 31-story building

Room :

Type of Room	Floor Area (m <sup>2</sup> )	Rental (monthly)	Security Deposit	Parking Fee (monthly)	No. of Units:
1DK	46	¥100,800	¥288,000	¥20,000	7
1LDK	51	¥109,200	¥312,000		6
2DK	57 - 59	¥120,800	¥345,000		21
2LDK-1	61	¥123,900	¥354,000		7
2LDK-2	71 - 73	¥137,600	¥393,000		27
3LDK-1	79-80	¥167,000	¥477,000		14
3LDK-2	97	¥184,800	¥528,000		1
4LDK	94	¥206,900	¥591,000		7

Equipment: Internet, CATV, BS/CS, automatic lock, elevator

- \* This is public corporation apartment housing currently under construction in Naka-ku, Nagoya City.
- \* Approx. 2-min. walk to Subway Chikusa Stn. (Also close to JR Chikusa Stn.)
- \* The building also accommodates commercial facilities, including a coffee shop, and health care facilities.
- \* Major facilities in the neighborhood: convenience stores, supermarkets, medical facilities, sport facilities, banks etc.



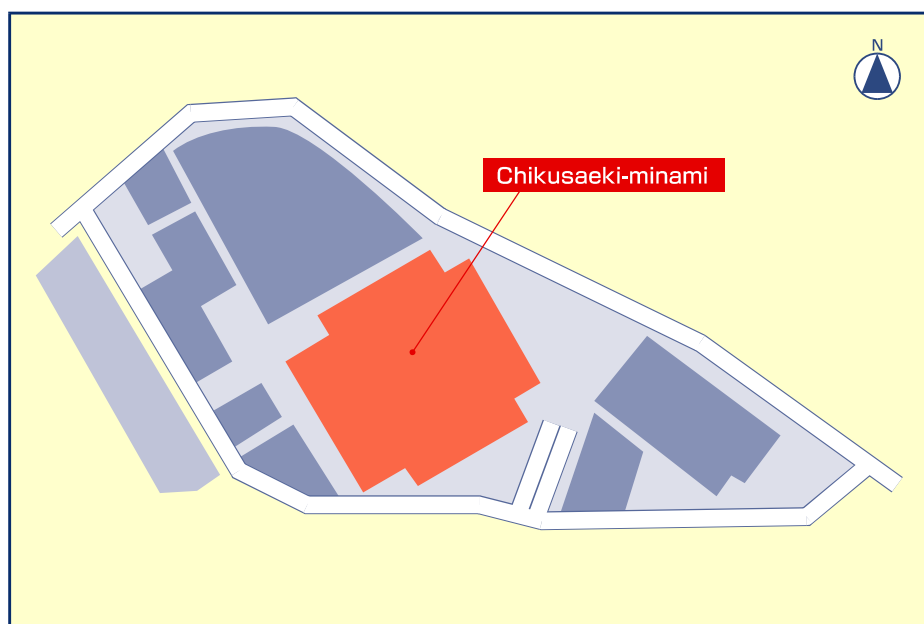
# ① Chikusa-aki-minami

## Legend

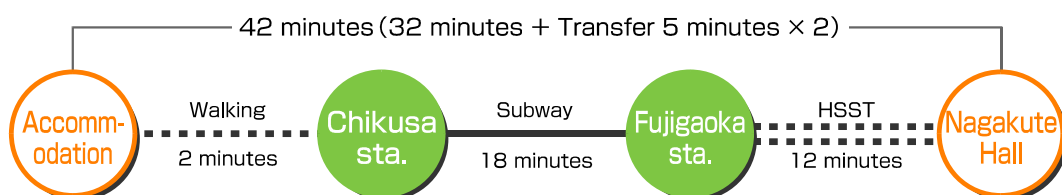
- Police
- City hall
- Hospital
- Fire station
- Post office
- Bank
- Convenience store
- Supermarket
- Pharmacy
- Cleaning / Laundromat
- Restaurant
- Retail store shop
- Amusement Leisure facilities
- Public toilet
- Bus stop
- Subway
- Taxi stand
- Gas station

Park wooded area

# ① Chikusaeki-minami Information



## Traffic route



Fare : One - way ¥640 ※February 2004

## Equipment in residence

Auto door lock · Internet · CATV (Cable TV) ·  
BS/CS (Broadcasting Satellite/Communication Satellite) · Screen door

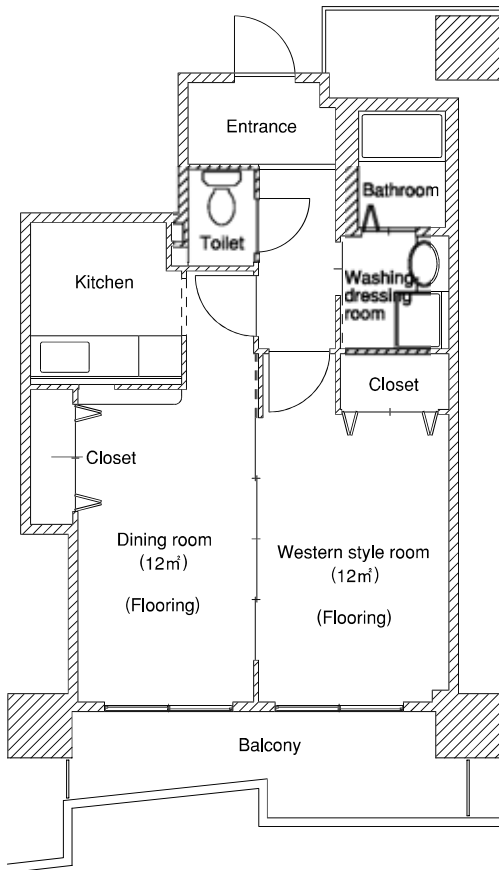
## Medical facilities

- |                                     |  |
|-------------------------------------|--|
| ① Kanbara clinic                    | (Internal medicine·Digestive organ medicine·Gastroenterology·Pediatrics) |
| ② Shinsakae clinic                  | (Internal medicine·Rehabilitation)                                       |
| ③ Takami hospital                   | (Internal medicine·Circulatory organ medicine·Pediatrics·Dermatology)    |
| ④ Asano internal medicine           | (Internal medicine)  |
| ⑤ Kato ear,nose and throat medicine | (Ear, Nose and Throat medicine)  |
| ⑥ Wakayama orthopedics              | (Orthopedics)  |
| ⑦ Seito clinic                      | (Internal medicine·Dermatology·Urology)                                  |
| ⑧ Eguchi clinic                     | (Gastroenterology·Surgery·Orthopedics)                                   |
| ⑨ Iida women's clinic               | (Internal medicine·Obstetrics and Gynecology·Dermatology·Anesthesiology) |
| ⑩ Adachi dental clinic              | (Dentistry)  |
| ⑪ Hirate dental clinic              | (Dentistry)  |

## Electricity·Gas·Water service Application Offices

Electricity	CHUBU Electric Power Co., Inc. (Naka office)	TEL. 052-740-2100
Gas	TOHO GAS Co., Ltd. (Nakamura office)	TEL. 052-471-1151
Water service	JS Co., Ltd.	TEL. 052-852-5644
Internet connection service	NTT Media Supply Co., Ltd.	TEL. 0120-795-444 (Free dial)
Cable TV	Starcat Cable Networks Co., Ltd.	TEL. 0120-181-374 (Free dial)

## Chikusaeki-minami floor plan



Type

1DK

【Floor area】

46m²

【No. of Units】

7 units

Rent

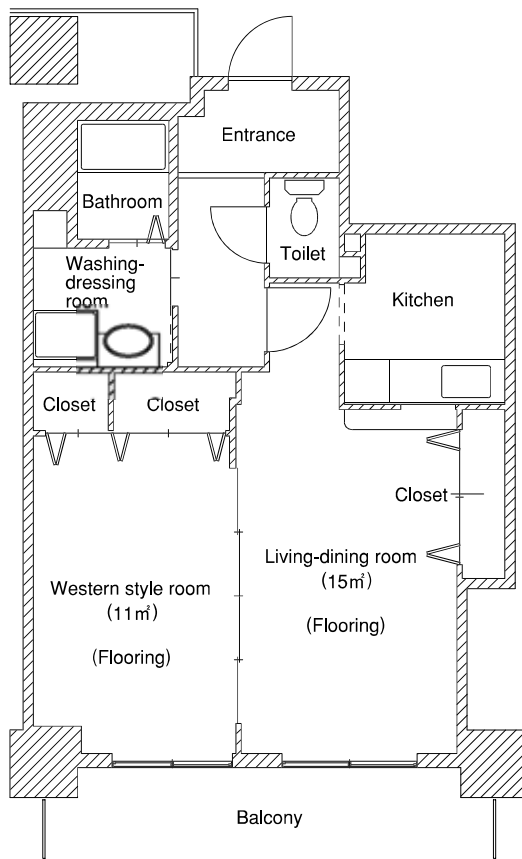
¥100,800-

Security  
Deposit

¥288,000-

Parking  
Fee

¥20,000-



Type

1LDK

【Floor area】

51m²

【No. of Units】

6 units

Rent

¥109,200-

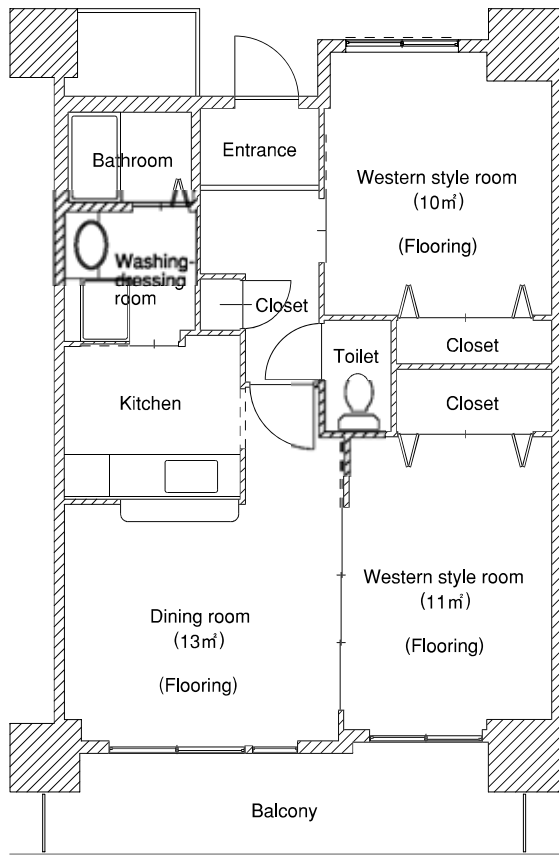
Security  
Deposit

¥312,000-

Parking  
Fee

¥20,000-

## Chikusaeki-minami floor plan



Type

2DK

【Floor area】

57m²~59m²

【No. of Units】

21 units

Rent

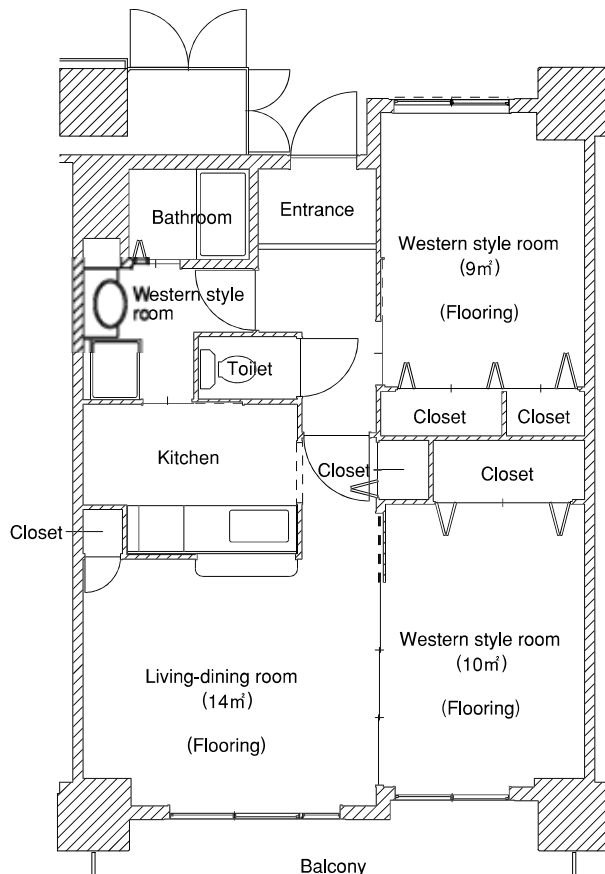
¥120,800-

Security  
Deposit

¥345,000-

Parking  
Fee

¥20,000-



Type

2LDK-1

【Floor area】

61m²

【No. of Units】

7 units

Rent

¥123,900-

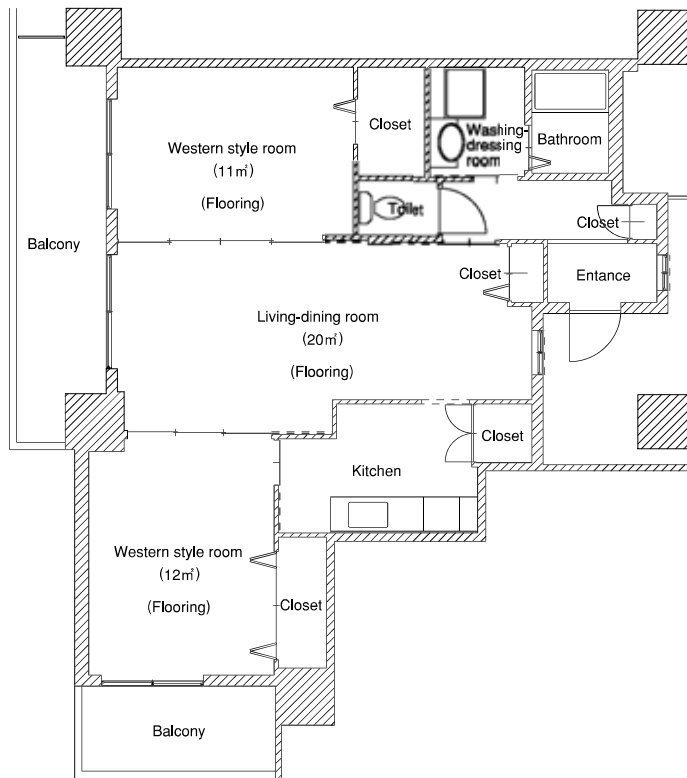
Security  
Deposit

¥354,000-

Parking  
Fee

¥20,000-

## Chikusaeki-minami floor plan



Type

**2LDK-2**

【Floor area】

**71m²~73m²**

【No. of Units】

**27 units**

Rent

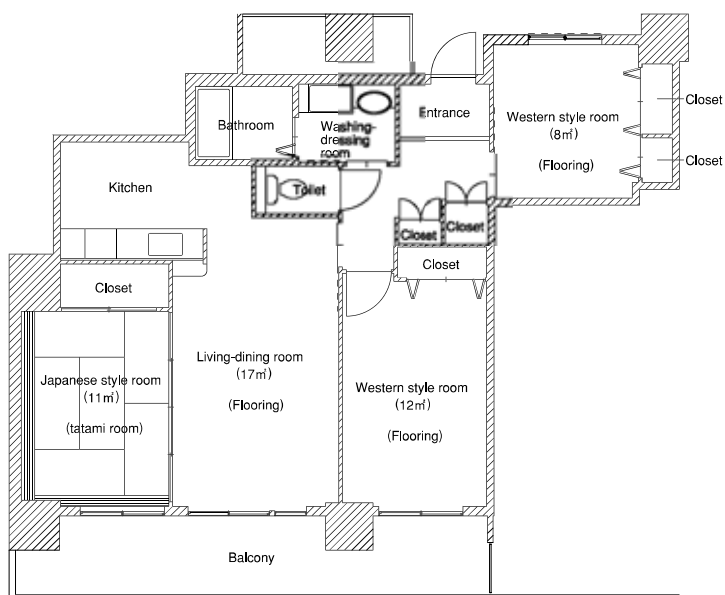
**¥137,600-**

Security  
Deposit

**¥393,000-**

Parking  
Fee

**¥20,000-**



Type

**3LDK-1**

【Floor area】

**79m²/80m²**

【No. of Units】

**14 units**

Rent

**¥167,000-**

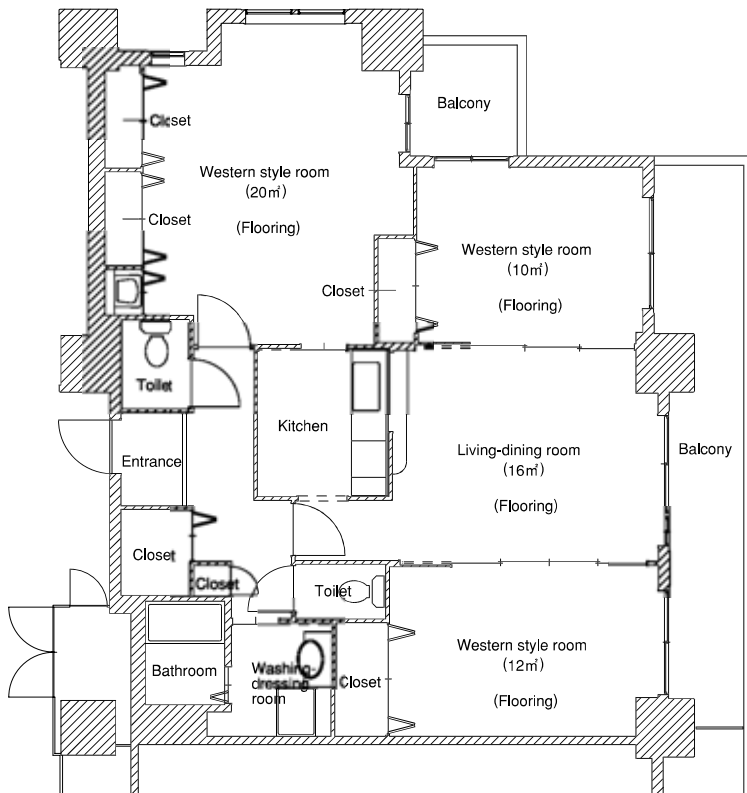
Security  
Deposit

**¥477,000-**

Parking  
Fee

**¥20,000-**

## Chikusaeki-minami floor plan



Type

**3LDK-2**

【Floor area】

**97m²**

【No. of Units】

**1 units**

Rent

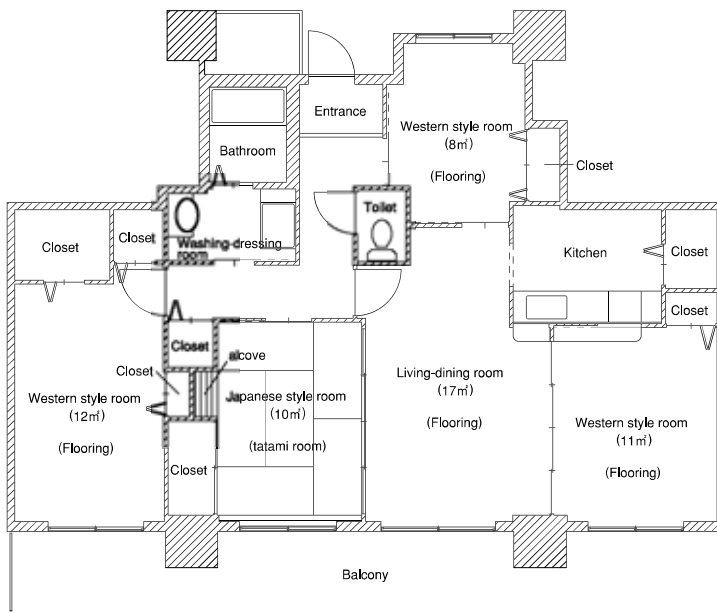
**¥184,800-**

Security  
Deposit

**¥528,000-**

Parking  
Fee

**¥20,000-**



Type

**4LDK**

【Floor area】

**94m²**

【No. of Units】

**7 units**

Rent

**¥206,900-**

Security  
Deposit

**¥591,000-**

Parking  
Fee

**¥20,000-**

## 2. Aichi Prefectural Government-built apartment housing: Uezono

Address : 2-1 Uezono-cho, Meito-ku, Nagoya City, Aichi Prefecture

No. of Units : 48

Structure : Steel-reinforced concrete (SRC)

Size : A six-story building

Room :

Type of Room	Floor Area (m <sup>2</sup> )	Rental (monthly)	Security Deposit	Parking Fee (monthly)	No. of Units:
2DK	54	¥73,300	¥209,400	¥9,000	18
3DK	69	¥91,800	¥262,200		30

Equipment: CATV, elevator

- \* This is Aichi Prefectural government apartment housing currently under construction in Meito-ku, Nagoya City.
- \* Approx. 13-min. walk or 3-min. bus ride (approx. 8-min. walk to nearest bus stop) to Subway Hoshigaoka Stn.
- \* Major facilities in the neighborhood: shopping district, health care facilities, banks etc.
- \* There are also Higashiyama Zoo and Botanical Gardens, as well as many parks near the accommodations.

## Urban Development Corporation (UDC)-built apartment housing: Urban-Rafle-Nijigaoka-minami

Address : 2-1 Uezono-cho, Meito-ku, Nagoya City, Aichi Prefecture

No. of Units : 28

Structure : Steel-reinforced concrete (SRC)

Size : A seven-story building

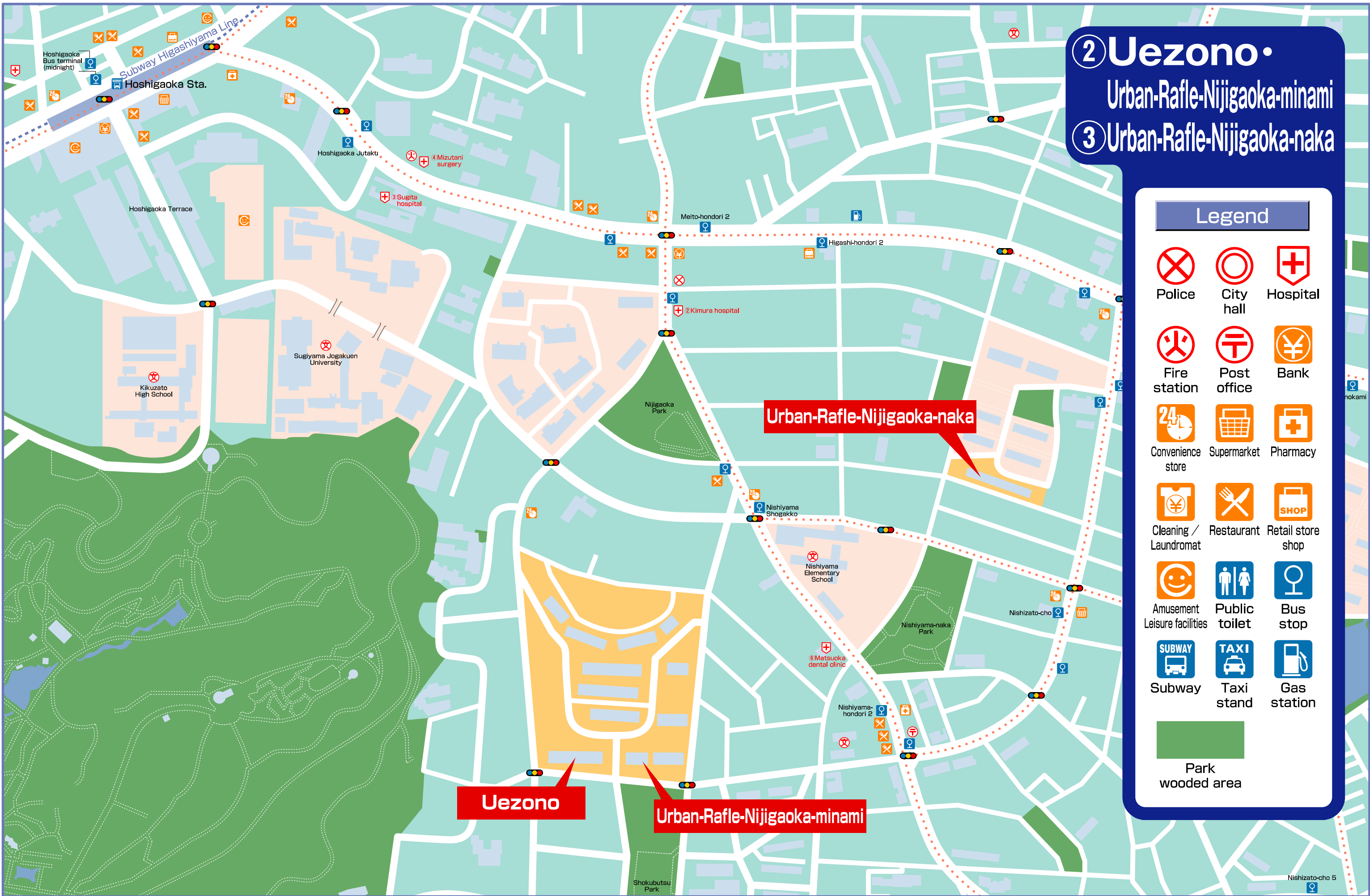
Room :

Type of Room	Floor Area (m <sup>2</sup> )	Rental (monthly)	Security Deposit	Parking Fee (monthly)	No. of Units:
2LDK	66	¥95,600	¥273,000	¥10,000	14
3LDK	75	¥112,400	¥321,000		14

Equipment: Internet, CATV, BS/CS, elevator



















- \* This is public corporation apartment housing currently under construction in Meito-ku, Nagoya City.
- \* Approx. 13-min. walk or 3-min. bus ride (approx. 8-min. walk to nearest bus stop) to Subway Hoshigaoka Stn.
- \* Major facilities in the neighborhood: shopping district, health care facilities, banks etc.
- \* There are also Higashiyama Zoo and Botanical Gardens, as well as many parks near the accommodations.





② Uezono •  
Urban-Rafle-Nijigaoka-minami  
③ Urban-Rafle-Nijigaoka-naka

Legend

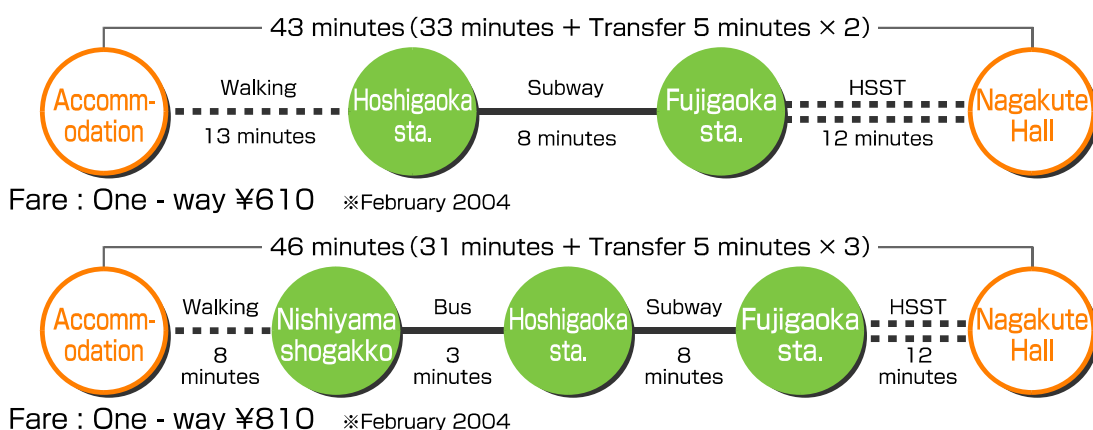
- |  |   |   |
|--|---|---|
| <br>Police                            | <br>City hall          | <br>Hospital               |
| <br>Fire station                      | <br>Post office        | <br>Bank                   |
| <br>Convenience store                | <br>Supermarket       | <br>Pharmacy              |
| <br>Cleaning /<br>Laundromat        | <br>Restaurant       | <br>Retail store<br>shop |
| <br>Amusement<br>Leisure facilities | <br>Public<br>toilet | <br>Bus<br>stop          |
| <br>Subway                          | <br>Taxi<br>stand    | <br>Gas<br>station       |

  
Park  
wooded area

## ② Uezono・Urban-Rafle-Nijigaoka-minami Information



### Traffic routes



### Equipment in residence

CATV (Cable TV) ※Uezono

Internet・CATV (Cable TV)・BS/CS (Broadcasting Satellite/Communication Satellite)・

Screen door ※Nijigaoka-minami

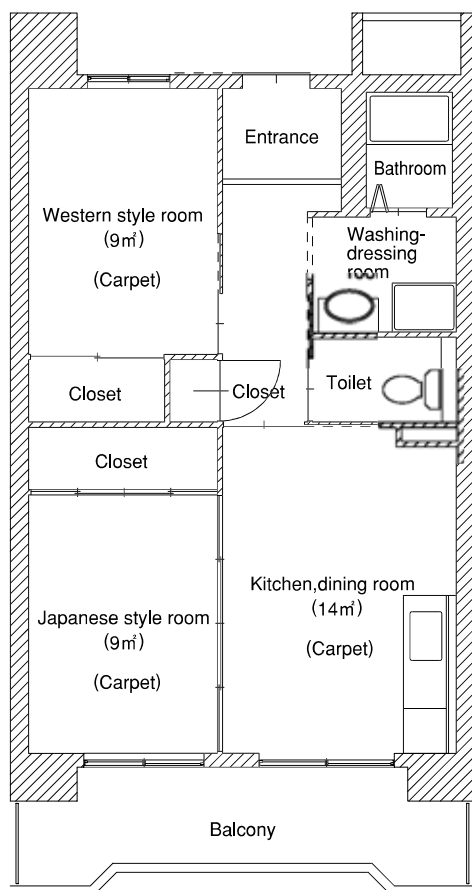
### Medical facilities

- |                            |   |
|----------------------------|---|
| ① Yasui surgery hospital   | (Gastroenterology・Surgery・Orthopedics・Ear, Nose and Throat medicine・Dermatology・Others)       |
| ② Kimura hospital          | (Internal medicine・Gastroenterology・Neurology (internal medicine)・Surgery・Orthopedics・Others) |
| ③ Sugita hospital          | (Psychiatry・Neurology)  |
| ④ Mizutani surgery         | (Internal medicine・Surgery・Orthopedics・Ear, Nose and Throat medicine・Dermatology)             |
| ⑤ Hoshigaoka mental clinic | (Psychiatry・Neurology)  |
| ⑥ Matsuoka dental clinic   | (Dentistry)   |
| ⑦ Sumita dental clinic     | (Dentistry)   |
| ⑧ Yoshida dental clinic    | (Dentistry)   |

### Electricity・Gas・Water service Application Offices

Electricity	CHUBU Electric Power Co., Inc. (Asahi-meito office)	TEL. 052-740-2800
Gas	TOHO GAS Co., Ltd. (Hoshigaoka office)	TEL. 052-781-6131
Water service	JS Co., Ltd. ※Nijigaoka-minami	TEL. 052-852-5644
	Nagoya Waterworks and Sewerage Bureau (Meito office) ※Uezono	TEL. 052-703-1181
Internet connection service	NTT Media Supply Co., Ltd.	TEL. 0120-795-444 (Free dial)
Cable TV	Starcat Cable Networks Co., Ltd.	TEL. 0120-181-374 (Free dial)

## Uezono floor plan



Type

2DK

【Floor area】

54m²

【No. of Units】

18 units

Rent

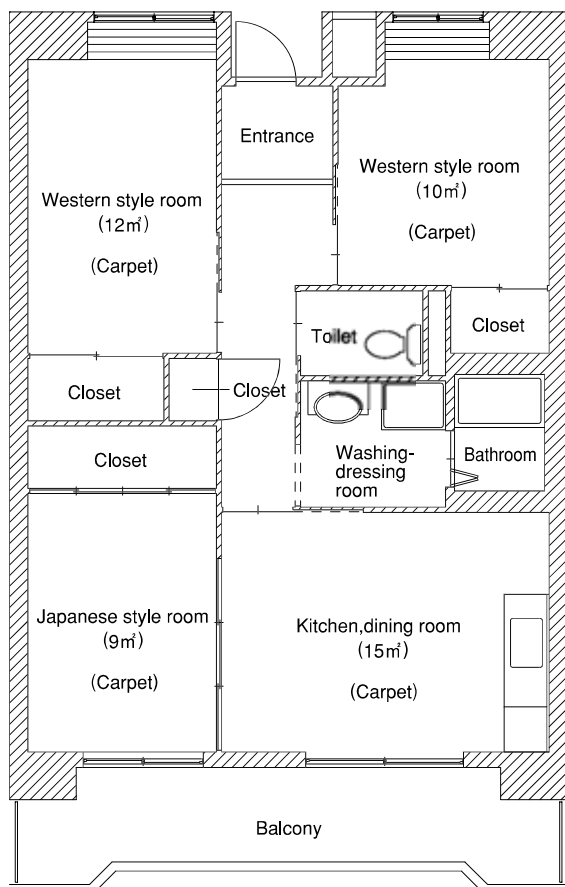
¥73,300-

Security Deposit

¥209,400-

Parking Fee

¥9,000-



Type

3DK

【Floor area】

69m²

【No. of Units】

30 units

Rent

¥91,800-

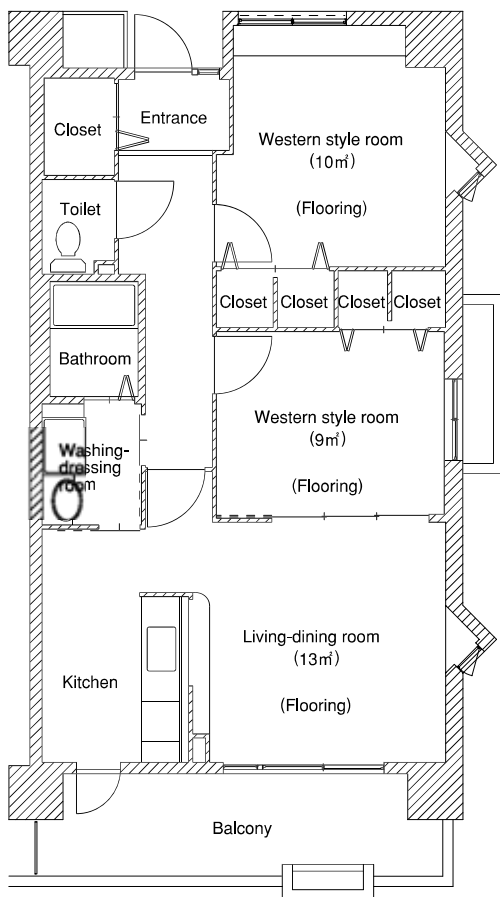
Security Deposit

¥262,200-

Parking Fee

¥9,000-

## Urban-Rafle-Nijigaoka-minami floor plan



Type

**2LDK**

【Floor area】

**66m²**

【No. of Units】

**14 units**

Rent

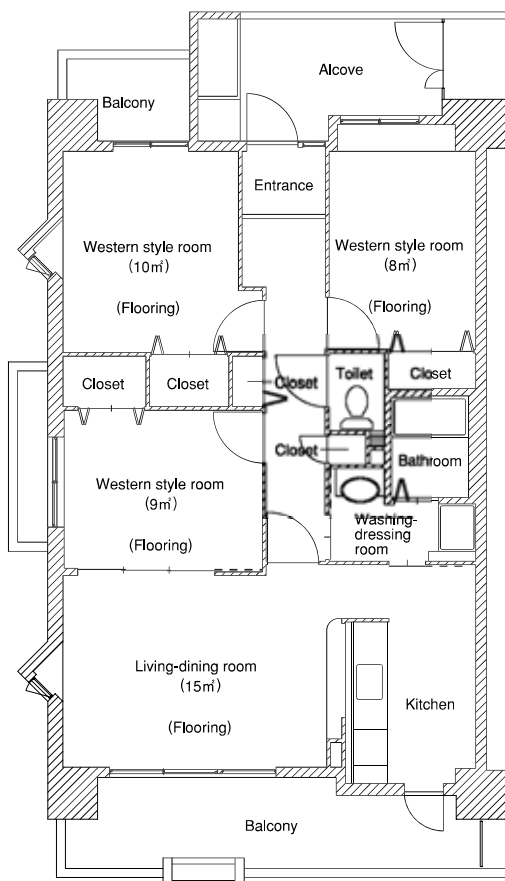
**¥95,600-**

Security  
Deposit

**¥273,000-**

Parking  
Fee

**¥10,000-**



Type

**3LDK**

【Floor area】

**75m²**

【No. of Units】

**14 units**

Rent

**¥112,400-**

Security  
Deposit

**¥321,000-**

Parking  
Fee

**¥10,000-**

## 3. Urban Development Corporation (UDC)-built apartment housing: Urban-Rafle-Nijigaoka-naka

Address : 3-11 Daiman-cho, Meito-ku, Nagoya City, Aichi Prefecture

No. of Units : 45

Structure : Steel-reinforced concrete (SRC)

Size : A five-story building

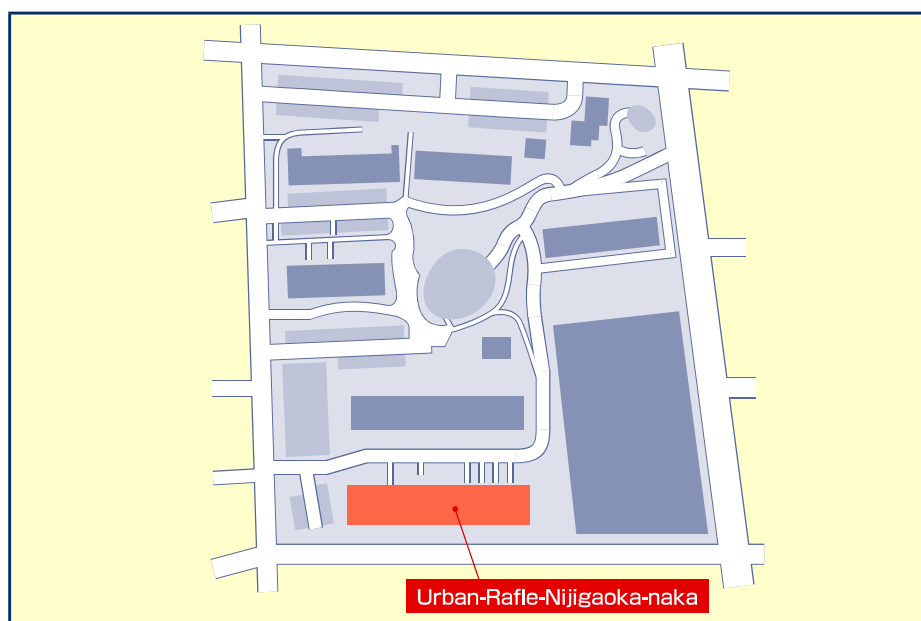
Room :

Type of Room	Floor Area (m <sup>2</sup> )	Rental (monthly)	Security Deposit	Parking Fee (monthly)	No. of Units:
1LDK-1	58	¥88,400	¥252,600	¥10,000	5
1LDK-2	59	¥89,900	¥256,800		5
2LDK-1	64	¥94,500	¥270,000		10
2LDK-2	68	¥100,400	¥286,800		10
2LDK-3	68	¥100,400	¥286,800		5
3LDK	74	¥112,400	¥321,000		5
4LDK	92	¥128,100	¥366,000		5

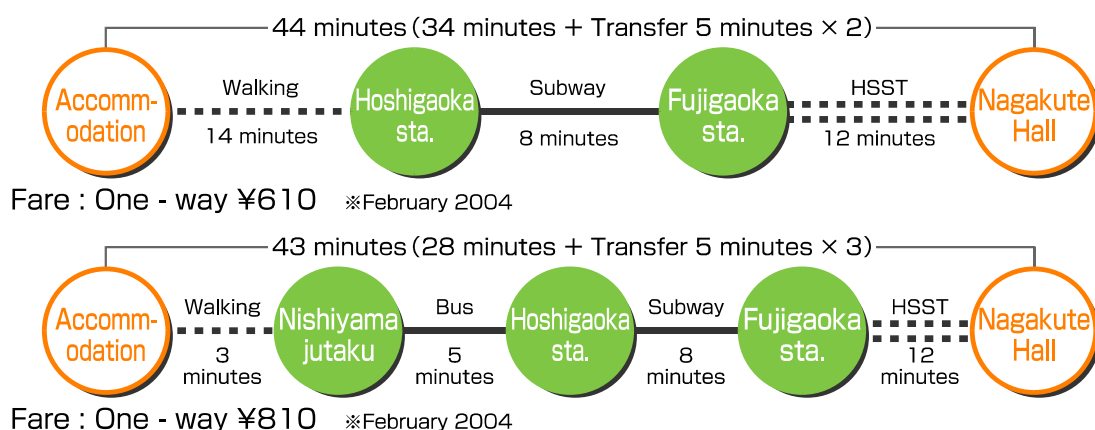
Equipment: Internet, CATV, BS/CS, elevator

- \* This is public corporation apartment housing currently under construction in Meito-ku, Nagoya City
- \* Approx. 14-min. walk or 3-min. bus ride (approx. 3-min. walk to nearest bus stop) to Subway Hoshigaoka Stn.
- \* Major facilities in the neighborhood: shopping district, health care facilities, banks etc.
- \* There are also Higashiyama Zoo and Botanical Gardens, as well as many parks near the accommodations.

### ③ Urban-Rafle-Nijigaoka-naka Information



#### Traffic routes



#### Equipment in residence

Internet · CATV (Cable TV) · BS/CS (Broadcasting Satellite/Communication Satellite) · Screen door

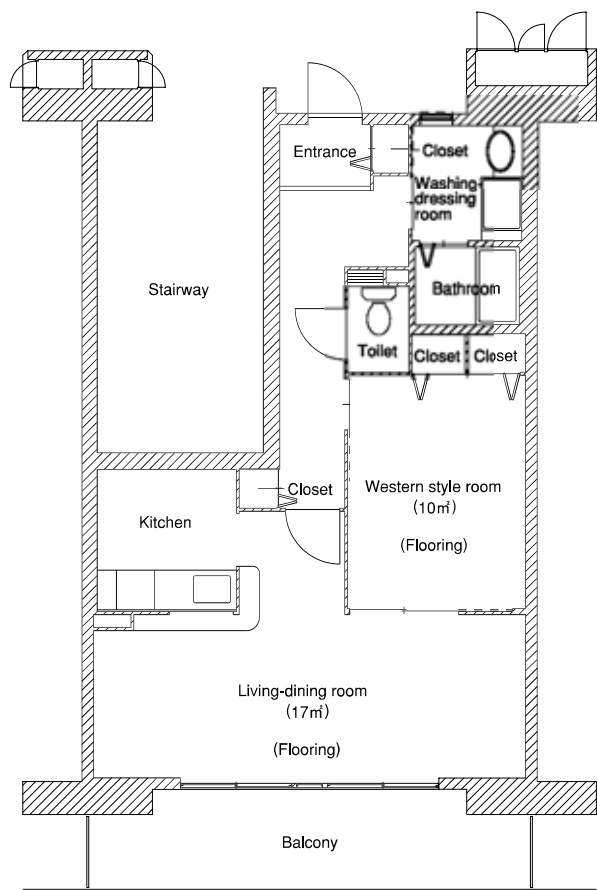
#### Medical facilities

- |                            |   |
|----------------------------|---|
| ① Yasui surgery hospital   | (Gastroenterology · Surgery · Orthopedics · Ear, Nose and Throat medicine · Dermatology · Others)       |
| ② Kimura hospital          | (Internal medicine · Gastroenterology · Neurology (internal medicine) · Surgery · Orthopedics · Others) |
| ③ Sugita hospital          | (Psychiatry · Neurology)  |
| ④ Mizutani surgery         | (Internal medicine · Surgery · Orthopedics · Ear, Nose and Throat medicine · Dermatology)               |
| ⑤ Hoshigaoka mental clinic | (Psychiatry · Neurology)  |
| ⑥ Matsuoka dental clinic   | (Dentistry)   |
| ⑦ Sumita dental clinic     | (Dentistry)   |
| ⑧ Yoshida dental clinic    | (Dentistry)   |

#### Electricity · Gas · Water service Application Offices

Electricity	CHUBU Electric Power Co., Inc. (Asahi-meito office)	TEL. 052-740-2800
Gas	TOHO GAS Co., Ltd. (Hoshigaoka office)	TEL. 052-781-6131
Water service	Nagoya Waterworks and Sewerage Bureau (Meito office)	TEL. 052-703-1181
Internet connection service	NTT Media Supply Co., Ltd.	TEL. 0120-795-444 (Free dial)
Cable TV	Starcat Cable Networks Co., Ltd.	TEL. 0120-181-374 (Free dial)

# Urban-Rafle-Nijigaoka-naka floor plan



Type

**1LDK-1**

【Floor area】

**58m²**

【No. of Units】

**5 units**

Rent

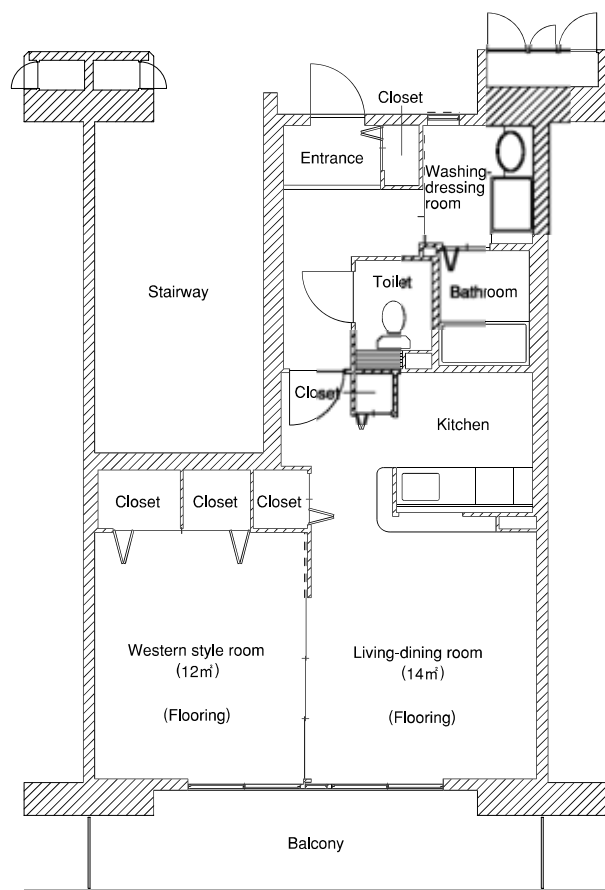
**¥88,400-**

Security  
Deposit

**¥252,600-**

Parking  
Fee

**¥10,000-**



Type

**1LDK-2**

【Floor area】

**59m²**

【No. of Units】

**5 units**

Rent

**¥89,900-**

Security  
Deposit

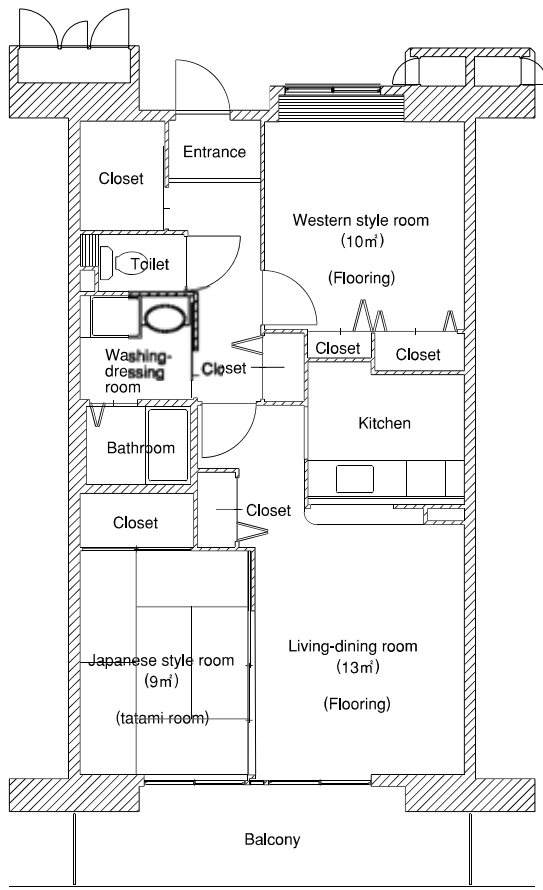
**¥256,800-**

Parking  
Fee

**¥10,000-**



## Urban-Rafle-Nijigaoka-naka floor plan



Type

**2LDK-1**

【Floor area】

**64m²**

【No. of Units】

**10 units**

Rent

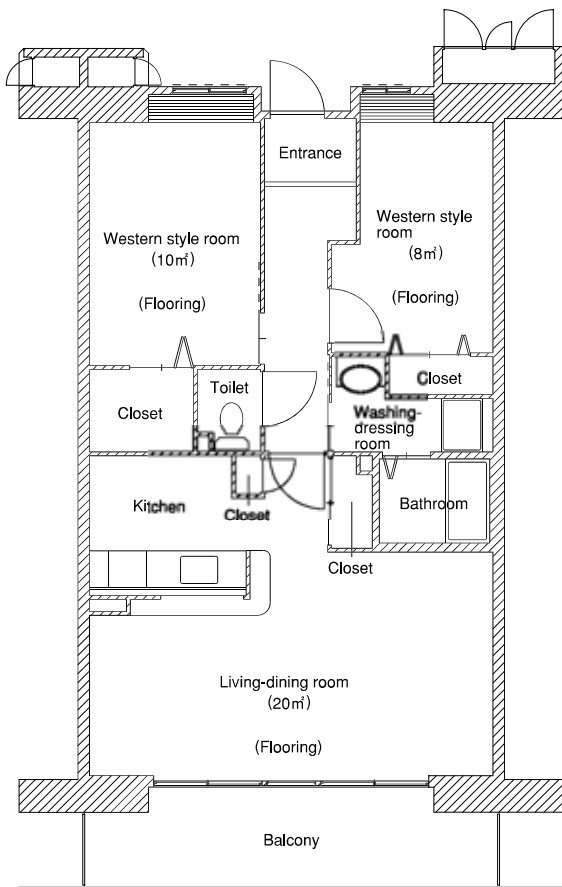
**¥94,500-**

Security  
Deposit

**¥270,000-**

Parking  
Fee

**¥10,000-**



Type

**2LDK-2**

【Floor area】

**68m²**

【No. of Units】

**10 units**

Rent

**¥100,400-**

Security  
Deposit

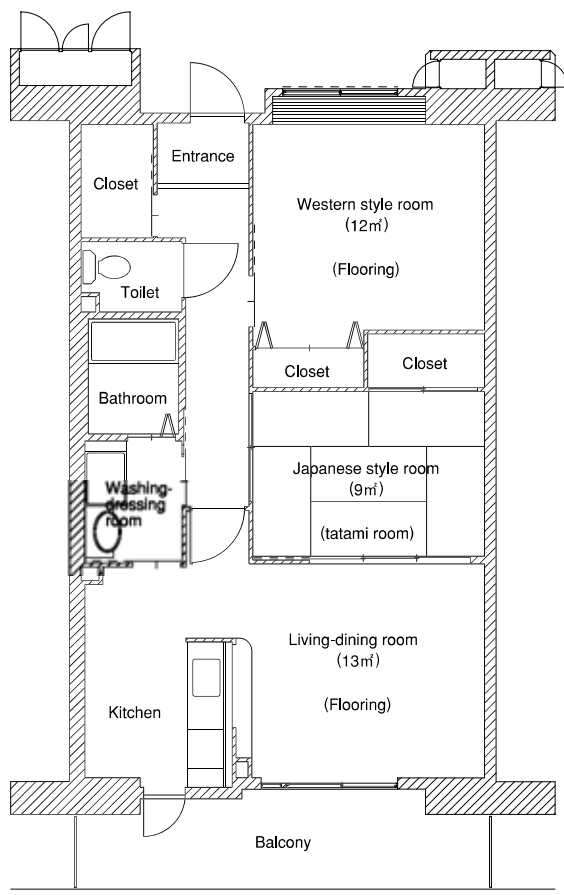
**¥286,800-**

Parking  
Fee

**¥10,000-**



## Urban-Raffle-Nijigaoka-naka floor plan



Type

**2LDK-3**

【Floor area】

**68m²**

【No. of Units】

**5 units**

Rent

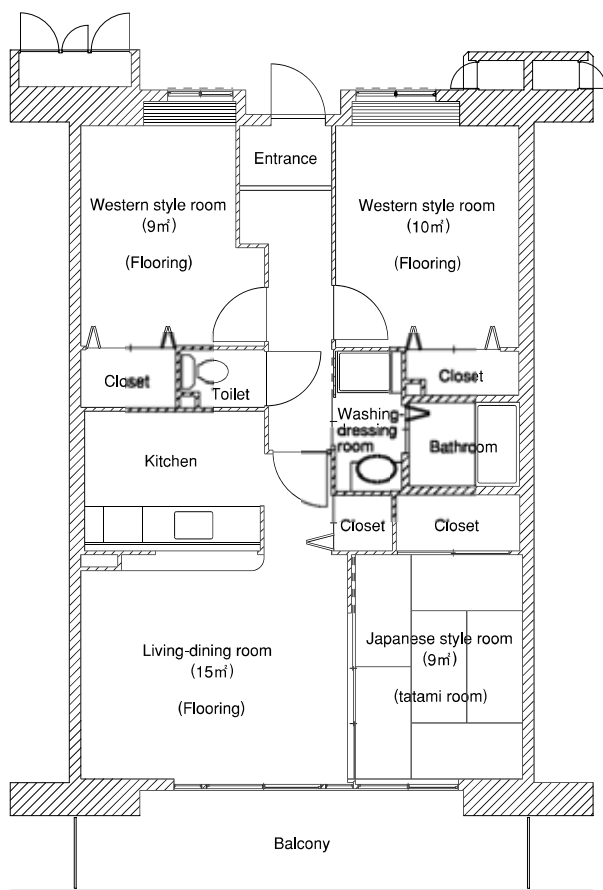
**¥100,400-**

Security  
Deposit

**¥286,800-**

Parking  
Fee

**¥10,000-**



Type

**3LDK**

【Floor area】

**74m²**

【No. of Units】

**5 units**

Rent

**¥112,400-**

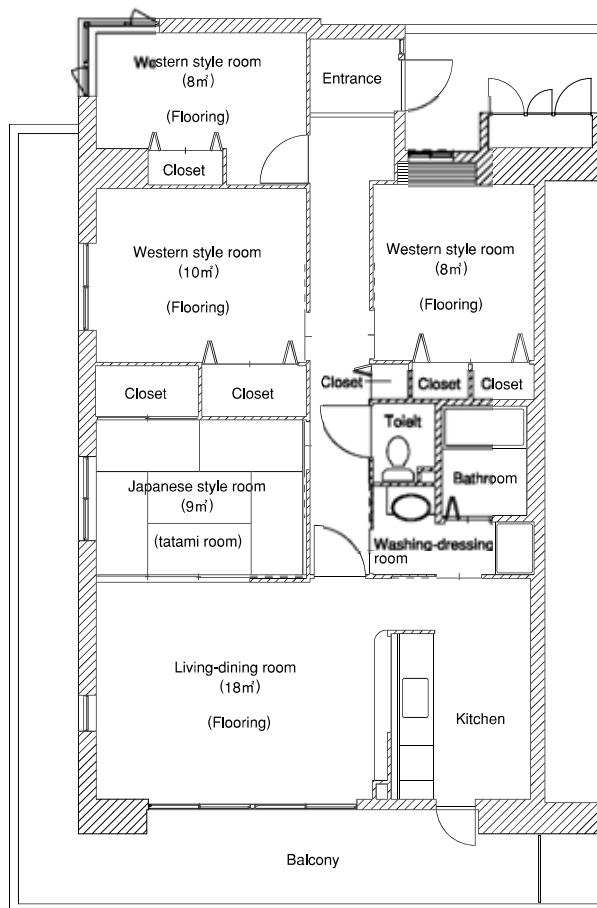
Security  
Deposit

**¥321,000-**

Parking  
Fee

**¥10,000-**

## Urban-Rafle-Nijigaoka-naka floor plan



Type

**4LDK**

[Floor area]

**92m<sup>2</sup>**

[No. of Units]

**5 units**

Rent

**¥128,100-**

Security  
Deposit

**¥366,000-**

Parking  
Fee

**¥10,000-**

## 4. Aichi Prefectural Government-built apartment housing: Yamanota

Address : Yamanota, Nagakute-cho, Aichi-gun, Aichi Prefecture

No. of Units : 80

Structure : Steel-reinforced concrete (SRC)

Size : An eight-story building

Room :

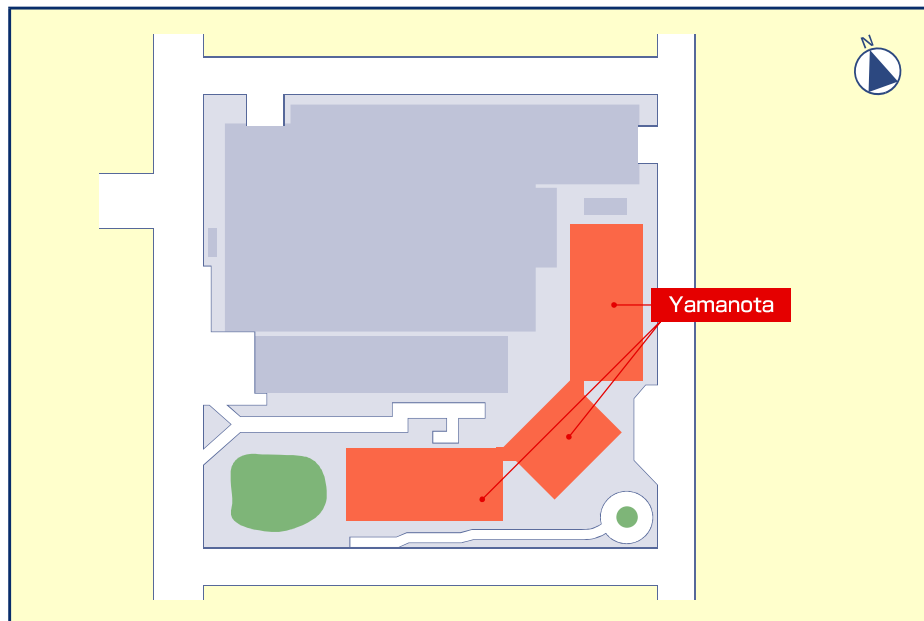
Type of Room	Floor Area (m <sup>2</sup> )	Rental (monthly)	Security Deposit	Parking Fee (monthly)	No. of Units:
2DK-1	54	¥73,900	¥211,200	¥5,000	6
2DK-2	54	¥81,800	¥233,700		24
3DK	69	¥88,100	¥251,700		34
3LDK	74	¥95,000	¥271,500		16

Equipment: CATV, elevator

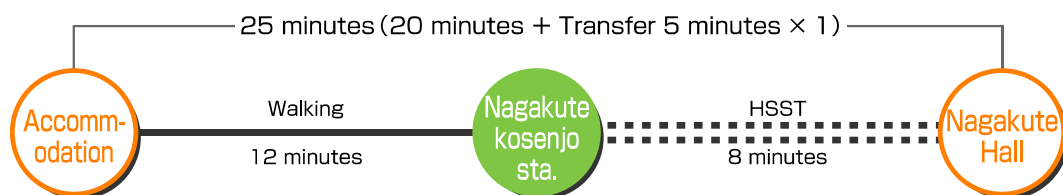
- \* This is Aichi Prefectural government apartment housing currently under construction in Nagakute-cho.
- \* Approx. 12-min. walk to Linimo Kosenjo Stn.; among the accommodations, this is closest to the Nagakute Area of EXPO 2005 Aichi, Japan
- \* Adjacent to a large athletic park with swimming pools and tennis courts
- \* Major facilities in the neighborhood: supermarkets, convenience stores, restaurants etc.



## ④ Yamanota Information



### Traffic route



Fare : One - way ¥260 ※February 2004

### Equipment in residence

TV Cooperation

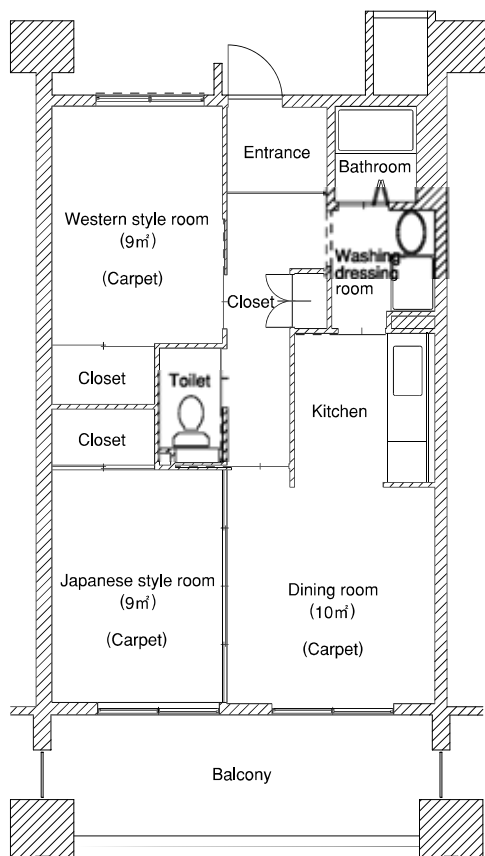
### Medical facilities

- |                           |   |
|---------------------------|---|
| ① Tomei hospital          | (Internal medicine・Surgery・Orthopedics・Others)  |
| ② Hiro orthopedics        | (Orthopedics・Rehabilitation)  |
| ③ Domori clinic           | (Internal medicine・Gastroenterology・Pediatrics)   |
| ④ Nagai internal medicine | (Internal medicine・Circulatory organ medicine・Respiratory organ medicine・Gastroenterology・Pediatrics) |
| ⑤ Ninomiya orthopedics    | (Orthopedics・Rehabilitation)  |
| ⑥ Sako internal medicine  | (Internal medicine・Pediatrics・Respiratory organ medicine・Circulatory organ medicine・Gastroenterology) |
| ⑦ Karera clinic           | (Dermatology・Plastic surgery)   |
| ⑧ Hara dental clinic      | (Dentistry)   |

### Electricity・Gas・Water service Application Offices

Electricity	CHUBU Electric Power Co., Inc. (Asahi-meito office)	TEL. 0561-58-2800
Gas	TOHO GAS Co., Ltd. (Nisshin office)	TEL. 052-802-1234
Water service	Aichi Chubu Water Supply Authority	TEL. 0561-38-0030

## Yamanota floor plan



Type

**2DK-1**

【Floor area】

**54m<sup>2</sup>**

【No. of Units】

**6 units**

Rent

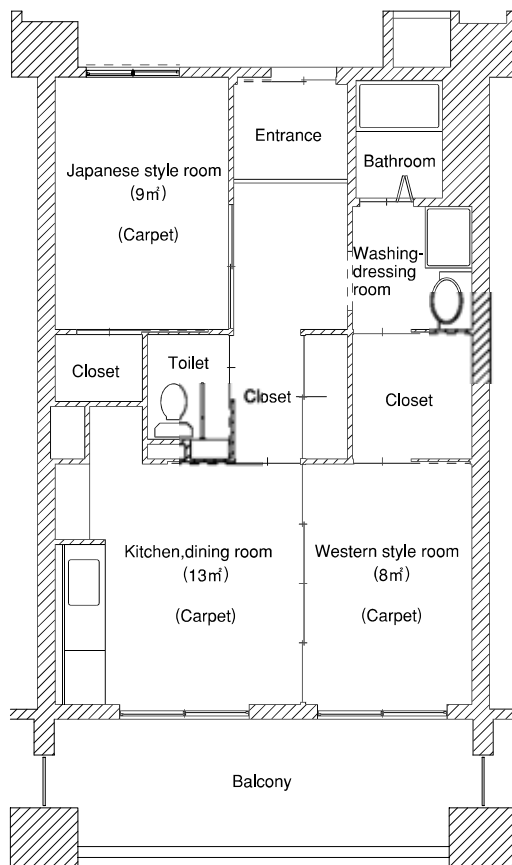
**¥73,900-**

Security  
Deposit

**¥211,200-**

Parking  
Fee

**¥5,000-**



Type

**2DK-2**

【Floor area】

**54m<sup>2</sup>**

【No. of Units】

**24 units**

Rent

**¥81,800-**

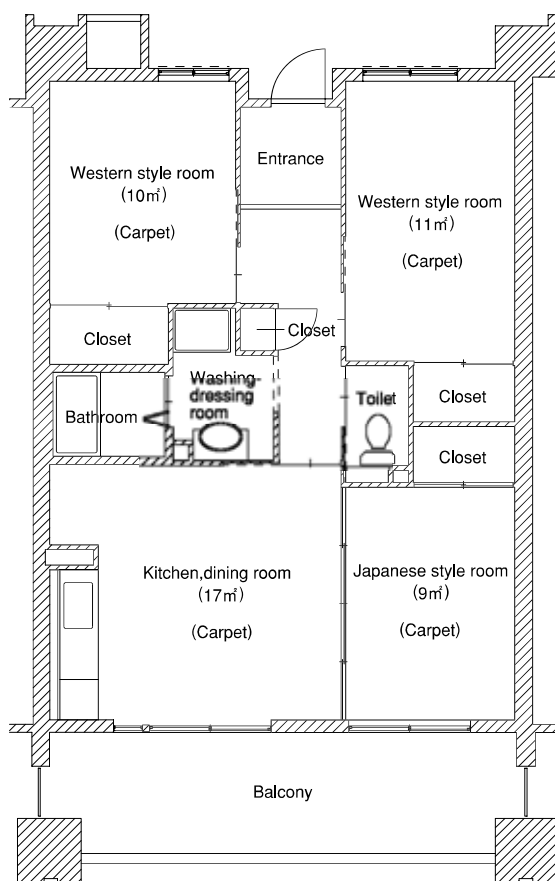
Security  
Deposit

**¥233,700-**

Parking  
Fee

**¥5,000-**

## Yamanota floor plan



Type

**3DK**

【Floor area】

**69m<sup>2</sup>**

【No. of Units】

**34 units**

Rent

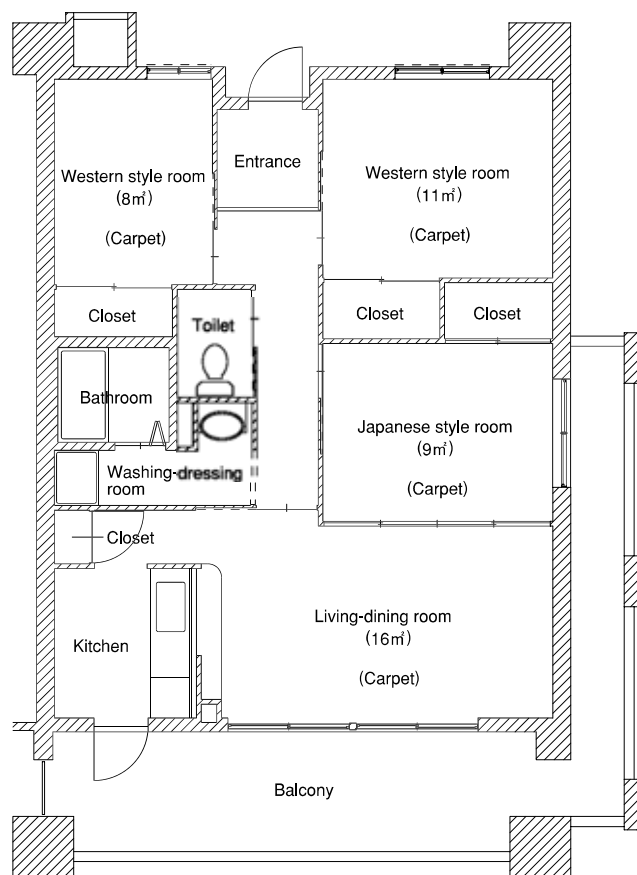
**¥88,100-**

Security  
Deposit

**¥251,700-**

Parking  
Fee

**¥5,000-**



Type

**3LDK**

【Floor area】

**74m<sup>2</sup>**

【No. of Units】

**16 units**

Rent

**¥95,000-**

Security  
Deposit

**¥271,500-**

Parking  
Fee

**¥5,000-**

## 5. Aichi Prefectural Government-built apartment housing: Nakashima

Address : 26 Aza Nishinakashima, Oaza Miyoshi, Miyoshi-cho, Nishikamo-gun, Aichi Prefecture

No. of Units : 42

Structure : Steel-reinforced concrete (SRC)

Size : A six-story building

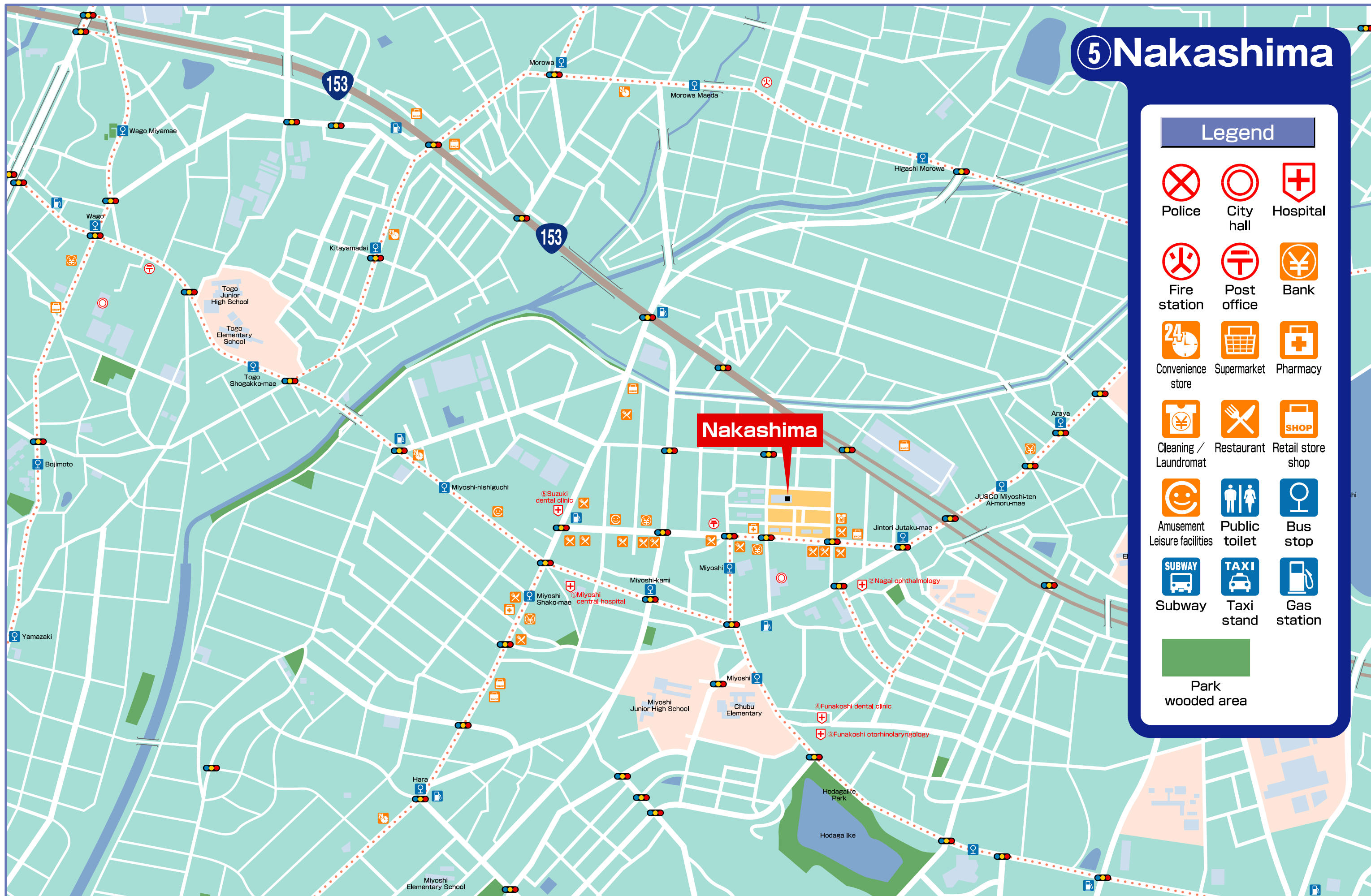
Room :

Type of Room	Floor Area (m <sup>2</sup> )	Rental (monthly)	Security Deposit	Parking Fee (monthly)	No. of Units:
2DK	53	¥69,900	¥199,800		12
3DK	69	¥83,400	¥238,200	¥5,000	24
3LDK	74	¥90,400	¥258,300		6

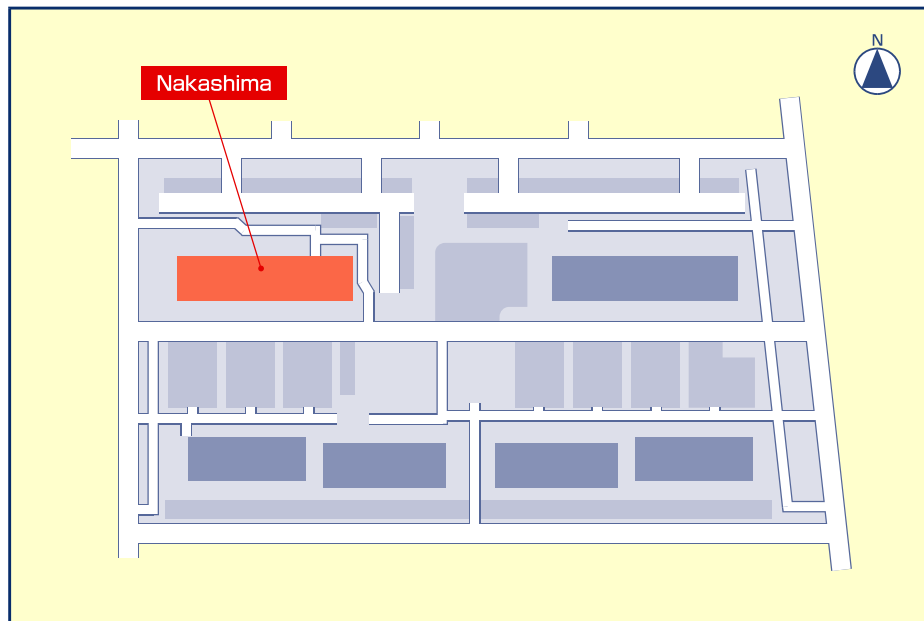
Equipment: CATV, elevator

- \* This is Aichi Prefectural government apartment housing currently under construction in the central area of Miyoshi Town.
- \* Approx. 21-min. bus ride to Shintoyota Stn. on Aikan Line
- \* Major facilities in the neighborhood: a large supermarket that is open until midnight, sport facilities (adjacent to the supermarket), restaurants, town hall, library, park with swimming pools and gym.
- \* Shuttle bus services will be provided between the accommodations and the Exhibition site during the period of Exhibition. (One-way ticket: ¥1,010)

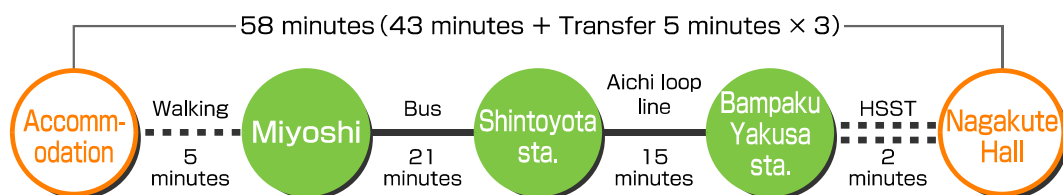




## ⑤ Nakashima Information



### Traffic route



Fare : One - way ¥1,010 ※February 2004

### Equipment in residence

TV Cooperation

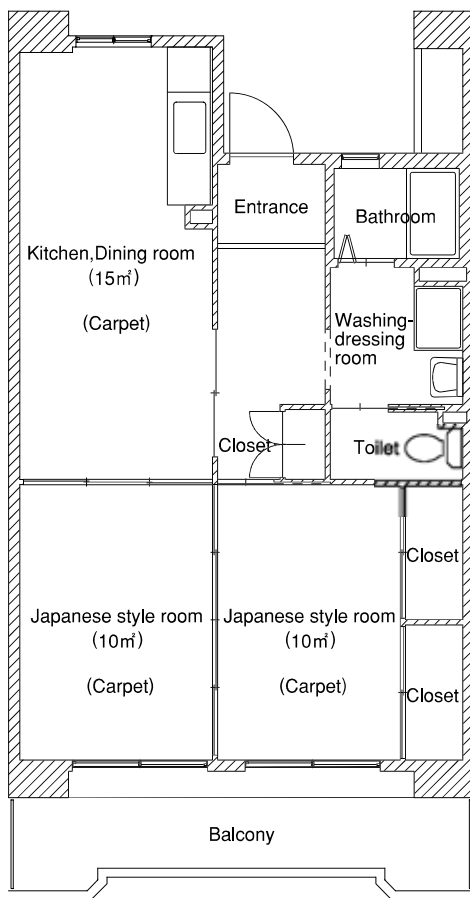
### Medical facilities

- |   |                                    |
|---|------------------------------------|
| ① Miyoshi central hospital                | (Internal medicine・Surgery・Others) |
| ② Nagai ophthalmology                     | (Ophthalmology)                    |
| ③ Funakoshi ear, nose and throat medicine | (Ear, Nose and Throat medicine)    |
| ④ Funakoshi dental clinic                 | (Dentistry)                        |
| ⑤ Suzuki dental clinic                    | (Dentistry)                        |

### Electricity・Gas・Water service Application Offices

Electricity	CHUBU Electric Power Co., Inc. (Toyota office)	TEL. 0565-31-0390
Gas	TOHO GAS Co., Ltd. (Miyoshi Service center)	TEL. 0561-36-1051
Water service	Aichi Chubu Water Supply Authority	TEL. 0561-38-0030

## Nakashima floor plan



Type

2DK

【Floor area】

53m<sup>2</sup>

【No. of Units】

12 units

Rent

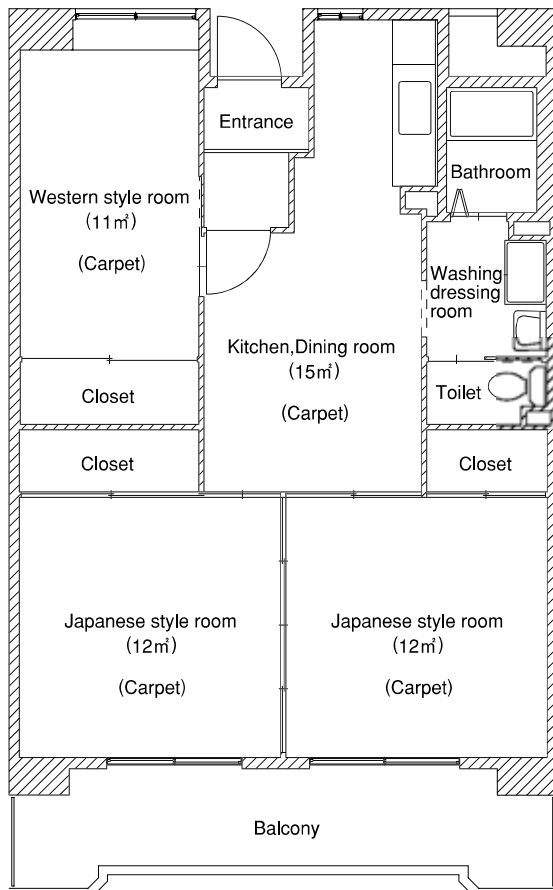
¥69,900-

Security  
Deposit

¥199,800-

Parking  
Fee

¥5,000-



Type

3DK

【Floor area】

69m<sup>2</sup>

【No. of Units】

24 units

Rent

¥83,400-

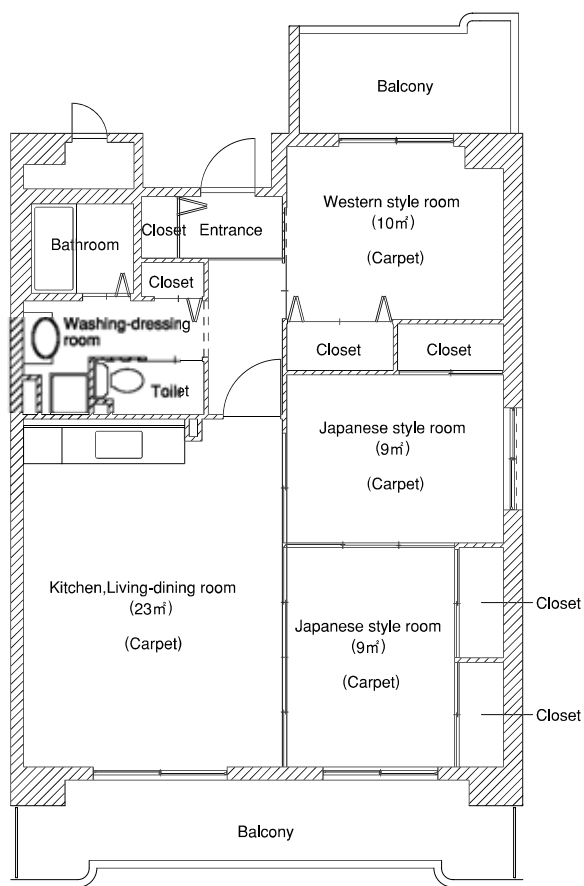
Security  
Deposit

¥238,200-

Parking  
Fee

¥5,000-

## Nakashima floor plan



Type

3LDK

【Floor area】

74m<sup>2</sup>

【No. of Units】

6 units

Rent

¥90,400-

Security  
Deposit

¥258,300-

Parking  
Fee

¥5,000-

## 6. Aichi Prefectural Government-built apartment housing: Miwa

Address : 3-25 Miwa-cho, Toyota City, Aichi Prefecture

No. of Units : 80

Structure : Steel-reinforced concrete (SRC)

Size : Two five-story buildings

Room :

Type of Room	Floor Area (m <sup>2</sup> )	Rental (monthly)	Security Deposit	Parking Fee (monthly)	No. of Units:
2DK	53	¥70,000	¥200,100		20
3DK	68	¥82,500	¥235,800	¥5,000	50
4DK	79	¥92,100	¥263,100		10

Equipment: CATV, elevator

- \* This is Aichi Prefectural government apartment housing currently under construction in Toyota City.
- \* Approx. 11-min. bus ride to Shintoyota Stn. on Aikan Line
- \* Major facilities in the neighborhood: Toyota Stadium, supermarkets, post office and drug stores.
- \* Located in an area blessed with rich natural environment, with many parks
- \* During the period of Exhibition, shuttle bus services will be provided between the accommodations and the Exhibition site. (One-way ticket: ¥850)



## 6 Miwa

### Legend



Police



City hall



Hospital



Fire station



Post office



Bank



Convenience store



Supermarket



Pharmacy



Cleaning / Laundromat



Restaurant



Retail store shop



Amusement Leisure facilities



Public toilet



Bus stop



Subway



Taxi stand



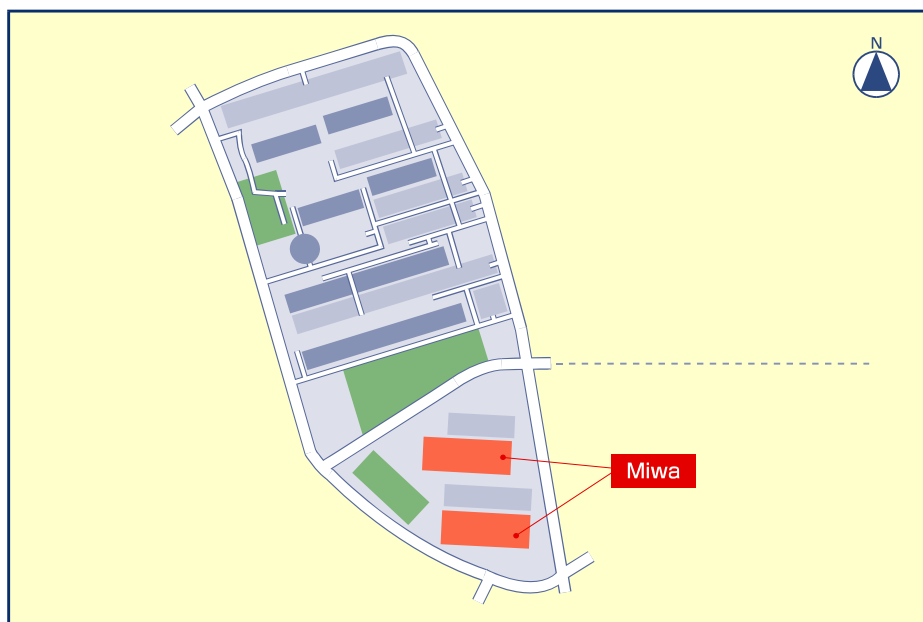
Gas station



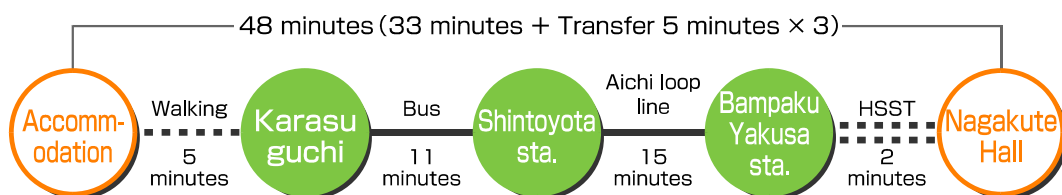
Park wooded area



## ⑥ Miwa Information



### Traffic route



Fare : One - way ¥850 ※February 2004

### Equipment in residence

TV Cooperation

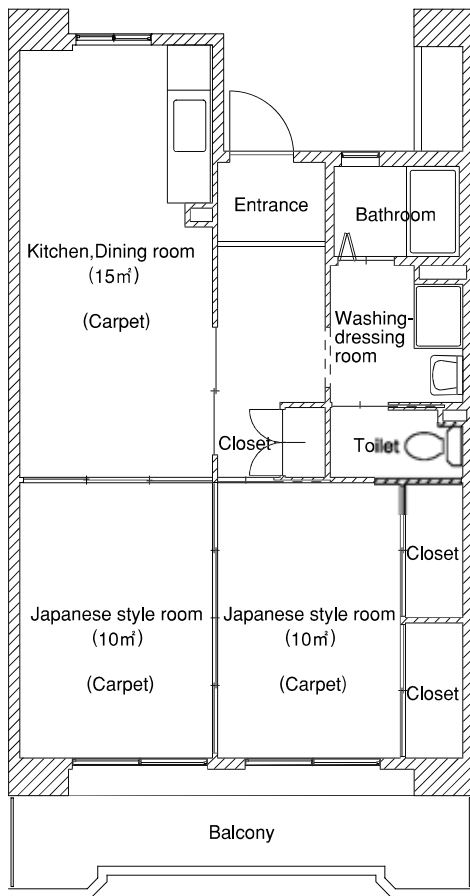
### Medical facilities

- |                                |                                |
|--------------------------------|--------------------------------|
| ① Suganuma clinic              | (Internal medicine・Pediatrics) |
| ② Hirai ophthalmology          | (Ophthalmology)                |
| ③ Toyota-daiichi dental clinic | (Dentistry)                    |
| ④ Osawa dental clinic          | (Dentistry)                    |
| ⑤ Funai dental clinic          | (Dentistry)                    |

### Electricity・Gas・Water service Application Offices

Electricity	CHUBU Electric Power Co., Inc. (Toyota office)	TEL. 0565-31-0390
Gas	TOHO GAS Co., Ltd. (Toyota office)	TEL. 0565-32-3070
Water service	Toyota Waterworks and Sewerage Bureau (Payment Division)	TEL. 0565-34-6654

## Miwa floor plan



Type

2DK

【Floor area】

53m<sup>2</sup>

【No. of Units】

20 units

Rent

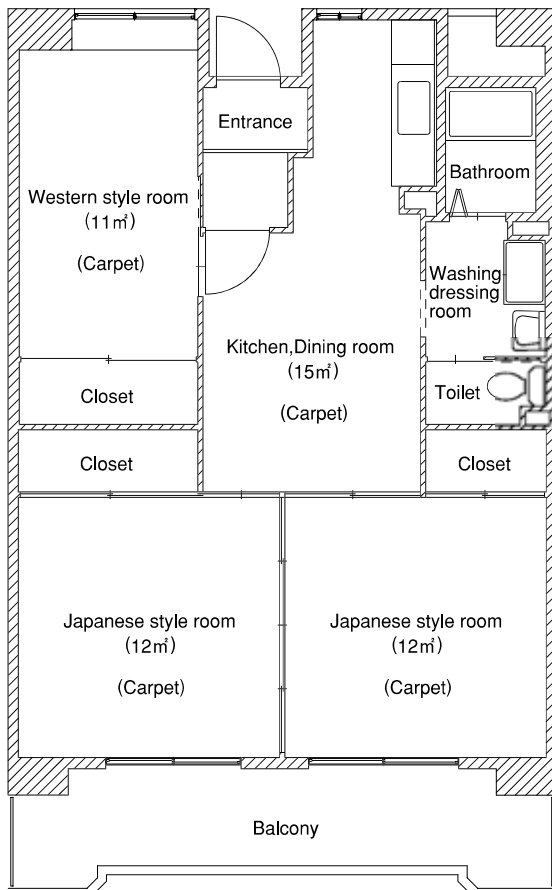
¥70,000-

Security  
Deposit

¥200,100-

Parking  
Fee

¥5,000-



Type

3DK

【Floor area】

68m<sup>2</sup>

【No. of Units】

50 units

Rent

¥82,500-

Security  
Deposit

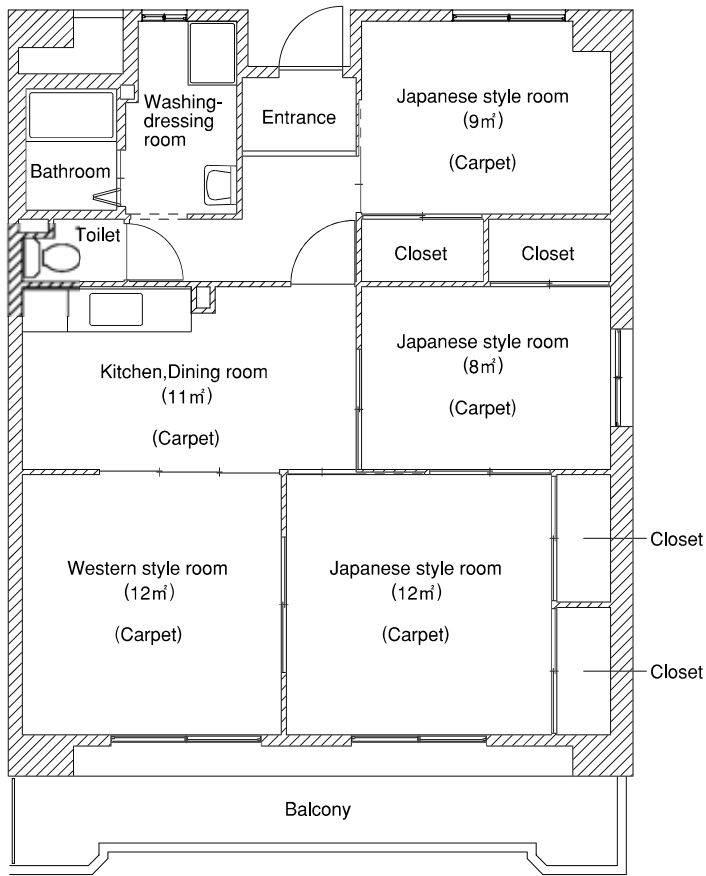
¥235,800-

Parking  
Fee

¥5,000-



## Miwa floor plan



Type

4DK

【Floor area】

79m<sup>2</sup>

【No. of Units】

10 units

Rent

¥92,100-

Security  
Deposit

¥263,100-

Parking  
Fee

¥5,000-

## 7. Urban Development Corporation (UDC)-built apartment housing: Urbania-Shiga-Kohen

Address : 3 Chumaru-cho, Kita-ku, Nagoya City, Aichi Prefecture

No. of Units : 74

Structure : Steel-reinforced concrete (SRC)

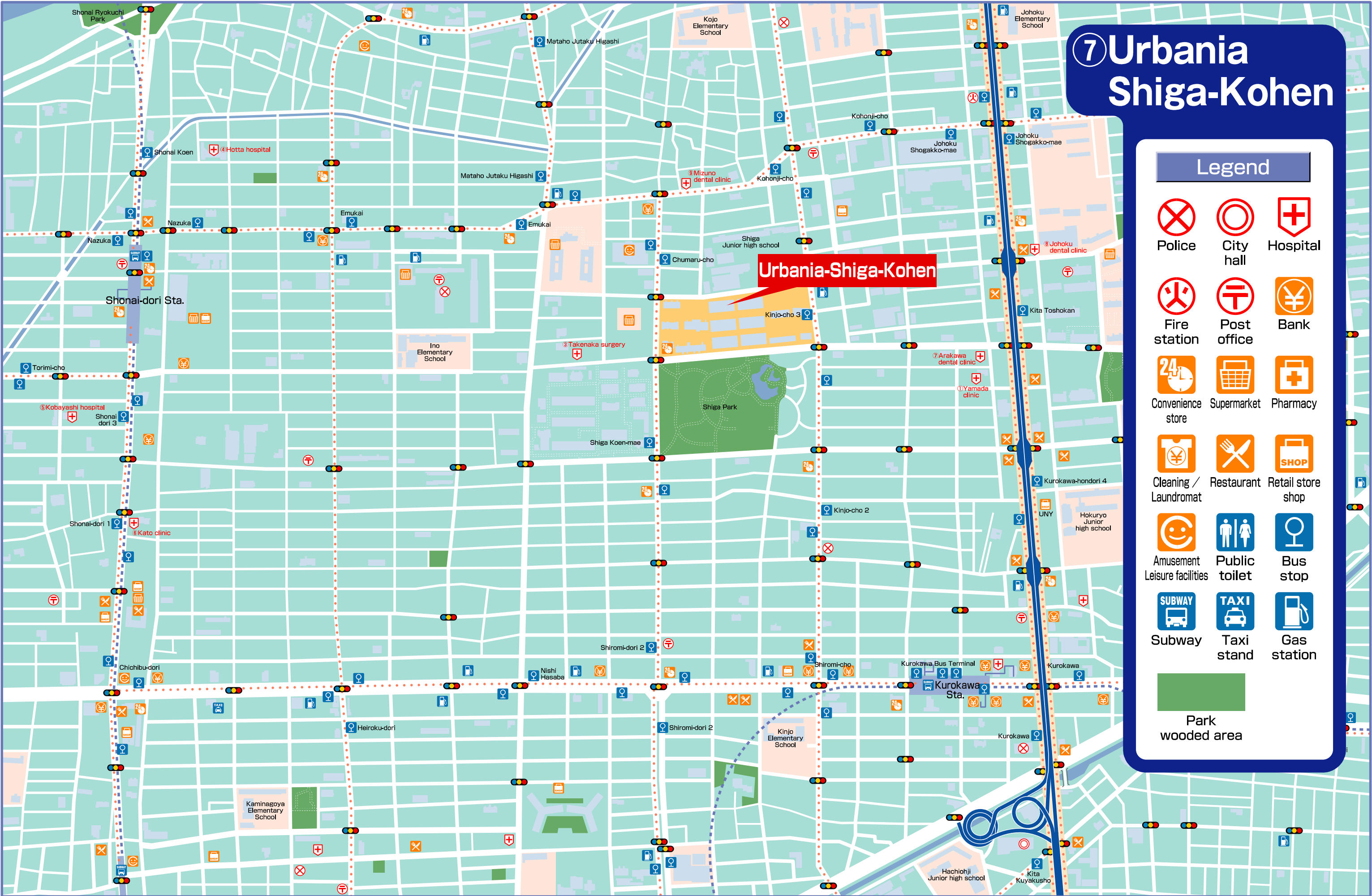
Size : An 11-story building

Room :

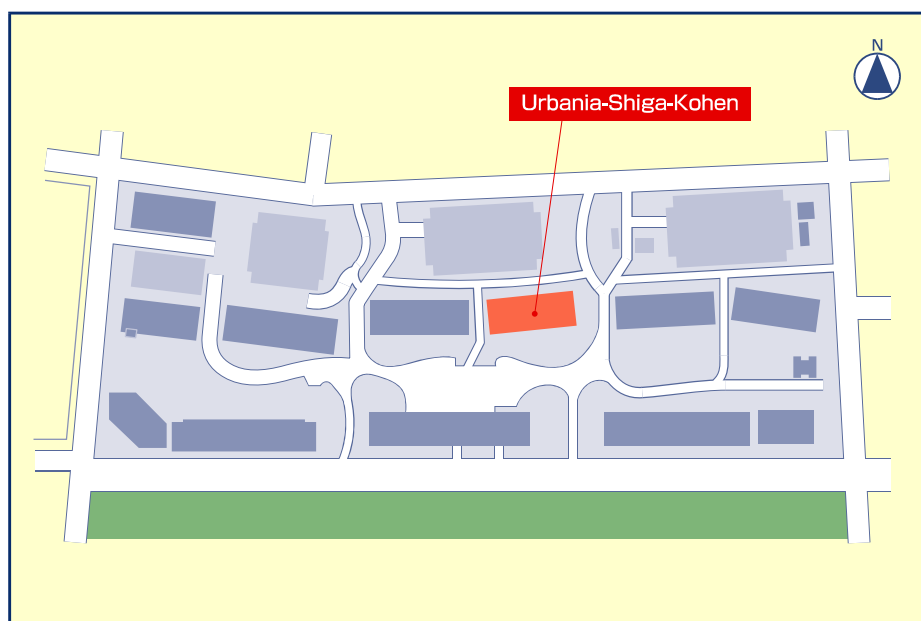
Type of Room	Floor Area (m <sup>2</sup> )	Rental (monthly)	Security Deposit	Parking Fee (monthly)	No. of Units:
1LDK	52	¥85,700	¥244,800		11
2LDK	62-64	¥99,100	¥283,200	¥10,000	44
3LDK	72	¥110,300	¥315,000		19

Equipment: Internet, CATV, automatic lock, elevator

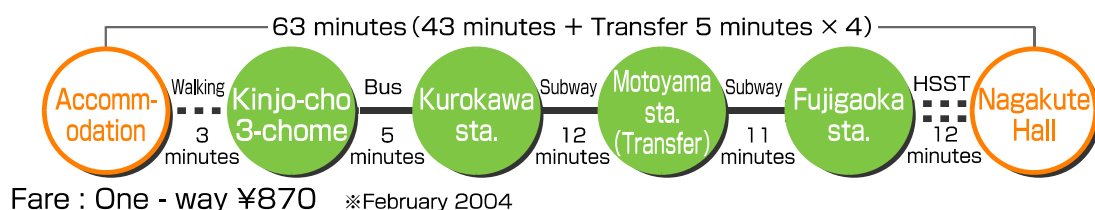
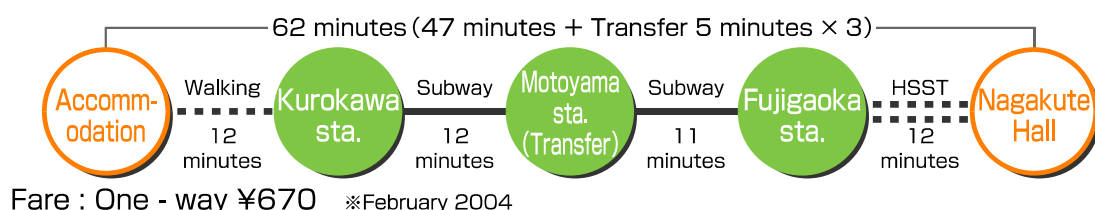
- \* This is public corporation apartment housing located in Kita-ku, Nagoya City.
- \* On the premises of the accommodations, there is a convenience store.
- \* Major facilities in the neighborhood: a large supermarket, health care facilities, banks etc.
- \* Approx. 12-min. walk or 5-min. bus ride (approx. 3-min. walk to nearest bus stop) to Subway Kurokawa Stn.
- \* South of the accommodations is Shiga Park.
- \* During the period of Exhibition, shuttle bus services will be provided between the accommodations and the Exhibition site. (One-way ticket: ¥670)



## ⑦ Urbania-Shiga-Kohen Information



### Traffic routes



### Equipment in residence

Auto lock · Internet · CATV (Cable TV) · Screen door

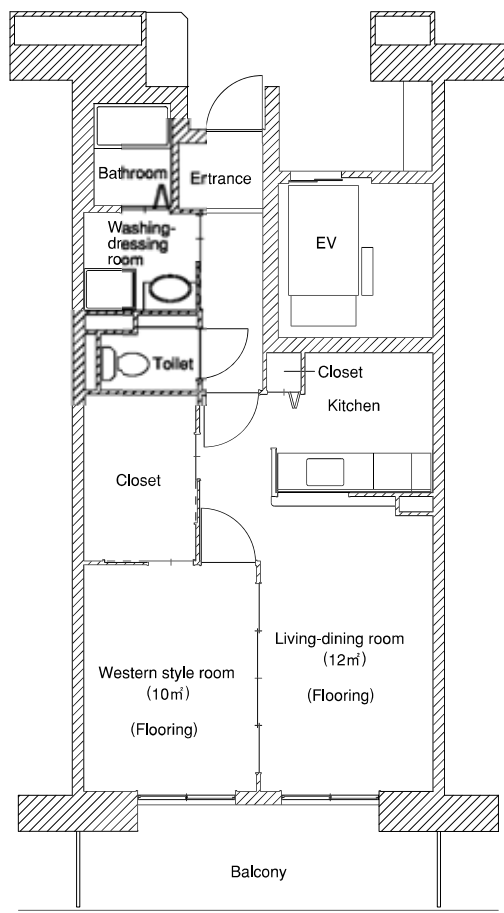
### Medical facilities

- |   |   |
|---|---|
| ① Yamada clinic                         | (Gastroenterology·Surgery)  |
| ② Nagoya City Johoku municipal hospital | (Internal medicine·Surgery·Orthopedics·Ophthalmology·Dermatology·Others)  |
| ③ Takenaka surgery                      | (Digestive organ medicine·Gastroenterology·Circulatory organ medicine·Surgery·Orthopedics·Plastic surgery)            |
| ④ Hotta hospital                        | (Internal medicine·Respiratory organ medicine·Gastroenterology·Circulatory organ medicine·Surgery·Dermatology·Others) |
| ⑤ Kobayashi hospital                    | (Internal medicine·Gastroenterology·Surgery·Dermatology·Proctology)   |
| ⑥ Kato clinic                           | (Internal medicine·Circulatory organ medicine·Pediatrics)   |
| ⑦ Arakawa dental clinic                 | (Dentistry)   |
| ⑧ Johoku dental clinic                  | (Dentistry)   |
| ⑨ Mizuno dental clinic                  | (Dentistry)   |

### Electricity·Gas·Water service Application Offices

Electricity	CHUBU Electric Power Co., Inc. (Kita office)	TEL. 052-740-2200
Gas	TOHO GAS Co., Ltd. (Kita office)	TEL. 052-902-1111
Water service	JS Co., Ltd.	TEL. 052-852-5644
Internet connection service	NTT Media Supply Co., Ltd.	TEL. 0120-795-444 (Free dial)
Cable TV	Starcat Cable Networks Co., Ltd.	TEL. 0120-181-374 (Free dial)

## Urbania-Shiga-Kohen floor plan



Type

1LDK

【Floor area】

52m²

【No. of Units】

11 units

Rent

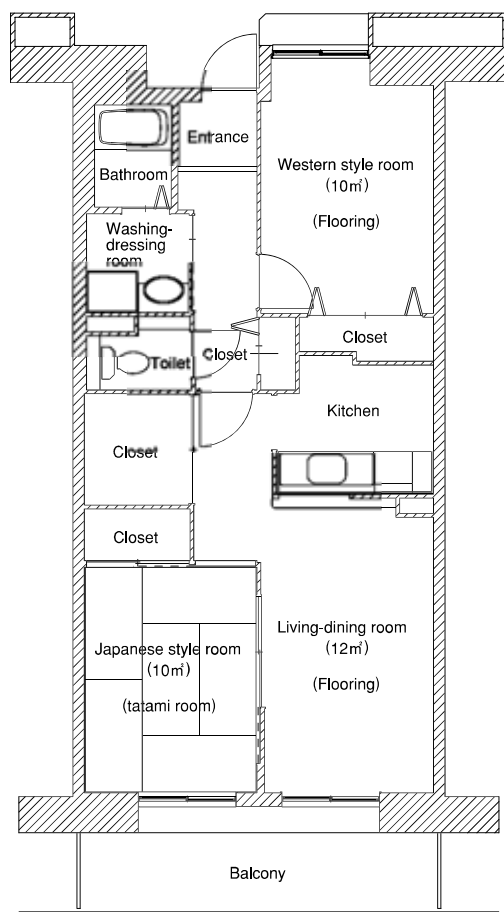
¥85,700-

Security  
Deposit

¥244,800-

Parking  
Fee

¥10,000-



Type

2LDK

【Floor area】

62m²/64m²

【No. of Units】

44 units

Rent

¥99,100-

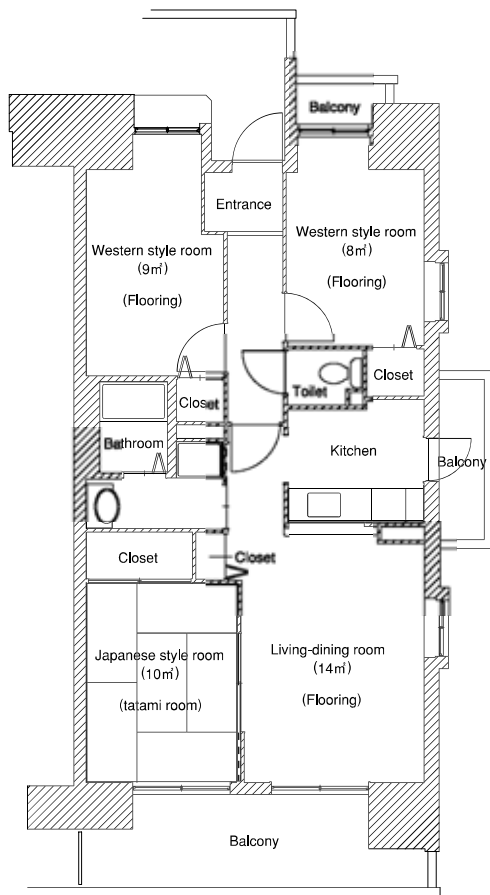
Security  
Deposit

¥283,200-

Parking  
Fee

¥10,000-

## Urbania-Shiga-Kohen floor plan



Type

3LDK

【Floor area】

72m²

【No. of Units】

19 units

Rent

¥110,300-

Security  
Deposit

¥315,000-

Parking  
Fee

¥10,000-

## 8. AOTS Chubu Kenshu Center (Developing Countries eligible for assistance only)

Address : 37-12 Mukaihata, Kaizu-cho, Toyota City, Aichi Prefecture

No. of Units : 150

Structure : Steel-reinforced concrete (SRC)

Size : A four-story building

Room :

Type of Room	Floor Area (m <sup>2</sup> )	Rental (monthly)	Security Deposit	Parking Fee (monthly)	No. of Units:
	17	¥180,000	—	—	150

Equipment: TV, phone, hot-water heater, Internet, desk

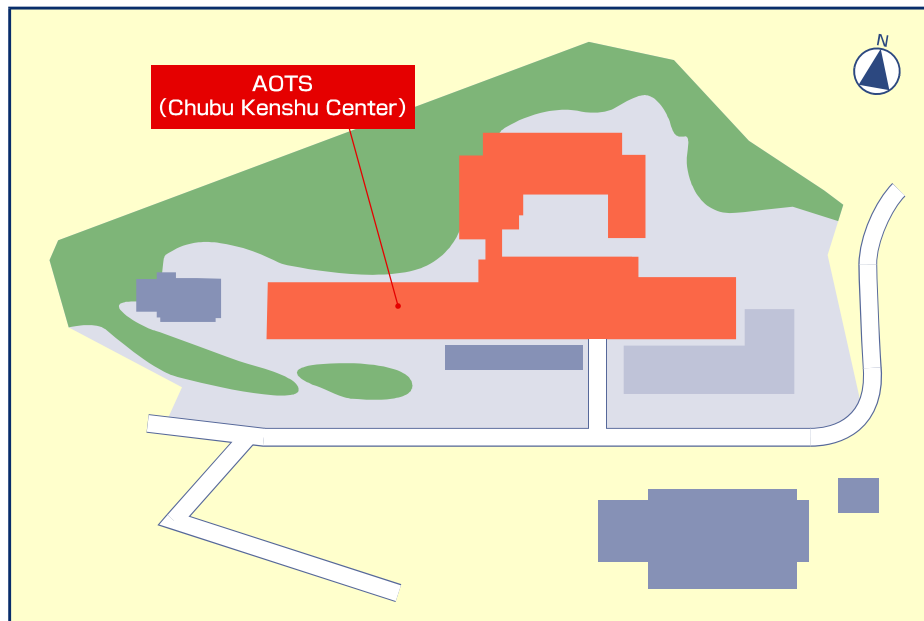
- \* Features hotel-like accommodation and free-of-charge facilities: tennis courts, gym, party room, PC room, launderette, video library
- \* Approx. 10-min. walk to Aikan Line Kaizu Stn.
- \* If a resident becomes sick, center personnel will take him/her to hospital.
- \* Mini-coach transportation service is provided for commuting and shopping.
- \* There is a large buffet-style restaurant: breakfast (¥600), lunch (¥800), dinner (¥1,300)
- \* The Center is mainly for participants from developing countries eligible for assistance. To use the Center between March 1 and September 30, please submit an application form attached to the Guideline for Assistance to Developing Countries, which will be provided in due course. For use at other times than the above, submit the Accommodation Application Form (Page 7) attached to these Guidelines.
- \* If there is any vacancy between October 2004 and February 2005, the Center will be used for participants from nations other than those eligible for assistance.



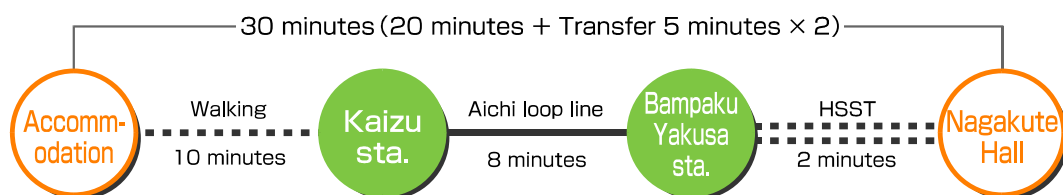




## ⑧ AOTS (Chubu Kenshu Center) Information



### Traffic route



Fare : One - way ¥470 ※February 2004

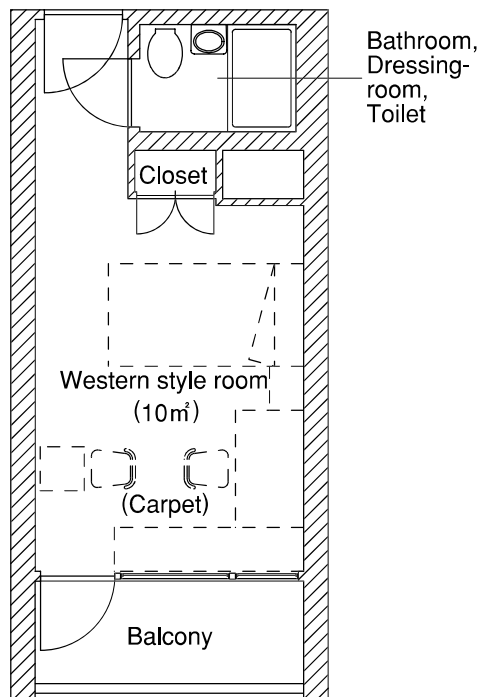
### Equipment in residence

TV · Internet · Furniture · Buffet-style Restaurant

### Medical facilities

- |                         |  |
|-------------------------|--|
| ① Toyotanishi hospital  | (Internal medicine · Psychiatry · Neurology)                       |
| ② Saito hospital        | (Internal medicine · Surgery · Orthopedics · Dermatology · Others) |
| ③ Masuda dental clinic  | (Dentistry)  |
| ④ Shimizu dental clinic | (Dentistry)  |

# AOTS (Chubu Kenshu Center) floor plan



※ Television, desk, bed, table, shelf and telephon are prepared.

## Type

【Floor area】

17m²

【No. of Units】

150 units

Rent

¥180,000-

Security  
Deposit

¥0-

Parking  
Fee

## Tenancy Agreement

In connection with the 2005 World Exposition, Aichi Japan (“the Exhibition”), to be held from March 25, 2005 to September 25, 2005, this agreement is made and entered into by and between the Government of \_\_\_\_\_, represented by \_\_\_\_\_, Commissioner General of Section (“the Participant”), which has expressed its intention to participate in the Exhibition in reply to the invitation of the Government of Japan, on the one hand, and the Japan Association for the 2005 World Exposition (“the Organizer”), represented by \_\_\_\_\_, Chairman of the Organizer, on the other hand, regarding an accommodation (“Accommodation”) that the Organizer rents from \_\_\_\_\_ (“the Landlord”).

It is hereby agreed as follows:

### Article 1: Rental of Accommodation

1. The Organizer shall rent to the Participant the Accommodation specified in the Appendix section relating to Accommodation.
2. The Participant shall temporarily use said Accommodation for the purpose of participating in the Exhibition.
3. Personnel of the national Section of the Participant (“Personnel”) in the Exhibition shall be permitted by the Participant to use the Accommodation, subject to the terms and conditions hereinafter set forth. The Participant shall not allow any persons other than Personnel to use the Accommodation.

### Article 2: Rental Period

1. The Accommodation term of rental (“Rental Period”) shall be as specified in the Appendix section relating to Rental Period of Accommodation, and shall not be renewed upon expiration.
2. The Organizer shall deliver possession of the Accommodation to the Participant on the first day of the Rental Period (“Commencement Date”) stipulated in the

preceding paragraph.

#### Article 3: Rent

The monthly rent of the Accommodation shall be as specified in the Appendix section relating to rent of Accommodation.

#### Article 4: Security Deposit

1. As security deposit for remedying any rent payment default by the Participant, and to compensate for any damage to the rented Accommodation and/or other liabilities arising from execution of this agreement, the Participant shall pay to the Organizer the sum of money specified in the Appendix section relating to security deposit.
2. Within thirty (30) days after the date of Rental Period expiration or termination (“Termination Date”) of this agreement in accordance with the provisions of Article 13, the Organizer, after liquidating any of Participant’s liabilities to the Organizer arising from use of the Accommodation, shall return to the Participant the balance of the security deposit. In such case, the security deposit shall not carry any interest.

#### Article 5: Obligation of Rent Payment

1. The Participant shall be liable for the rent on the Commencement Date of the Rental Period, as stipulated in Paragraph 1 of Article 2.
2. If the Participant rents the Accommodation for less than one month in a month that includes Commencement Date or Termination Date, the rent shall be calculated on a prorated daily basis and rounded off to the nearest 10 yen.

#### Article 6: Due Date for Rent Payment

1. The Participant shall pay the rents for the months stipulated in Paragraph 2 of the preceding article, and the rents for other months, no later than the due dates stipulated in Paragraph 2 hereof, by transfer to the bank account designated by

the Organizer.

2. The rents as stipulated in the preceding paragraph, payable in advance, shall be paid in accordance with the following payment schedule:
  - a. Rent for the period from Commencement Date through March 31, 2005: Date designated by the Organizer
  - b. Rent for the period from April 1, 2005 through June 30 of the same year: March 31 of the same year
  - c. Rent for the period from July 1, 2005 through October 31 of the same year: June 30 of the same year

#### Article 7: Payment of Additional Fees

1. If the Participant uses rental furniture provided by the Organizer in the Accommodation, the Participant shall apply for installation of such furniture using an application form designated by the Organizer.
2. If the Participant uses rental furniture pursuant to the preceding paragraph, the Participant shall pay the sum of money specified in the Appendix section relating to rental furniture fee, and the rent specified in the preceding article, no later than due dates designated by the Organizer.
3. If the Participant uses a parking lot on the premises of the apartment complex in which the Accommodation is located, the Participant shall submit, in advance, an application form designated by the Organizer, and shall obtain approval therefor.
4. The preceding paragraph pertaining, the Participant shall pay to the Organizer the parking fee set by the manager of the parking lot, who is neither of the parties hereto.

#### Article 8: Utilities and Other Costs

The Participant shall be responsible for paying the following utility charges and costs arising from use of the Accommodation by Personnel, in addition to the rent stipulated in Article 3 and the additional fees stipulated in the preceding article:

- a. Water supply and sewerage rate, including basic rate

- b. Electricity rate, including basic rate
- c. Gas rate, including basic rate
- d. If using a telephone, cost of installation of telephone and telephone bill, including basic rate
- e. All other costs arising from use of the Accommodation by Personnel

#### Article 9: Obligation regarding Good Maintenance

The Participant shall keep the Accommodation in good order and repair as a good caretaker, pursuant to the provisions of this agreement and the instructions of the Organizer.

#### Article 10: Rules

1. Before the Personnel move into the Accommodation, the Participant shall submit to the Organizer a list of names of said Personnel, using a form designated by the Organizer. The Participant and Personnel shall consent to submit a copy of the list of names to the Landlord, in relation to management of the Accommodation. The Landlord shall keep the aforementioned copy only for the purpose of managing the Accommodation, and shall not use the list for other purpose or divulge the information thereof.
2. The Participant shall have Personnel observe the following rules:
  - a. There shall be no alterations, renovations or extensions to the Accommodation.
  - b. No structure shall be installed on the premises of the apartment complex in which the Accommodation is located.
  - c. Neither all nor any part of the Accommodation shall be used for any purposes other than private residence.
  - d. Neither all nor any part of the Accommodation shall be sublet to any person other than Personnel.
  - e. No persons other than Personnel shall be allowed to live with the Personnel in the Accommodation.

- f. No animals or pets, other than small birds or fish, shall be kept in the Accommodation or on the premises of the apartment complex in which the Accommodation is located.
- g. There shall be no activity that could disturb the peace and order of the community life.
- h. Personnel shall follow the instructions the Organizer deems necessary for managing the Accommodation.

#### Article 11: Demand to Vacate

If Personnel violate any of the rules listed in Paragraph 2 of the preceding article, the Organizer may call upon the Participant to have said Personnel vacate the Accommodation.

#### Article 12: Obligation to Repair

If the Organizer deems it necessary to repair damage to the Accommodation or any of the installations or appliances incidental thereto, such repair shall be done at the Organizer's own expense; provided, however, that Personnel shall bear the cost of damage repair to the extent to which they are responsible for such damage.

#### Article 13: Termination of Agreement

1. If the Organizer concludes that the Participant or Personnel have violated any of the provisions of Paragraph 3 of Article 1; Article 6; Paragraph 2 of Article 7; Article 8; Article 9 and/or Paragraph 2 of Article 10, and that said violation could be significantly detrimental to the use or management of the Accommodation, the Organizer may terminate this agreement upon thirty (30) days' (or more) notice.
2. Termination of the agreement as per the preceding paragraph shall take effect on the date of expiration of the period of notice, except when the violation has been corrected within the period of notice.
3. If the Participant wishes to terminate this agreement before expiration of the Rental Period, the Participant shall submit the cancellation notification

designated by the Organizer, giving a notice period of fourteen (14) days or more. In such case, this agreement will be terminated on the termination date specified in the cancellation notification.

#### Article 14: Vacating Accommodation

1. The Participant shall return the Accommodation to the Organizer by the date of Rental Period expiration, or immediately upon termination of this agreement pursuant to Paragraph 2 of the preceding article.
2. The preceding paragraph pertaining, the Participant shall promptly vacate and restore the Accommodation to its original condition, at the Participant's expense.

#### Article 15: Compensation Claim

The Participant or the Organizer shall reserve the right to make a claim against the other party for any damage caused by the other party's breach of this agreement.

#### Article 16: Currency of Payment

All monies paid in connection with this agreement shall be paid in Japanese currency.

#### Article 17: Governing Law

This agreement shall be governed by the laws of Japan.

#### Article 18: Matters Not Provided for Herein

If any doubtful point arises regarding this agreement, or any matters arise that are not provided for herein, the Participant and the Organizer shall settle such issues after due consultation in good faith.

#### Article 19: Communications and Notices

1. All communications and notices required in connection with this agreement shall be in writing, and shall become effective when actually received by the other party.



2. Communications and notices as specified in the preceding paragraph shall be sent to the respective parties hereto at the following addresses:

[Address of the Participant]

[Address of the Organizer]

Japan Association for the 2005 World Exposition

Nagoya Daiya II Bldg. 4F, 3-15-1 Meieki, Nakamura-ku, Nagoya City, Aichi

450-0002 Japan

3. Either party hereto may change the addresses specified in the preceding paragraph upon notification of the other party regarding such change.

In witness whereof, the parties hereto have caused this agreement to be executed by their duly authorized representatives in English and Japanese versions, each in duplicate, each party to retain one (1) copy of both.

MM DD, 200X

Participant

Japan Association for the 2005 World Exposition

TOYODA Shoichiro

Chairman

(Appendix)

Description, and Conditions of Rental, of Accommodation Rented to Participant by Organizer under This Agreement

1. Location and name of accommodation

2. Type of accommodation

3. Building and room numbers

4. Accommodation rental period

From MM DD, YYYY to MM DD, YYYY

5. Monthly rent

yen per accommodation

6. Security deposit

yen

7. Optional furniture rental fee

yen

8. Monthly parking fee

yen per accommodation

This work was subsidized by Japan Motorcycle Racing Organization through its promotion funds from AUTORACE.