

GL4-1-1

"Design Guidelines on Modular Buildings for Official Participants" (Supplement)

1. Basic Concept

The Japan Association for the 2005 World Exposition (hereinafter referred to as the “Organizer”) in August 2003 provided official participants (hereinafter referred to as the “Participant”) with GL4-1 “Design Guidelines on Modular Buildings for Official Participants.” However, some Participants have requested that the Organizer allow exhibition plans requiring decoration and related changes/alterations not stipulated in those Guidelines.

To ensure greater flexibility in Participant planning for exhibition, which is the mainstay of the 2005 World Exposition, Aichi, Japan (hereinafter referred to as the “Exhibition”), the Organizer has decided to provide supplementary guidelines to GL4-1 “Design Guidelines on Modular Buildings for Official Participants.”

2. Preconditions

- (1) The Participant must comply with items 1 and 2 of Section III in GL4-1 “Design Guidelines on Modular Buildings for Official Participants.” (See attachment.)
- (2) In addition to the preceding item (1), the following requirements on construction work must be satisfied:
 - 1) Visitor traffic and evacuation must not be hindered.
 - 2) In structural terms, safety must not be hindered.
 - 3) The placement of facilities in Global Commons must not be hindered.
 - 4) The functions of equipment installed in Global Commons must not be hindered.
 - 5) The total configuration/atmosphere of the Exhibition must not be seriously affected.

3. Range of Decoration and Related Changes/Alterations to Modular Building Exterior

- (1) The range of decoration and related changes/alterations specified in current guidelines GL4-1.

The upper part of canopy on the facade (“A” in below illustrations)

- (2) Newly added range of decoration and related changes/alterations

1) The lower part of canopy on the facade (“B” in below illustrations)

2) Modular building exterior other than the facade (“C” in below illustrations)

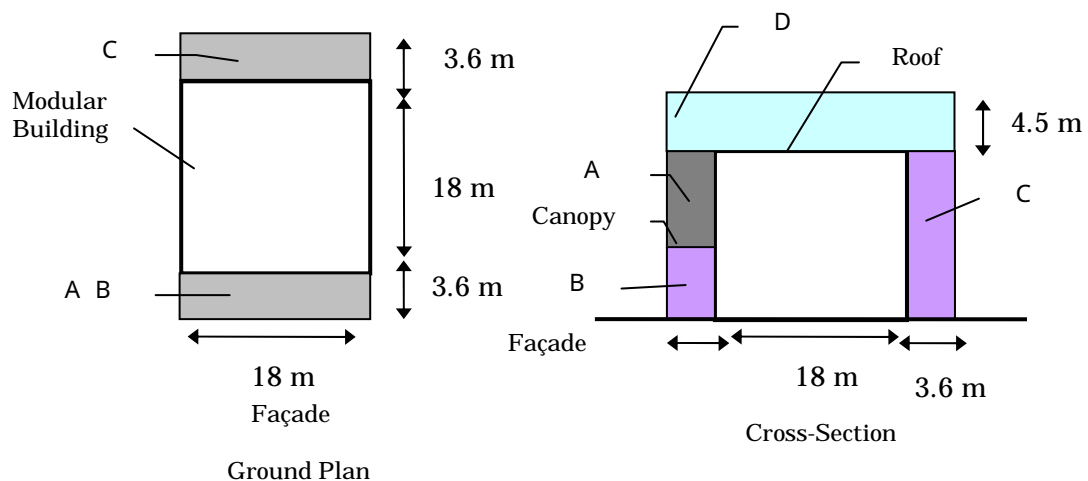
* ‘Exterior’ as used here means the side and back faces of modular buildings.

* Decorations and related changes/alterations are only permissible on one such face for each module. (Each face is 18m width.)

* Decoration must be no further than 3.6 m from the column center and requires consultation with the Organizer.

3) Space on the rooftops of modular buildings (“D” in below illustrations)

The illustrations below are examples of 2): changes made to the back of a one-module building.



4. Restrictions on Construction Work

- (1) When a room, balcony or other structure is constructed in the upper or lower part (“A” or “B” in above illustrations) of the canopy on the facade, the total floor area of the newly constructed structure and mezzanine must be 50% or less of the allocated area. The floor area calculation method is based on the Building Standard Law of Japan.
- (2) The lower part of the canopy on the facade (“B” in above illustrations) is designed for use as space for visitors in waiting lines. If any construction is carried out that might hinder such function, lost space must be compensated for by securing an equivalent-sized waiting space in an area other than in front of the facade (“C” in above illustrations) or inside modular buildings. The waiting space must have a roof or canopy.

If such alternative construction is conducted, the existing canopy can be removed.

- (3) As a rule, only decoration is allowed for the exterior, other than the facade, of modular buildings (“C” in above illustrations). No construction work involving excavation will be allowed. For the sake of evacuation, the road must be 1.5 m or more in width.
- (4) The use of space on the rooftops of modular buildings (“D” in above illustrations) will be allowed only for minimal installation of facilities essential to the Participant’s exhibition (e.g. overhead clearance for an elevator); rooftop space cannot be used as a floor.

Provided, however, that the area of rooftop space used as above must not exceed one-eighth the total allocated area, and the height of such use from the rooftop must be 4.5 m or less.

Attachment

GL4-1 Design Guidelines on Modular Buildings for Official Participants (Excerpts)

III. Restrictions on Construction Work

1. In principle, the Participant must not perform any construction work that might hinder functions of modular buildings, facilities, and fixtures provided by the Organizer, including windows required by regulations and control panels. If such construction work is unavoidable, however, the Participant must take remedial action at its own expense.
2. The following requirements must be satisfied when modular buildings provided by the Organizer are changed/alterd.
 - (1) Japanese laws, ordinances and various standards must be strictly observed.
 - (2) Changes/alterations in the structure of the modular building itself are not allowed.
 - (3) Changes/alterations that affect the Organizer's construction schedule of modular buildings shall be prohibited.
 - (4) Consultations regarding changes/alterations are to be held thoroughly and in advance with the Organizer, and the approval of the Organizer must be obtained.
 - (5) The Participant is to bear all expenses incurred in changes/alterations (for everything including design and work execution, as well as dismantling and removal).
 - (6) The responsibility pertaining to design and execution of changes/alterations lies with the Participant.