

7,000 Events, Including Live Performances and Shows

◆ 185 Performance Circuits

When Everyday throughout the Expo period

Where Mainly in the Global Loop and Global Commons

The Global Loop will be the venue for "Sol ban ban" parades featuring musicians and performers. Leading overseas performers will demonstrate their talents in the Global Commons.



Sol ban ban - A moving festival of energy and rhythm

◆ Creating the Culture of the Future "Harmony" - A Musical Fantasy

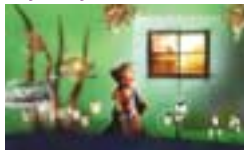
When Sunday May 1 ~ Sunday May 8

Where EXPO Hall

This is the story of a young boy named Doctor Shin who travels the world curing the Earth's disease and pain. Based on audience participation, this puppet musical was written especially for EXPO 2005.

Top: In Doctor Shin's medical clinic (designer's rendering)

Bottom: Doctor Shin and Koh the pelican travel the world to heal the Earth.



Visitors should also look out for the various events taking place throughout the Expo site, especially in the EXPO Dome, EXPO Hall, and EXPO Plaza. In addition to daily events, be sure to check for special events that are presented only on particular days.

◆ Global Harmony Concert - World Prayers

When Sunday, April 17 and Monday, April 18

Where EXPO Dome

This concert will feature music on the theme of prayer, including Buddhist, Christian, and Islamic music. Audiences are certain to be caught up in the emotion of prayer music from throughout the world.



Performers will include the Born Again Church Choir.

◆ Creating the Culture of the Future - Live! Okuni

When Wednesday, May 4 ~ Friday, May 6

Where EXPO Dome

This special live version of the hit musical *Okuni* will be presented on the giant stage in the EXPO Dome. *Okuni* is an energetic stage experience with the emphasis on song and dance.

Top: Nana Kinomi in the title role of *Okuni*

Bottom: Music performed during the show by Shang Shang Typhoon adds excitement to the story.



Citizens are the Prime Movers of the 21st century

States were the main actors in the nineteenth century, and in the twentieth century industry and economics came to play leading roles as well. Added to the mix in the twenty-first century will be the power of citizens, and it is this power that will drive the next century.

Nagakute Area For the first time in Expo history - A global village for NPOs and NGOs

◆ NGO Global Village

In the hope of creating a sustainable future, nonprofit and nongovernmental organizations worldwide are engaging in activities to protect nature and the environment and to promote international exchange and cooperation. Visitors can participate in these activities and enjoy learning through the experience.



Orientation Zone (Center House)

Visitors enter the Center House via the Approach Tunnel—a work of art in the shape of the tunnel. Once inside, they will find a sky screen theater in which the audience lies on the floor. There are also information facilities, including booths introducing all participating organizations.

Experience and Exchange Zone (Outdoor Plaza)

Pavilion

This is the main space for NPO/NGO exhibits in the NGO Global Village.

Workshop Hall

This exciting workshop area is available those who have applied to participate.

Earth Square

This area will be used to present exciting performances of songs and dances from throughout the world.

Asian Tea Hall & Japanese Tea Hall

Visitors will be able to enjoy interaction while various products, including tea made with leaves harvested from the Expo Tea Fields.

Tea Fields

This area features actual tea plants that will be harvested several times during the Expo period.

Organic Garden

This garden will be a case study for sustainable agriculture.

Natural Food Cafe

This facility will serve delicious and healthy natural food.



◆ Kaisho Plaza

The clay wall and mosaics that adorn this area were created primarily through community efforts. Visitors can also enjoy unique art objects, as well as the various outdoor exhibits, events, and workshops that make up the Citizen's Grand Intercultural Symphony Festival. Visitors are encouraged to participate in the workshops.



◆ Citizens' Pavilion

The Dialogue Theater on the first floor will be the venue for daily talk shows and forums based on citizen participation. Topics will range from grass-roots activities to global initiatives. The Dialogue Gallery on the second floor will be used for "Earth Classroom" workshops presented mainly by NPOs and NGOs. Visitors will be able to participate in these events.



◆ Welcome House

Visitors to this facility will learn about the natural environment of the Kaisho forest, which was the starting point for EXPO 2005. With facilities that include a community broadcast station operated by volunteers, Welcome House will be the center for information distribution.



Major Participatory Projects

Our goal is to weave 2,005 meters with the participants!



1 Come, Join Us and Enjoy "Communication Through Weaving and Dyeing"

Mahatma Gandhi expressed independence and peace by spinning thread. We invite participants to try their hand at saori weaving and plant dyeing and rediscover the importance of a rich sensitivity. Fashion shows are planned as well.

2 Electric Vehicles of the World Join Together!

Electric vehicles are environmentally friendly, as they do not emit any carbon dioxide or other pollutants. EVs of the world will be exhibited, and visitors can ride them, too. Come take a glimpse at the future relationship between cars and human life.

3 Providing Street Children with Education Opportunities.

What can Japanese mothers offer to children in developing countries who cannot go to school? Not money, not material assistance, but handmade picture books filled with love. May these books give hope and strength to the children.

Citizens' Projects Many more projects are being planned by citizens, including the following:

★Sea Lovers Unite!

★Imagine Concert

★Looking Afar-People of the World Playing in Outer Space

★Come Back, Thrustles!-Spinning Machines Free of Hazardous Emissions

★Memories Celebrating Time

★Thinking About "Forest Regeneration" Through Wood Carving

★Global Children's Interaction Project

★Effective Use of Rainwater to Save the Earth

※These are just a few examples of the public participation projects.

Hospitality and a can-do spirit make everyone happy.

◆ EXPO 2005 Volunteer Center

Volunteer activities at EXPO 2005 will be aimed at giving satisfaction both to visitors and to the volunteers themselves. Whether their job is guiding visitors, interpreting, environmental activities, or welfare support, everyone will think and act on their initiative and responsibility.

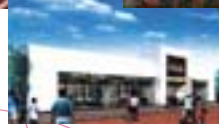
Earth-friendly deals: Bring ecopoints to EXPO 2005

◆ EXPO Eco Points

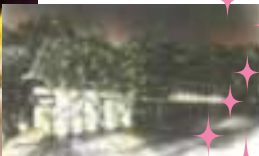
By using your own bag instead of a plastic bag when shopping, for instance, you can earn EXPO Eco Points. These points can be exchanged for eco goods and other perks. Make this your starting point for an Earth-friendly lifestyle.



Satisfy the Stomach and the Five Senses: It's Food Entertainment



EXPO GOURMET



※The pictures above are artists' renditions.

Japanese, Chinese, French and More: Global Cuisines Converge at EXPO 2005

QUEEN ALICE AQUA

Run by the original Iron Chef Yutaka Ishinabe, the restaurant will serve healthy and wholesome French cuisine made with fine local ingredients.

KOREAN RESTAURANT KANICHITEI

The restaurant will feature traditional Korean food from kimchi to galbi (grilled rib), as well as flashy live performances of Nanta, in which kitchen utensils turn into instruments.

Japanese Restaurant NADAMAN

Established in 1830, Nadaman has served Japanese haute cuisine for 170 years. The dishes, cooked in true traditional style with utmost attention to the natural flavor of the ingredients, are simply exquisite.

Restaurant Beer-Hall

The Beer-Hall will be modeled on the German beer festival known as Oktoberfest. Indulge in German food with beer in hand and enjoy live performances of German folk music.

PIEROH'S WINE OF THE WORLD

Wines directly imported from around the world and food to match the wines can be enjoyed at the food court. There will also be a wine tasting area.

KAGURAZAKA TURKISH RESTAURANT SOFRA

Watch belly dances performed by women in dazzling costumes while savoring traditional Turkish imperial cuisine and home-style food.

Festival FOOD COURT

Everything from local Aichi specialties to international dishes will be available. Aichi's misokatsu, pork cutlets eaten with a miso-based sauce, will go out to the world from here.

ASAHI PANORAMA RESTAURANT

At the view restaurant, guests can watch the romantic evening event at Koi Pond while having dinner or take in the sights of the pond and surrounding nature over lunch.

※In addition, there will be a variety of restaurants run by participating countries in the Global Commons.

Hotel Okura Chinese Cuisine Toh-Ka-Lin

The famed restaurant specializing in Cantonese cuisine employs various cooking techniques cultivated over the four millennia of Chinese history to offer up delicate, lightly seasoned dishes.

Kaku-Sushi shop

Conveyor-belt sushi is widely popular in Japan today. The restaurant will introduce this new aspect of Japan's culinary culture to visitors from all over the world.

World Restaurant

This food court offers a wide selection of food from around the world.

◆ Other Shops

Name	Location	Description
Ristorante Dolce Italia	Global Common 3	For a total Italian experience, local chefs prepare representative dishes from each region using authentic Italian ingredients.
BUFFET NAGAKUTE	Corporate Pavilion Zone A	Local Nagoya delicacies, including miso cutlets, kishimen, and hitsumabushi, are served buffet style.
Curry Shop CHITAKA	Corporate Pavilion Zone B	For curry connoisseurs - Select your own combination of sauces and toppings.
Yokohama China Town Festival HANKEI	Global Common 1	Visitors can enjoy meat buns, ramen, dim sum, and other delicacies from Yokohama.
MERHABA	Global Common 2	MERHABA offers an easy and delicious introduction to Turkish food, including doner kebabs and stretchy ice cream.
Food Space Label Art 101	Interactive Fun Zone	This restaurant offers an art area run by volunteers from the University of Tokyo.
Japanese Cake Shop	North Gate	Three long-established companies have joined forces to offer an introduction to the traditions and techniques of Japanese cake making.
TASAKI SHINJU	Global Common 2	This shop sells pearls and jewelry.
MIZUKI SHIGERU NO GECEGE NO MORI	Fun Zone	Ghostly goods from Asia and elsewhere are on sale in this shop.
Circle K	Corporate Pavilion Zone A	Environment-friendly features of this convenience store include the use of natural, ecologically sound materials. It offers an exclusive range of health-oriented products.
Family Mart	Global Common 1	This innovative convenience store is located in the Asia Common.
SUNKUS	West Gate	Visit this convenience store to enjoy excellent customer service and an exciting product range.
Pocket Combi	Seto Area Gate	This is an innovative convenience store with the accent on health and calorie control.
FUJI FILM Photo Service Station	Interactive Fun Zone	In addition to sales of film and photographic products, this service counter also provides processing, battery replacement, and other services.

ECOVIEW

Biomass Tableware



The tableware that will be used at the food courts and other facilities are Earth-friendly utensils made mainly of biomass, derived from

plants and other recyclable organic matter. After disposal, microorganisms will break them down into water and carbon dioxide

within a short period. Thus, the utensils hold the potential to reduce waste and to help realize a society that does not rely on fuel.