

July 17, 2003

Contact:
Ayumi OKAMOTO
Public Relations and Advertising Group
E-mail: okamotoa@expo2005.or.jp

Bringing a Perfectly Intact Mammoth to EXPO 2005 AICHI, JAPAN: Mammoth Excavation and Exhibition Organizing Committee Launched, Survey Team to Head to Russia in August

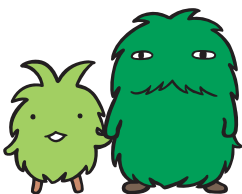
The Japan Association for the 2005 World Exposition has been considering excavating the remains of a mammoth, an animal believed to have become extinct between 7,000 and 8,000 years ago, from the permafrost in Siberia and making it a featured exhibition at EXPO 2005. Today these plans come to fruition with the launch of the Mammoth Excavation and Exhibition Organizing Committee, which will be the parent organization that will promote this effort. The organizational structure and future schedules have been decided upon, and a survey team will be put together and dispatched in early August for the purpose of selecting a location.

As it was a large mammal that coexisted with humans during the Ice Age, the mammoth can be said to be a precious inheritance of the Earth. While a large number of partial specimens have been excavated through the efforts of survey teams from around the world in the past, regrettably a perfectly intact specimen has yet to be discovered.

If a completely intact frozen mammoth can be successfully excavated and displayed exactly the way it existed thousands of years ago, this will of course greatly impress visitors to EXPO 2005. But more than that, it is believed that doing so will make a major contribution to the future study of extinct animals and the process of bringing them back.

The organizational structure, schedule, and plan to dispatch the survey teams are as follows:

1. Organizational structure: Refer to attachment 1
2. Schedule: Refer to attachment 2



**Japan Association for
the 2005 World Exposition**

Tokyo Office
Iino Bldg 7F, 2-1-1 Uchisaiwai-cho
Chiyoda-ku, Tokyo 100-0011, Japan
Tel. +81-3-5521-1620 Fax. +81-3-5521-1607
URL : <http://www.expo2005.or.jp/en/top/>

3. Plan for survey teams

A) Time frame of dispatch (tentative):

First survey – For approximately one month beginning in early August 2003

Second survey – For approximately one month beginning in early September 2003

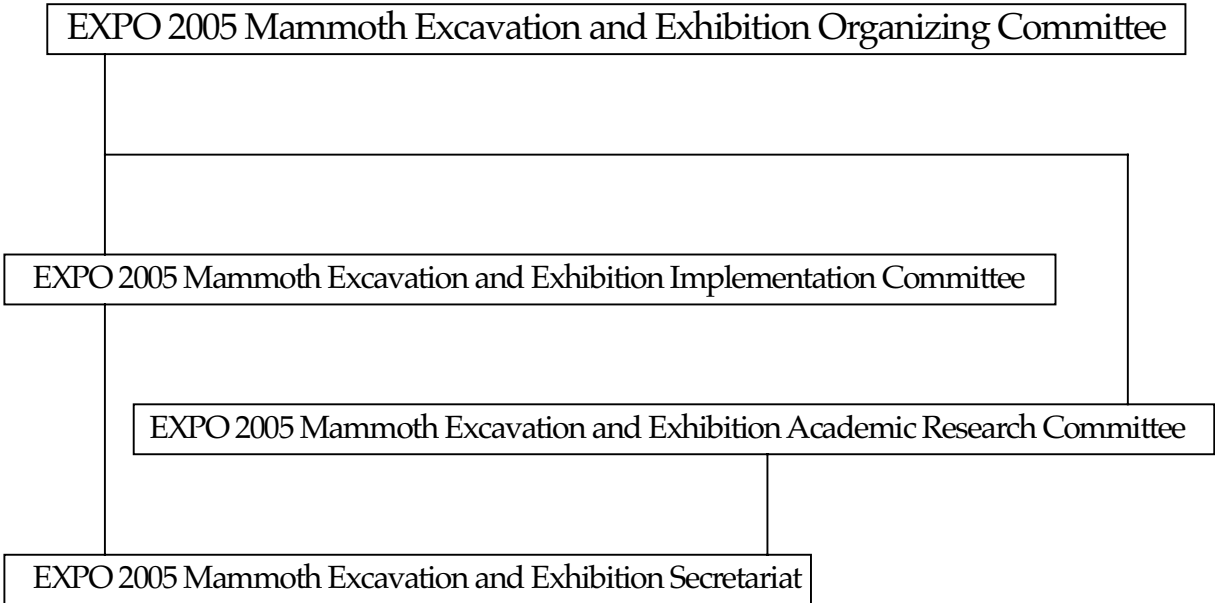
B) Area of survey: Khatanga and Yakutsk (refer to attachment 3)

Depending on the results obtained by the first survey, Magadan may be added to the list of candidate sites.

C) Members of the survey teams: Takeshi Matsuda, Shigeru Taguchi, and Hidemaro Korenaga, members of the Mammoth Excavation and Exhibition Implementation Committee.

- Depending on the results obtained by the first survey, additions and alterations may be made to the second survey team.

**Overview of Organizational Structure for EXPO 2005
Mammoth Excavation and Exhibition Project**



Members of EXPO 2005 Mammoth Excavation and Exhibition Project

1. EXPO 2005 Mammoth Excavation and Exhibition Organizing Committee

Honorary Chairman

Akito Arima, Chairman of the Japan Science Foundation

Chairman

Shinji Fukukawa, Chairman of the Japan Association for Creative Events

Members

Toshio Nakamura, Vice Secretary-General of the Japan Association for the 2005 World Exposition

Naoki Suzuki, Professor, the Tokyo Jikei University School of Medicine (Chairman of EXPO 2005 Mammoth Excavation and Exhibition Academic Research Committee)

Akio Etori, Professor, Edogawa University; Vice Director of the Science Museum, Tokyo (Chairman of EXPO 2005 Mammoth Excavation and Exhibition Implementation Committee)

Haruhiko Akemine, President of Force Corp.

Takeshi Matsuda, President of Nature Network Co., Ltd.

Hiromitsu Taira, General Manager of Nippon Express Co., Ltd.

- Additional members will be brought in from cooperating corporations and organizations.

Advisers

Takashi Hamada, Chairman of the Japan Science Society

Jiro Ota, Chairman of Edogawa University

Shigenori Ikemoto, Chairman of Nippon Veterinary and Animal Science University

2. EXPO 2005 Mammoth Excavation and Exhibition Secretariat

Imperial Tower 13F, 1-1-1 Uchisaiwai-cho Chiyoda-ku, Tokyo 100-0011, Japan
c/o Technova Inc.

Tel. 81-3-3508-4805

Secretary-General

Hori Takanobu, President of Technova Inc.

- Operations will be undertaken with the cooperation of the Japan Science Foundation.

3. EXPO 2005 Mammoth Excavation and Exhibition Academic Research Committee

Chairman

Naoki Suzuki, Professor of the Tokyo Jikei University School of Medicine

Members

- Members are under considerations.

Advisers

Haruhiko Akemine, President of Force Corp.

4. EXPO 2005 Mammoth Excavation and Exhibition Implementation Committee

Chairman

Akio Etori, Professor of Edogawa University; Vice Director of the Science Museum, Tokyo

Members

Takashi Honjo, Director-General of Management and Administration Office, Japan Association for the 2005 World Exposition

Takeshi Matsuda, President of Nature Network Co., Ltd.

Shigeru Taguchi, Producer of World Staff Co., Ltd.

Hidemaro Korenaga, Producer of World Staff Co., Ltd.

Kotaro Wada, Director of Nature Network Co., Ltd.

Kazuyuki Suzuki, Director of Nature Network Co., Ltd.

Seiji Nakao, Director of Nature Network Co., Ltd.

Eiji Mizushima, General Manager of the Japan Science Foundation

Hidetoshi Tashiro, Manager of the Japan Science Foundation

Yuui Suzuki, General Manager of Nippon Express Co., Ltd.

Advisers

Naoki Suzuki, Professor, the Tokyo Jikei University School of Medicine

Haruhiko Akemine, President of Force Corp.

- Experts in various fields will be used in accordance with the progress of the project.

EXPO 2005 Mammoth Excavation and Exhibition Project Schedule

First Stage (August-September 2003): Collecting information, conducting surveys, and negotiating for the purpose of selecting an excavation site

(1) First survey (for a period of one month beginning August 2003)

A) Moscow

- Asking government-related organizations for cooperation and collecting information

B) Area around Khatanga

- Collecting information from related organizations in the area
- Exchanging information with another survey team
- Surveying the area

C) Area around Yakutsk

- Collecting information from related organizations in the area
- Exchanging information with another survey team
- Surveying the area

(2) Second survey (for a period of one month beginning September 2003)

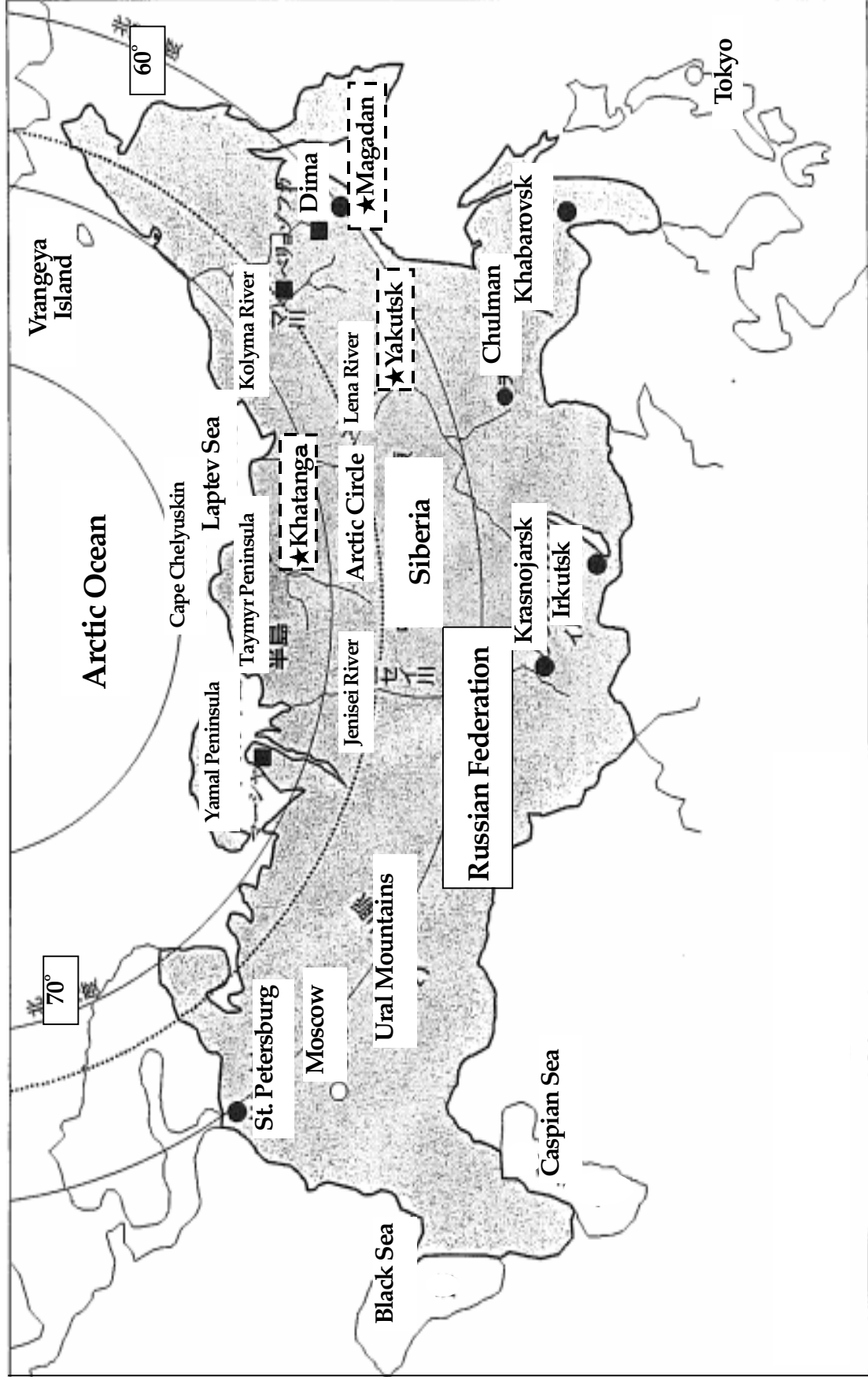
- Deciding on location of surveys based on information from the first survey (If the results of the first survey are not satisfactory, the Magadan area and other locations may be added as candidates.)
- Beginning a test excavation if the information from the first survey has a high degree of accuracy

Second Stage (May-September 2004): Excavation

Third Stage (October 2004-May 2005): Transportation of excavated specimen to EXPO 2005 venue; handling various procedures; construction of exhibition area

Fourth Stage (March-September 2005): Exhibition of specimen at EXPO 2005

Fifth Stage (October 2005 and beyond): Passing it on to the future



■ Mammoth discovery sites

★ Potential excavation sites

Reference: "Journey to Mammoth" Nihon Television